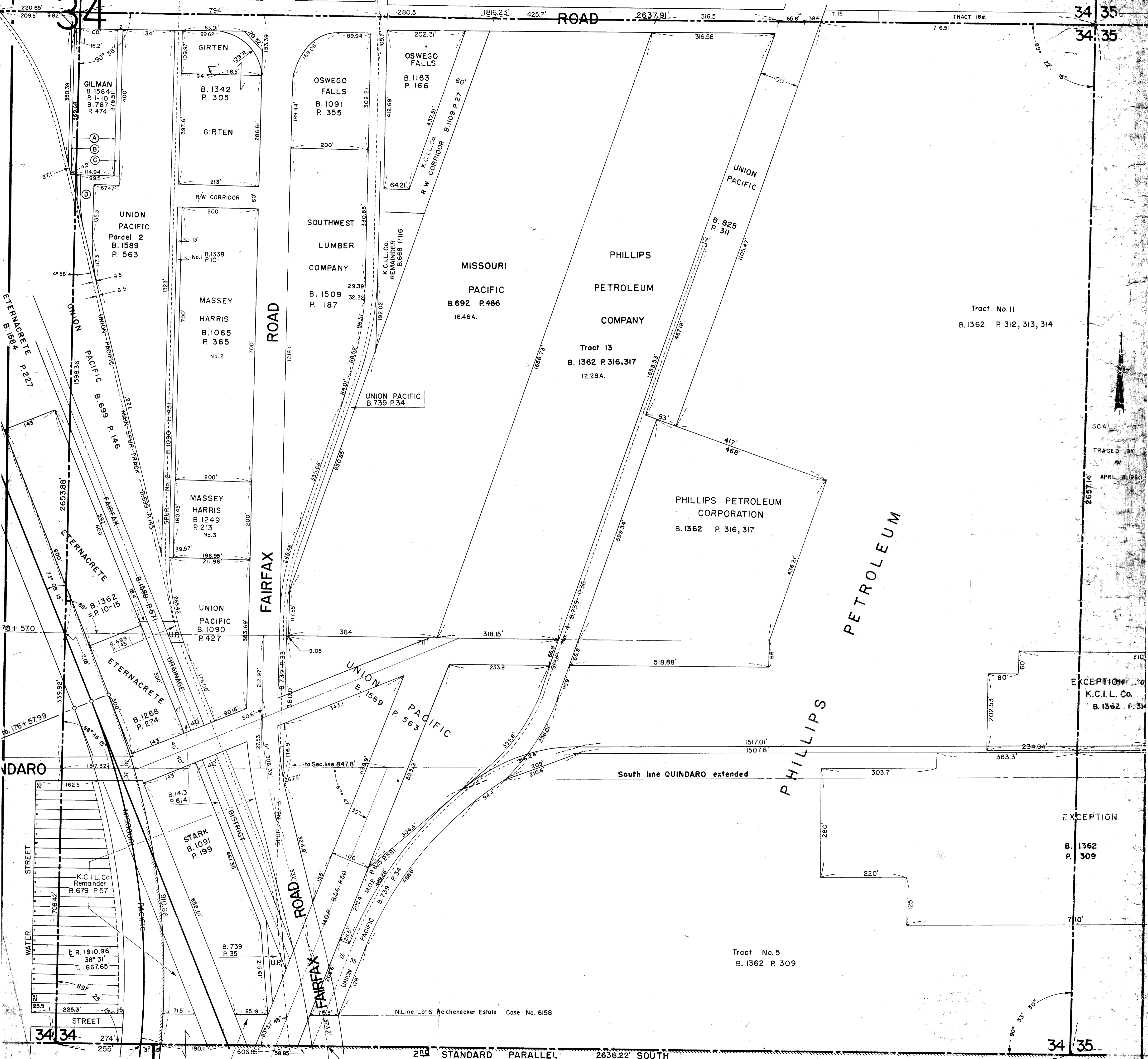


S.E. 1/4 SEC. 34-10S-25E.



34 35
34 35

34 35
2

Tract No. 11
B. 1362 P. 312, 313, 314

Tract 13
B. 1362 P. 316, 317
12.28 A.

Tract No. 5
B. 1362 P. 309

EXCEPTION to
K.C.I.L. Co.
B. 1362 P. 314

EXCEPTION
B. 1362
P. 309

34 35
2

Channing Sta. 167+ 68.0

Tract No. 4
B. 1362 P. 309

TINDALL
B. 1345 P. 201

Intersection of Fairfax & 2nd Std. Parallel South
715' W. to N.S. of Sec. 34 - T.E. Hughes, Book M

SCALE 1" = 40'
TRACED BY
M
APRIL 18, 1960

EXCEPTION to
K.C.I.L. Co.
B. 1362 P. 314

EXCEPTION
B. 1362
P. 309

34 35
2