

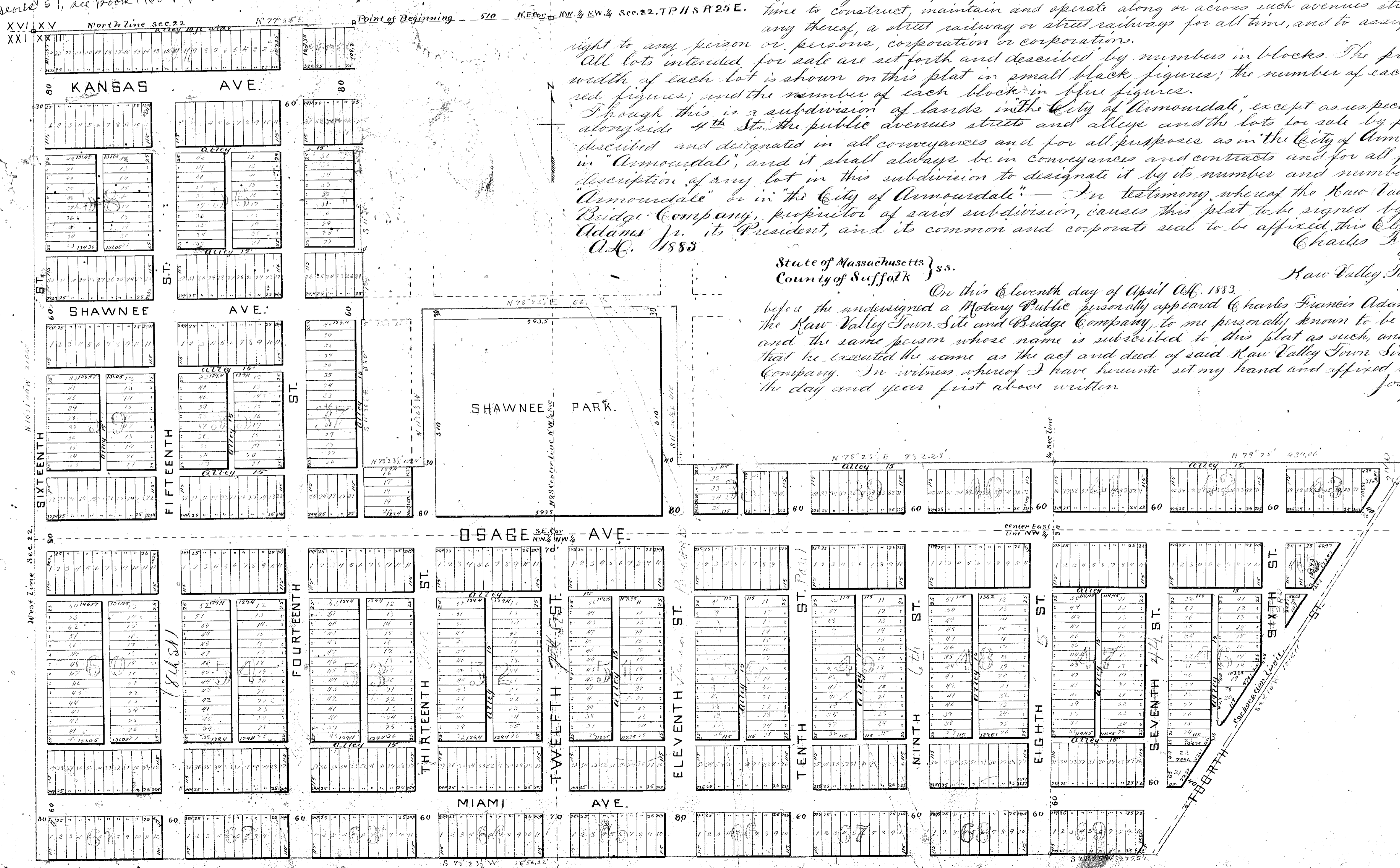
ARMOURDALE

Knight & Bontecou
Civ. Engrs.

For Vacating of alley
between West Line of
Lot 3 and 24. Inclusive in P22 57,
Armourdale Pl. Book 1460 - Page 459
File # 541892

Filed for Record
April 16th 1883 at 4:45 o'clock P.M.
W.H. Bridgens
Register of Deeds.

For Vacating of alley between West line of Lot 2+24 Inclusive
in Book 57, see Book 1460 - Page 385 - File # 541698



This is a subdivision of lands inside the present corporate limits of the City of Armourdale, except a strip 10 feet wide just outside and east thereof, and the lands for sale are described by numbers as lots or blocks in "Armourdale." This subdivision covers the lands included within the broad red lines of this plat. Such lands are situated in Wyandott County, Kansas and are described as follows: Beginning at a point in the north line of Section 22 T.P. 11 S. R. 25 E., Wyandott Co., Kansas, 510 feet West of a monument marking the N.E. Cor. N.W. 1/4 of said section 22, being a corner of the City of Armourdale as fixed by the incorporation thereof in A.C. 1882. Thence S 11° 36' E. 194.23 feet; thence N 78° 23' E. 16.8 feet; thence S 11° 36' E. 130 feet; thence S 78° 23' W. 5 feet; thence S 11° 36' E. 265 feet; thence N 78° 23' E. 5 feet; thence S 11° 36' E. 195 feet; thence S 78° 23' W. 5 feet; thence S 11° 36' E. 350 feet; thence N 78° 23' E. 159.4 feet; thence N 11° 36' W. 10 feet to a stone monument, center of Shawnee Ave.; thence N 78° 23' E. 66.35 feet along center line of Shawnee Ave.; thence S 11° 36' E. 470 feet, along center line of 11th St.; thence N 78° 23' E. 482.25 feet to the East line of 8th St. being the N.E. 1/4 section line; thence N 79° 25' E. 434.16 feet to a point in the center line of 4th St. and 10 feet distant from, easterly at right angle, the corporate limits of Armourdale fixed A.C. 1882. Thence S 32° 16' W. 1214.11 feet, parallel to, and 10 feet easterly from at right angles, said corporate limits; thence S 79° 25' W. 275.52 feet to east line of 8th St. and the S.W. 1/4 section line, section 22. thence S 78° 23' W. 265.62 feet, to the west line of section 22; thence N 105° 14' W. 216.1 feet, along said section line to a stone mark marking the N.W. Cor. of sec. 22. Thence N 77° 52' E. along the North line of sec. 22, 330.44 feet to the point of beginning. - The courses shown hereon are magnetic bearings, the variation being 10° 35'.

The parcels of ground in said subdivision reserved for public purposes are a public park, called Shawnee Park; and avenues, streets and alleys, the names, boundaries, directions, and extent of each of which are set forth on this plat of said subdivision. And such park, avenues, streets and alleys are reserved and dedicated to public purposes as such.

Reserving and excepting however to the proprietor of said subdivision the right at any time to construct, maintain and operate along or across such avenues streets or alleys, or any thereof, a street railway or street railways for all time, and to assign or transfer such right to any person or persons, corporation or corporations.

All lots intended for sale are set forth and described by numbers in blocks. The precise length and width of each lot is shown on this plat in small black figures; the number of each lot is shown in red figures; and the number of each block in blue figures.

Though this is a subdivision of lands in the City of Armourdale, except as respects the 10 foot strip alongside 4th St., the public avenues streets and alleys and the lots for sale by proprietor may be described and designated in all conveyances and for all purposes as in "the City of Armourdale," or simply in "Armourdale," and it shall always be in conveyances and contracts and for all purposes, a good description of any lot in this subdivision to designate it by its number and number of block in "Armourdale" or in "the City of Armourdale." - In testimony whereof the Raw Valley Town Site and Bridge Company, proprietor of said subdivision, causes this plat to be signed by Charles Francis Adams Jr. its President, and its common and corporate seal to be affixed this Eleventh day of April A.C. 1883.

State of Massachusetts } s.s.
County of Suffolk }

On this Eleventh day of April A.C. 1883 before the undersigned a Notary Public personally appeared Charles Francis Adams Jr. President of the Raw Valley Town Site and Bridge Company, to me personally known to be such President, and the same person whose name is subscribed to this plat as such, and duly acknowledged that he executed the same as the act and deed of said Raw Valley Town Site and Bridge Company. In witness whereof I have hereunto set my hand and affixed my official seal, the day and year first above written.

Raw Valley Town Site - Bridge Co.

Joshua W. Davis
Notary Public

