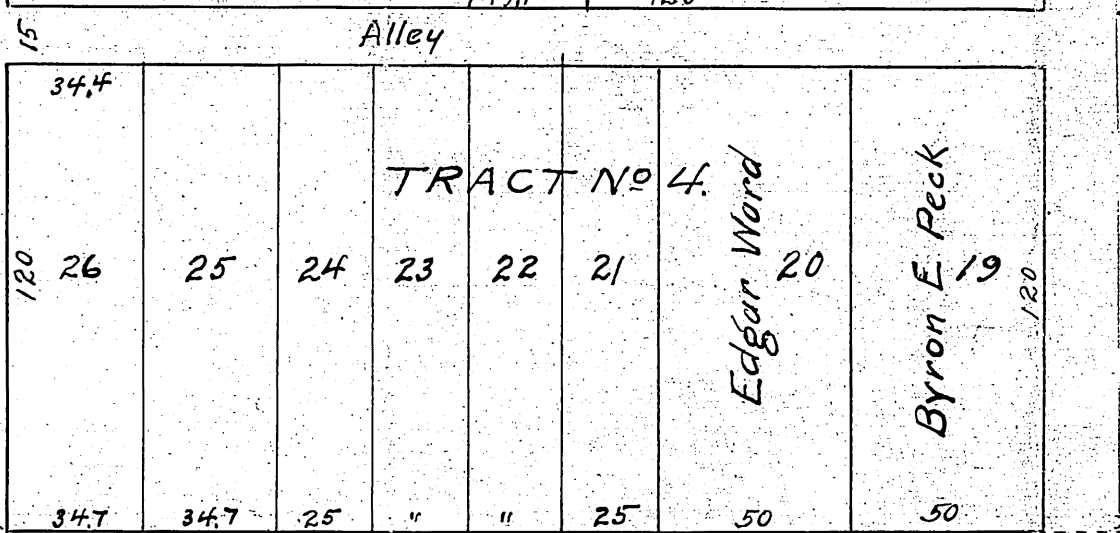
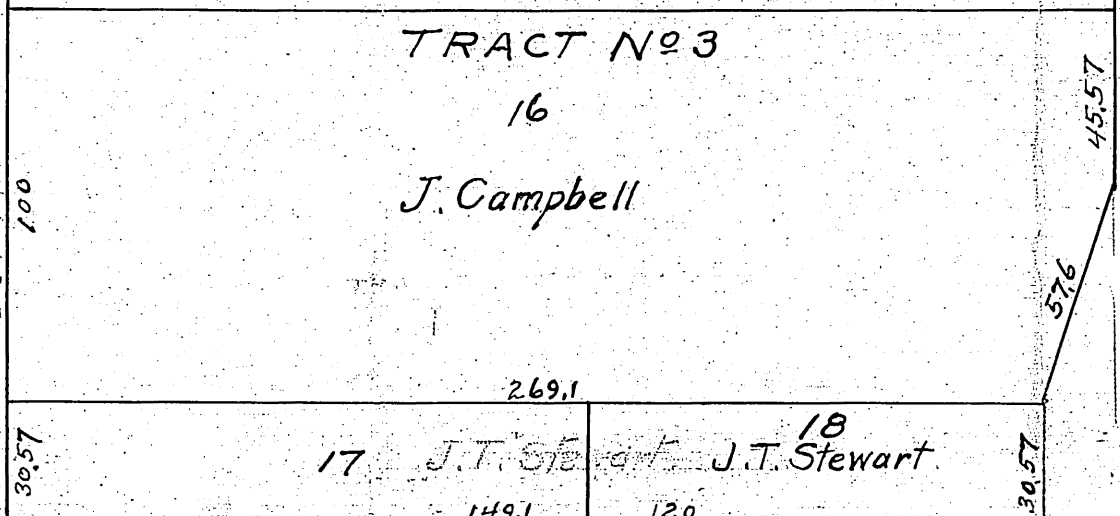
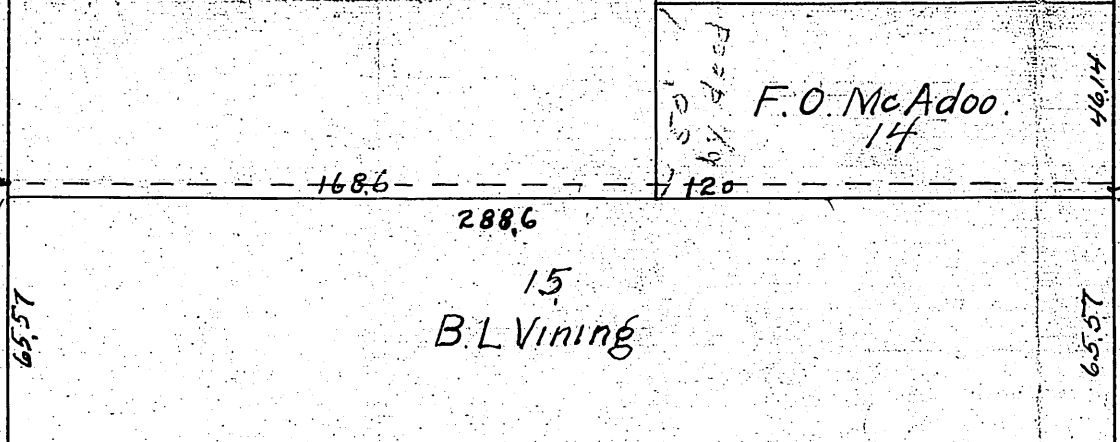
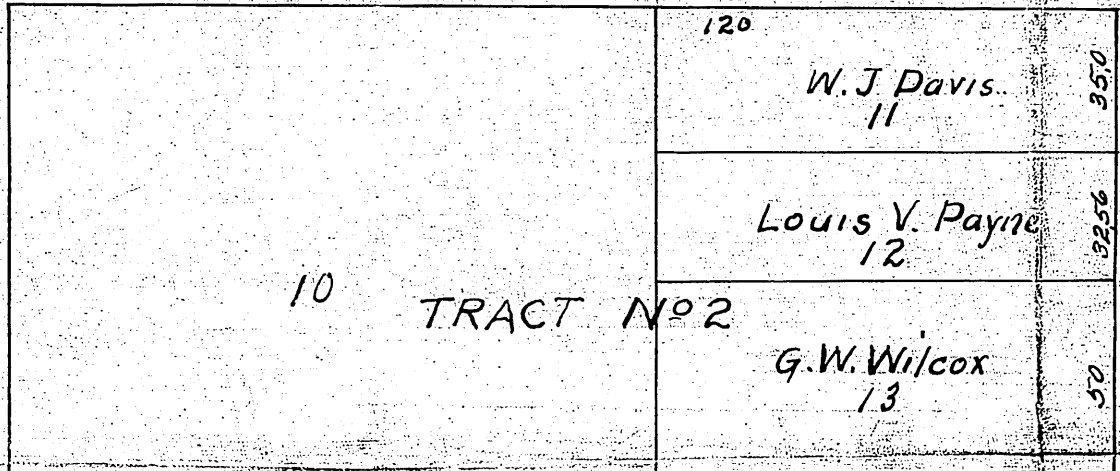
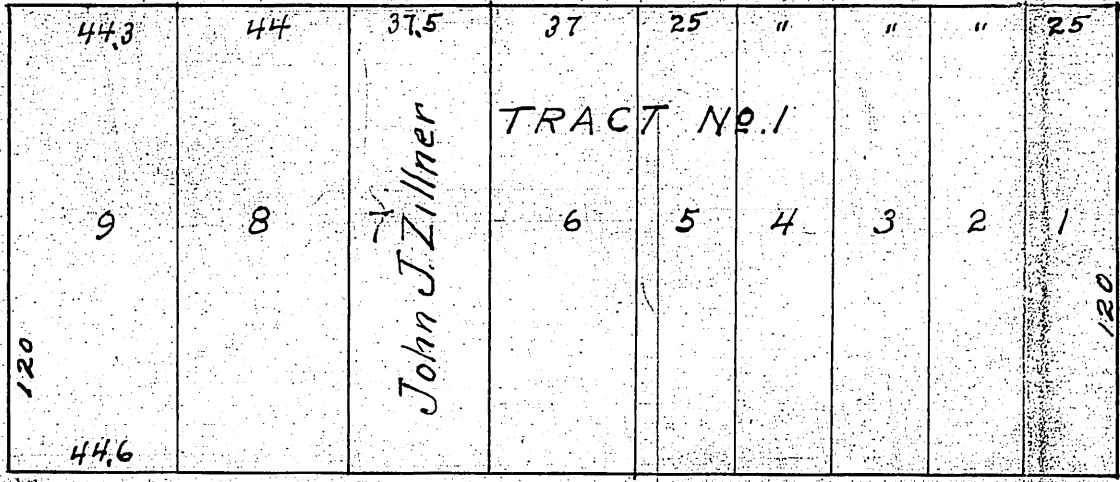


RESURVEY OF
TRACTS Nos 1-2-3 & 4.
OF BOEKE PLACE.
An Addition in Kansas City, Kansas.

Record on the 17
Dec. 1919 P. 9.
2.40
14
21.
W. Yates 9/16/19
By E. Louis Chapin
3.00

STRONG AVE



METROPOLITAN AVE

This Plat of the Resurvey of TRACTS Nos 1, 2, 3 and 4, of BOEKE PLACE comprises that part of BOEKE PLACE lying and situated between 38th St and 39th St and between Strong Ave and Metropolitan Avenue, in Argentine, now a part of Kansas City, Kansas.

DEDICATION.

I, Wm. Beggs, County Clerk in and for Wyandotte County, Kansas hereby certify that I had the above Tracts surveyed and subdivided into Lots as indicated on the above plat, and I hereby dedicate said subdivision for assessment purposes and designate said plat as the RESURVEY OF TRACTS 1, 2, 3 and 4, BOEKE PLACE.

I further certify that said tracts of Land have been platted under my direction because the owners thereof have failed to make and file a plat as required by law, and that I have caused the same to be made and platted pursuant to the provisions of Chapter 247 of the Laws of 1909.

I further certify that the Streets shown hereon are now in actual use for public travel.

Witness my hand and official seal this day of December, A.D. 1919.

William Beggs
County Clerk of
Wyandotte County, Ks.

STATE OF KANSAS }
COUNTY OF WYANDOTTE } ss.

Be it remembered that on this day of December, A.D. 1919, before me the undersigned, a Notary Public, in and for the above named county and state, came Wm Beggs, County Clerk in and for Wyandotte County, Kansas, who is personally known to me to be the same person who executed the foregoing Instrument and duly acknowledged the execution of the same.

In witness whereof I have hereunto subscribed my name and affixed my official seal the day and year last above written.

Geo. E. Mueller
Notary Public

My Commission Expires Jan 2, 1922.