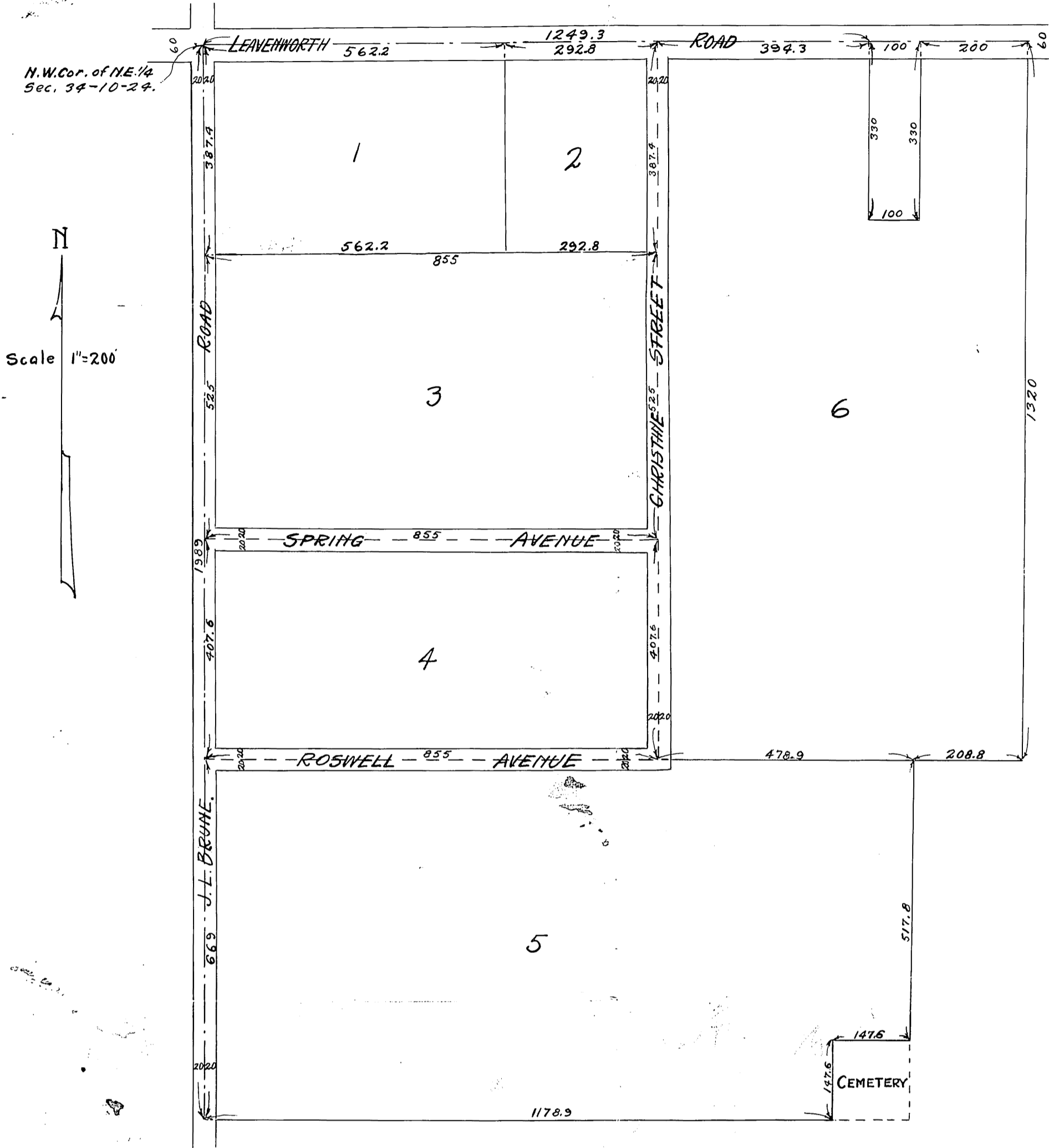


# SUBDIVISION OF THE CHRISTINE BRUNE ESTATE

Surveyed by - *P.A. Williamson*  
County Surveyor



This plot of "Subdivision of the Christine Brune Estate" includes land in Wyandotte County, Kansas described as follows - Beginning at the Northwest corner of the Northeast 1/4 of Section 34-T.10S.-R.24E. Thence South 1989 feet; thence East 1178.9 feet; thence North 147.6 feet; thence East 147.6 feet; thence North 517.8 feet; thence East 208.8 feet; thence North 1320 feet; thence West 200 feet; thence South 330 feet; thence West 100 feet; thence North 330 feet; thence West 1249.3 feet to the point of beginning.

The tracts hereon shown are described by numbers as lots in "Subdivision of the Christine Brune Estate" the dimensions of which are shown on this plot.

The parcels intended for public use are Streets the names, extent and direction of which are hereon shown and they are hereby dedicated to the public for use as such.

In Testimony Whereof we, the undersigned owners, of the above described tract, have hereunto set our hands and seals this 10<sup>th</sup> day of July - A.D. 1931

<i>Lizzie C. Brune</i> Seal	<i>Edward G. Brune</i> Seal	<i>Lewis T. Klamm</i> Seal
<i>Willis E. Brune</i> Seal	<i>Florence J. W. Klamm</i> Seal	<i>Ann Elizabeth Klamm</i> Seal
<i>Hazel Brune</i> Seal	<i>John H. Brune</i> Seal	<i>Fred E. Klamm</i> Seal
<i>Elmer H. Brune</i> Seal	<i>Margaret M. Brune</i> Seal	<i>Nell E. Klamm</i> Seal
<i>Mabel A. Brune</i> Seal	<i>Christine M. Brune</i> Seal	<i>Walter O. Klamm</i> Seal
<i>Harold W. Brune</i> Seal	<i>Edward G. Brune</i> Seal	<i>Nellie A. Klamm</i> Seal
<i>Louise Brune</i> Seal	<i>John L. Brune</i> Seal	<i>Emily J. Winters</i> Seal
<i>William T. H. Brune</i> Seal	<i>David P. Klamm</i> Seal	<i>Delmar Winters</i> Seal
<i>Gertrude Brune</i> Seal	<i>Samuel Klamm</i> Seal	

STATE OF KANSAS }  
COUNTY OF WYANDOTTE } s.s.

Be it remembered that on this 10<sup>th</sup> day of July - A.D. 1931 before me, a Notary Public in and for the above named County and State came Lizzie C. Brune, a widow, Willis E. Brune and Hazel Brune, his wife, Elmer H. Brune and Mabel A. Brune, his wife, Louise Brune, a single woman, Harold W. Brune, a single man, William T. H. Brune and Gertrude Brune, his wife, Edward G. Brune and Florence Z. W. Brune, his wife, ~~Emily Winters and Delmar Winters, her husband~~ John L. Brune and Margaretta L. Brune, his wife, Christine M. Studt and Edward Studt, her husband, David P. Klamm and Edna V. Klamm, his wife, Lewis T. Klamm and Ann Elizabeth Klamm, his wife, Fred E. Klamm and Nell E. Klamm, his wife, Walter O. Klamm and Nellie A. Klamm, his wife, and Emily J. Brune a single woman who are personally known to me to be the same persons who executed the foregoing instrument and duly acknowledged the execution of the same as their own free act and deed.

In Witness Whereof I have hereunto set my hand and seal the day and year last above written.  
My Commission Expires - *July 25 - 1933*

STATE OF ARIZONA }  
COUNTY OF GILA } s.s.

Be it remembered that on this 17<sup>th</sup> day of July - A.D. 1931 before me a Notary Public in and for the above named County and State came Emily Winters and Delmar Winters, her husband who are personally known to me to be the same persons who executed the foregoing instrument and duly acknowledged the execution of the same as their own free act and deed.

In Witness Whereof I have hereunto set my hand and seal the day and year last above written.  
My Commission Expires - *3-15-33*