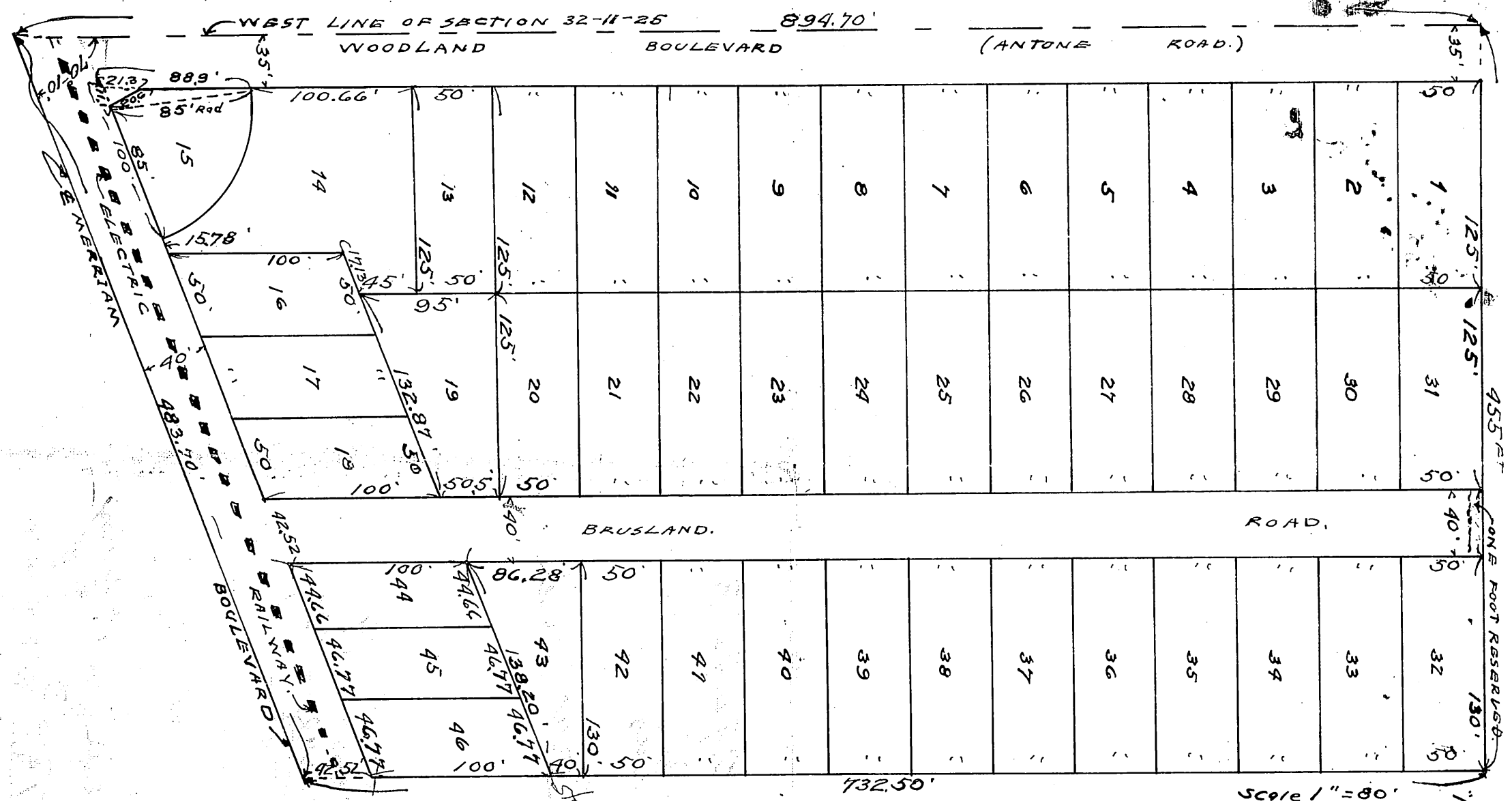


**"BRUSLAND"**  
 A SUBDIVISION OF LAND IN WYANDOTTE  
 COUNTY KANSAS.



"DESCRIPTION."

THIS PLAT OF BRUSLAND SHOWS THE THE SUBDIVISION OF TRACT N° 1 IN THE "BRUS FARM" AS SHOWN ON THE RECORDS OF THE REGISTER OF DEEDS IN WYANDOTTE COUNTY KANSAS.

"DEDICATION"

THE PARCELS OF LAND INTENDED FOR SALE ARE LOTS NUMBERED CONSECUTIVELY FROM ONE TO FORTY SIX INCLUSIVE. THE TRUE DIMENSIONS OF EACH LOT ARE SET FORTH ON THIS PLAT. THESE PARCELS OF LAND SHALL HEREAFTER BE KNOWN AS LOTS IN "BRUSLAND". THE LANDS INTENDED FOR PUBLIC USE, ARE ROADS AS SHOWN HEREON AND THEY ARE HERE BY DEDICATED TO THE PUBLIC FOR TRAVEL. IN TESTIMONY WHEREOF WE THE UNDER SIGNED OWNERS OF THE ABOVE DESCRIBED LAND HAVE HEREUNTO SET OUR HANDS THIS 3rd DAY OF JUNE, A.D. 1929,

STATE OF KANSAS }  
 COUNTY OF WYANDOTTE } SS  
 BE IT REMEMBERED THAT ON THIS 3rd DAY OF JUNE, A.D. 1929, BEFORE ME THE UNDER SIGNED A NOTARY PUBLIC IN AND FOR THE COUNTY AND STATE AFORESAID CAME LEON BRUS, AND LOIS BRUS, HIS WIFE WHO ARE PERSONALLY KNOWN TO ME TO BE THE SAME PERSONS WHO EXECUTED THE FOREGOING INSTRUMENT OF WRITING, AND DULY ACKNOWLEDGED THE EXECUTION OF THE SAME AS THEIR OWN FREE ACT AND DEED. IN WITNESS WHEREOF I HAVE HEREUNTO SET MY HAND AND AFFIXED MY NOTARIAL SEAL THE DAY AND YEAR LAST ABOVE WRITTEN.  
 MY COMMISSION EXPIRES. July 2, 1930,

Leon Brus      SEAL, Lois Brus      SEAL  
 Notary Public