

# Chelsea Annex

A SUBDIVISION OF A PART OF  
SECTION 5, TOWNSHIP 11, RANGE 25

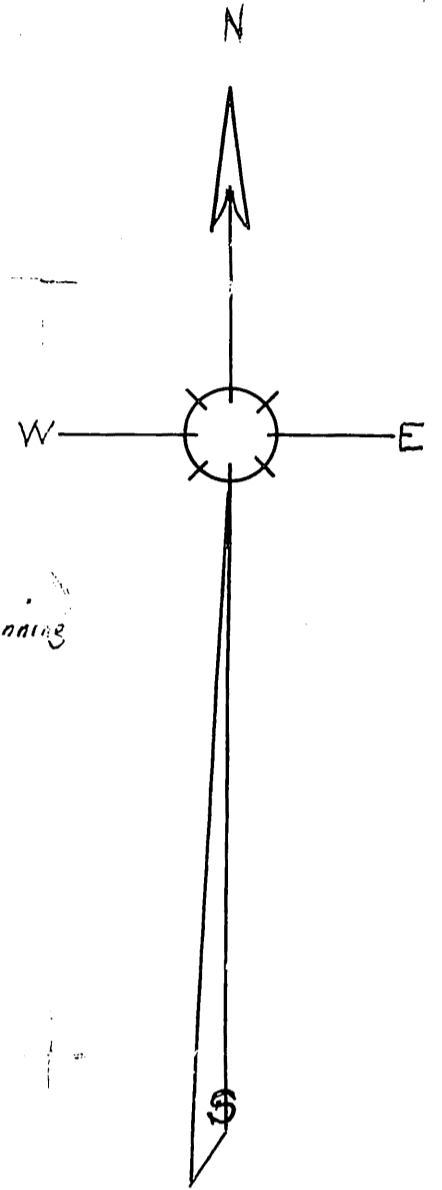
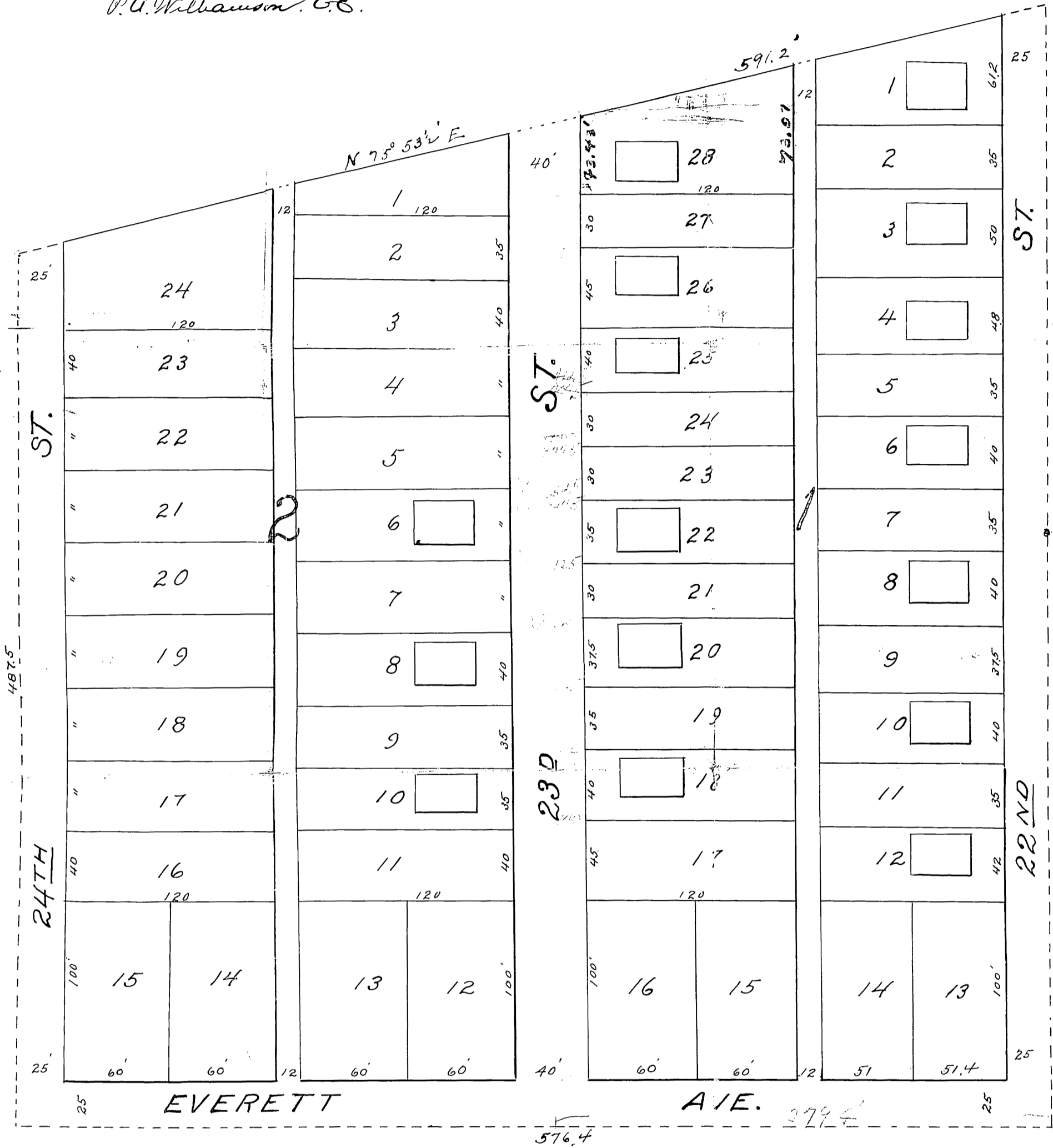
IN  
WYANDOTTE COUNTY

KANSAS

SCALE 1 IN. = 60 FT.

158878  
Filed May 3-1915  
Plat 12-35

Surveyed by  
P. A. Williamson, C.E.



### Description

This plat of CHELSEA ANNEX includes land in Wyandotte County, Kansas, described as follows:

Beginning at the northeast corner of the S.W. 1/4 of the S.E. 1/4 of Section 5, T. 11 S. - R. 25 E. thence south 330 ft.; thence west 576.4 ft. thence north 487.5 ft.; thence N. 75° 53' 1/2\"/>

### Dedication

The lands intended for sale are designated by numbers as lots and blocks in CHELSEA ANNEX, the lots being marked in small black-figures and the blocks in large blue figures. The lands reserved for public use are streets and alleys, the names, extent and direction of which are shown on this plat; and they are hereby dedicated for public use as such

In testimony whereof the undersigned owners of the above described lands have hereunto set their hands and seals this \_\_\_\_\_ day of \_\_\_\_\_ A.D. 1915.

State of Kansas }  
County of Wyandotte } ss.

Before me, the undersigned, a notary public in and for the State and county aforesaid, came Hanford L. Kerr and Nettie Kerr, his wife, to me personally known to be the persons who executed the within instrument, and acknowledged the same to be their free act and deed.

In witness whereof, I have hereunto set my hand and official seal this 16<sup>th</sup> day of April, A.D. 1915.

Signed \_\_\_\_\_

Notary Public.

My commission expires \_\_\_\_\_

Signed, Howard L. Kerr  
Nettie Kerr

I, Howard Payne, city clerk of the city of Kansas City, Ks, hereby certify that the above plat was approved by the mayor and the board of city commissioners, the 27<sup>th</sup> day of April, 1915, A.D. 1915.

Signed, Howard Payne  
City Clerk.