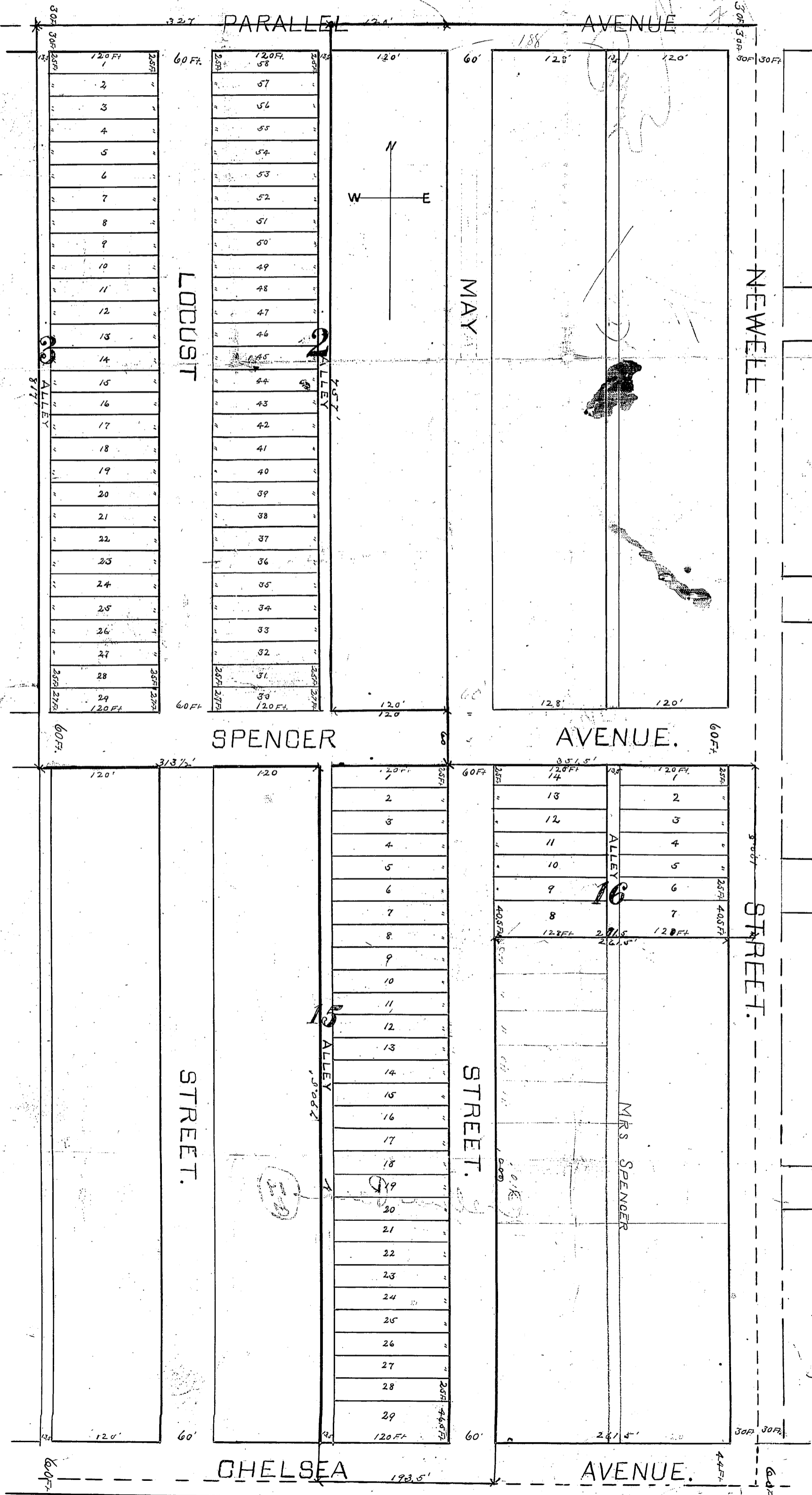


# CHELSEA PARK

WYANDOTTE COUNTY KANSAS.

Scale - 1 inch = 100 feet  
41574

J. H. LASLEY  
COUNTY SURVEYOR



### Description

This Plat of "Chelsea ~~Place~~ <sup>Park</sup>" covers land in Wyandotte County Kansas described as follows to wit:

Commencing at a point on Second Standard Parallel, where West line of May Street in Chelsea Park, extended, intersects said Parallel line, thence West 327 feet, thence South 817 feet to South line of Spencer Avenue, extended, thence East 313 1/2 feet, thence South 790 1/2 feet, thence East 193 1/2 feet, thence North 600 feet, thence East 290 feet to West line of Chelsea Place, the same being the Center line of Newell St. thence North 190 1/2 feet to South line of Spencer Avenue, extended, thence West along said South line 351 1/2 feet to West line of May Street, thence North 60 feet, thence West 120 feet, thence North 857 feet to place of beginning.

### Dedication

The lands reserved for sale are described by numbers as Blocks and Lots in "Chelsea Park", the Blocks being numbered with large blue figures and the Lots with small black figures. The parcels of ground in the subdivision reserved for public use as streets, avenues and alleys, the names extent and direction of all such streets, avenues and alleys are designated on this Plat and are reserved for public purposes as such.

All lots intended for sale are set forth and described by numbers in blocks. The precise length and width of each lot in feet and decimal portions thereof is set forth on this Plat in small black figures.

In testimony whereof we have hereunto set our hands and affixed our seals this 5th day of Sept. A.D. 1888.

S. F. Mather  
M. A. Mather by her Attorney  
in fact S. F. Mather

State of Kansas }  
County of Wyandotte }

BE it remembered that on this 5th day of September A.D. 1888 before me, the undersigned a Notary Public in and for said County and State, came S. F. Mather and Mary Ann Mather his wife who are personally known to me to be the same persons who executed the foregoing instrument of writing and acknowledged that they executed the same as their own act and deed. For the uses and purposes therein mentioned. ~~W. A. Lovelace~~ <sup>W. A. Lovelace</sup> Notary Public in fact. In witness whereof I have hereunto set my hand and affixed my Notarial Seal the day and year last above written.

My Commission and Term of Office expires on the 21st day of Dec. 1888.

State of Kansas }  
County of Wyandotte }  
Filed for Record  
Sept 6, 1888 at 10:20 AM

W. A. Lovelace  
Register of Deeds  
By E. D. Blew Deputy