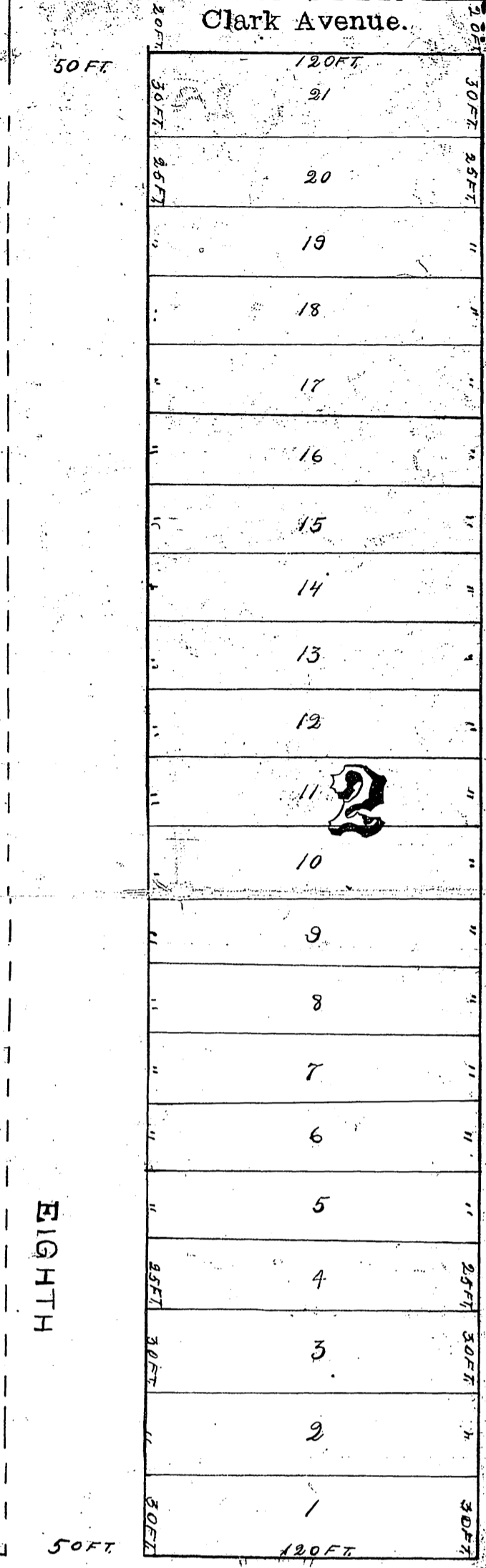


Cobb's Annex

SCALE ONE INCH = 50 FEET.

J. H. Gasley,
County Surveyor.



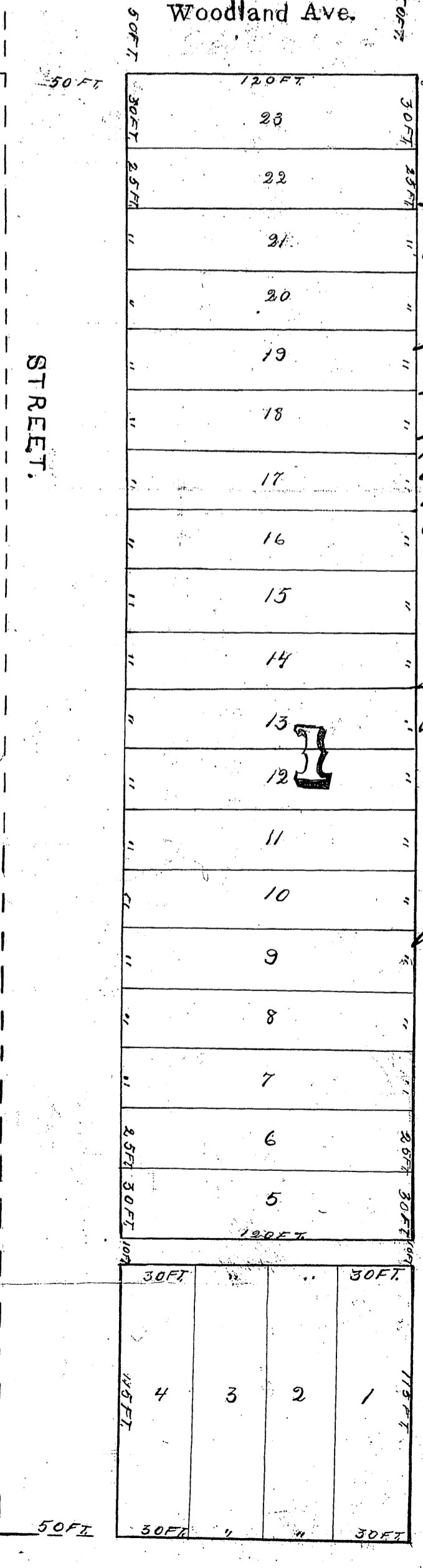
This Plat of Cobb's Annex covers land in Wyandotte County Kansas described as follows, to wit: Beginning at a point 418 feet North a 581.5 feet East of the centre to Section 33 Town 10 Range 25. Thence 170 feet to West line of Cobb Heights as per Record Thence South 1220 feet to Cleveland Ave. Thence West 170 feet Thence North 1220 feet to Beginning.

The lands reserved for sale are described by numbers as Blocks, and lots in Cobb's Annex, the blocks being numbered with large blue figures, and the lots with small black figures. The parcels of ground in the subdivision reserved for public use are Streets, Avenues, and Alleys. The names, extent, and direction of all such Streets, Avenues, and Alleys are designated on Plat and are reserved for Public Purpose as such.

All lots intended for sale are set forth and described by numbers in Blocks. The precise length and width of each lot in feet and decimal portions thereof is set forth on this Plat in small black figures.

In testimony whereof we have hereunto affixed our names and seal this 3rd day of Sept. A. D. 1887

Lewis L. Cobb
Alfred H. Cobb.



State of Kansas } ss.
County of Wyandotte }

Be it remembered, that on this 3rd day of Sept. A. D. 1887. before me the undersigned a Notary Public in and for the county and State aforesaid came Lewis L. Cobb and Alfred H. Cobb, her husband who are personally known to me to be the same persons who executed the foregoing instrument of writing and duly acknowledge the execution of the same.

In witness whereof, I have hereunto set my hand and affixed my official seal the day and year last above written.

Charles P. Craig
Notary Public

My Commission Expires May 26th 1891.

State of Kansas } ss.
Wyandotte County }
Filed for record Sept 5th 1887.
M. H. Bridgman
Register of Deeds

Recorded Plat Book 3
Page 31.