

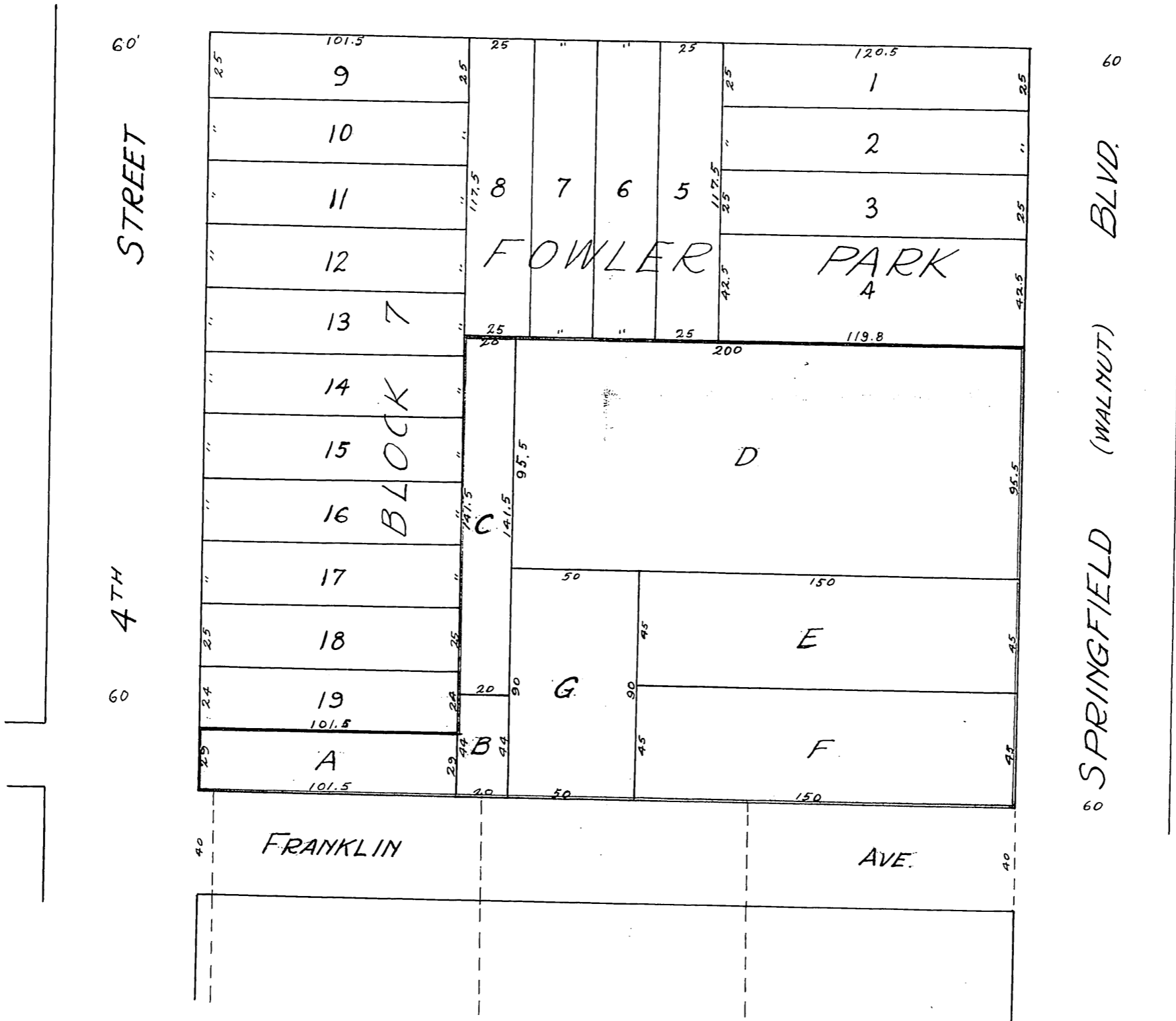
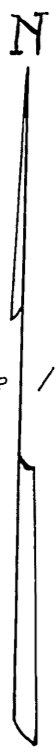
# Crane's Subdivision

A SUBDIVISION OF LAND IN  
WYANDOTTE COUNTY KANSAS

County Surveyors Office

County Surveyor.

Scale 1" = 50'



### DESCRIPTION

This plat of Crane's Subdivision contains land in Wyandotte County, Kansas described as follows - Beginning at the S. W. corner of Lot 8 Block 7 Fowler Park; thence east to the west line of Springfield Boulevard, formerly Walnut Street; thence south along the west line of Springfield Blvd. to the north line of Franklin Avenue; thence west along the north line of Franklin Avenue to the east line of Fourth Street; thence north along the east line of Fourth Street to the S. W. corner of Lot 19 Block 7 Fowler Park; thence east to the S. E. corner of said lot 19; thence north to the point of beginning.

### DEDICATION

I, William Beggs - County Clerk of Wyandotte County Kansas, hereby certify that I have had the above tracts of land surveyed and have grouped and platted them as indicated on the within plat, and I hereby dedicate said subdivision for Assessment purposes and designate said group of lands as "Crane's Subdivision."

I further certify that I have had said tracts surveyed and platted because of the failure of the owners thereof to make and file a plat as required by law, and that I have caused the same to be made and platted pursuant to the provisions of Chapter 247 of the laws of 1909, I further certify that the streets indicated on this plat are in actual use by the public for public travel. Witness my hand and seal of my office affixed this 24<sup>th</sup> day of October A.D. 1928

*William Beggs*  
County Clerk

STATE OF KANSAS }  
COUNTY OF WYANDOTTE } S.S.

Be it remembered that on this 24<sup>th</sup> day of Oct A.D. 1928, before me a Notary Public in and for the above named County and State, came William Beggs, County Clerk of said County, who is personally known to me to be the same person who executed the foregoing instrument and duly acknowledged the execution of the same.

In Witness Whereof I have hereunto subscribed my name and affixed my Notarial Seal the day and year last above written.

My Commission Expires Sept 10 1929

*Joseph H. Lynch*  
Notary Public