

CRESTMORE DOWNS

NW CORNER
NE 1/4 - SW 1/4
SEC. 9-11-24

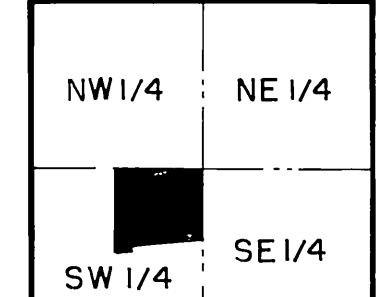
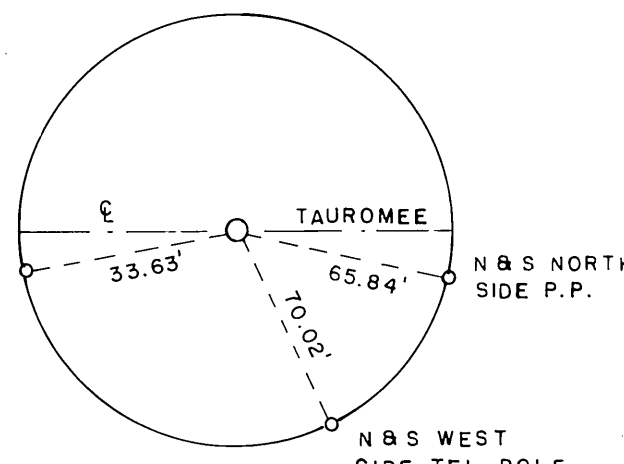
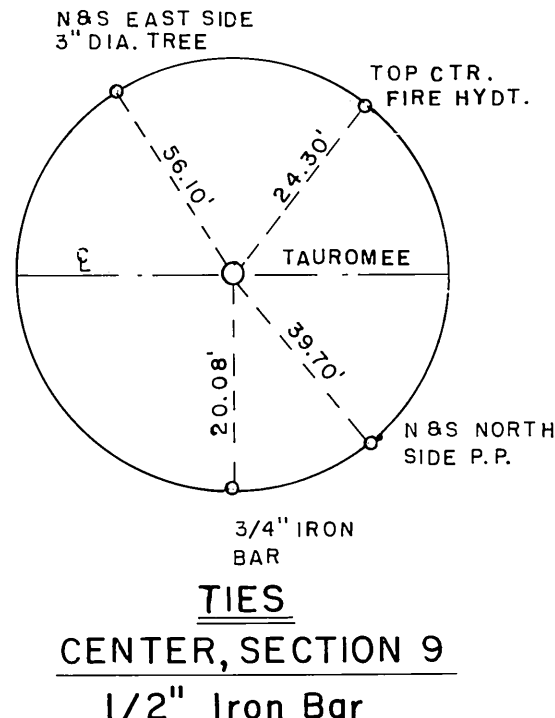
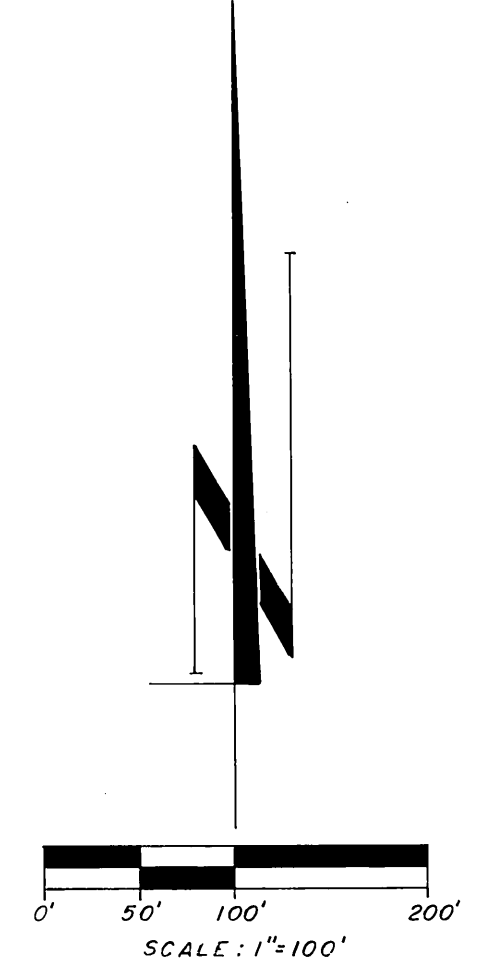
NORTH LINE SOUTHWEST QUARTER SEC. 9, TWP. 11, RANG. 24
Touree Avenue S 88° 20' 35" W 1326.72'

CENTER
SEC. 9-11-24



TRACT NO. 279 d

TRACT NO. 279 03



Sec. 9-11-24
LOCATION MAP



DESCRIPTION

A TRACT OF LAND IN THE SOUTHWEST QUARTER OF SECTION 9, TOWNSHIP 11, RANGE 24, KANSAS CITY, WYANDOTTE COUNTY, KANSAS, BEING MORE ACCURATELY DESCRIBED AS FOLLOWS: BEGINNING AT THE CENTER OF SAID SECTION 9; THENCE SOUTH 88° 20' 35" WEST ALONG THE NORTH LINE OF THE SOUTHWEST QUARTER OF SAID SECTION 9, 1326.72 FEET TO THE NORTHWEST CORNER OF THE NORTHWEST QUARTER OF THE SOUTHWEST QUARTER OF SAID SECTION 9; THENCE SOUTH 00° 19' 44" WEST ALONG THE WEST LINE OF THE NORTH-EAST QUARTER OF THE SOUTHWEST QUARTER, 1296.88 FEET TO A POINT ON THE NORTHERLY RIGHT-OF-WAY LINE OF THE KANSAS TURNPIKE, AS NOW LOCATED; THENCE IN A NORTHEASTERLY DIRECTION ALONG SAID NORTHERLY RIGHT-OF-WAY LINE ON A CURVE TO THE LEFT HAVING A RADIUS OF 11309.16 FEET AN ARC DISTANCE OF 74.65 FEET BY SURVEY (76.62 FEET BY DEED); THENCE NORTH 06° 25' 38" WEST, ALONG SAID NORTHERLY RIGHT-OF-WAY LINE AND RADIAL TO THE NEXT DESCRIBED COURSE, 50.00 FEET; THENCE CONTINUING NORTHEASTERLY ALONG SAID NORTHERLY RIGHT-OF-WAY LINE ON A CURVE TO THE LEFT, HAVING A RADIUS OF 11259.16 FEET, AN ARC DISTANCE OF 734.02 FEET BY SURVEY (733.99 BY DEED); THENCE NORTH 79° 50' 13" EAST, TANGENT TO THE LAST DESCRIBED CURVE, 298.61 FEET TO A POINT OF CURVATURE; THENCE ALONG A CURVE TO THE RIGHT HAVING A RADIUS OF 11659.16 FEET, AN ARC DISTANCE OF 221.01 FEET; THENCE NORTH 00° 39' 15" EAST ALONG A LINE 16.50 FEET FROM AND PARALLEL TO THE EAST LINE OF THE SOUTHWEST QUARTER OF SAID SECTION 9, 613.71 FEET; THENCE SOUTH 89° 26' 45" EAST, 16.50 FEET TO A POINT ON THE EAST LINE OF THE SOUTHWEST QUARTER OF SAID SECTION 9; THENCE NORTH 00° 39' 15" EAST ALONG THE EAST LINE OF THE SOUTHWEST QUARTER OF SAID SECTION 9, 468.42 FEET TO THE POINT OF BEGINNING.

DEDICATION

THE UNDERSIGNED PROPRIETOR OF THE HEREOF DESCRIBED TRACT OF LAND HAS CAUSED THE SAME TO BE SUBDIVIDED IN THE MANNER AS SHOWN ON THE ACCOMPANYING PLAT WHICH SUBDIVISION AND PLAT SHALL HEREAFTER BE KNOWN AS "CRESTMORE DOWNS"

THE LANDS INTENDED FOR SALE ARE DESCRIBED BY AND AS LOTS THE DIMENSIONS OF WHICH ARE SHOWN THEREON WITH CERTAIN DECLARATION OF RESTRICTIONS FILED FOR RECORD ON November 8, 1977, IN THE OFFICE OF THE REGISTER OF DEEDS OF WYANDOTTE COUNTY, KANSAS, AS DOCUMENT NO. 854154 IN BOOK 2594, AT PAGE 560, ARE HEREBY INCORPORATED HEREIN BY REFERENCE AS IF FULLY SET FORTH HEREIN AND ARE MADE APPLICABLE TO ALL THE REAL PROPERTY INCLUDED IN THIS PLAT. THAT PORTION RESERVED FOR PUBLIC USE AS ROADS THE EXTENT AND DIRECTION OF WHICH ARE SHOWN ON THIS PLAT, AND ALL UTILITIES AND DRAINAGE EASEMENTS OVER THE SIDE AND REAR FIVE (5) FEET OF EACH LOT AND SIMILAR EASEMENTS THE DIMENSIONS OF WHICH ARE SHOWN ARE HEREBY DEDICATED TO PUBLIC USE FOREVER.

IN TESTIMONY WHEREOF, CRESTMORE DOWNS, INC., HAS BY AUTHORITY OF ITS BOARD OF DIRECTORS CAUSED THIS INSTRUMENT TO BE SIGNED BY ITS PRESIDENT, TO BE ATTESTED BY ITS SECRETARY AND ITS CORPORATE SEAL TO BE AFFIXED THIS Eighth DAY OF November, 1977.

ATTEST Dale W. Boyd SECRETARY Joseph A. Maderak PRESIDENT

STATE OF KANSAS
COUNTY OF WYANDOTTE

BE IT REMEMBERED, THAT ON THIS Eighth DAY OF November, 1977, BEFORE ME, THE UNDERSIGNED NOTARY PUBLIC, CAME JOSEPH MADERAK, PRESIDENT OF CRESTMORE DOWNS, INC., A CORPORATION AND DALE W. BOYD, SECRETARY OF SAID CORPORATION, WHO ARE PERSONALLY KNOWN TO ME TO BE SUCH OFFICERS AND WHO ARE PERSONALLY KNOWN TO ME TO BE THE SAME PERSONS WHO EXECUTED AS OFFICERS, THE WITHIN INSTRUMENT ON BEHALF OF SAID CORPORATION, AND SUCH PERSONS DULY ACKNOWLEDGED THE EXECUTION OF THE SAME TO BE THE ACT AND DEED OF SAID CORPORATION.

IN WITNESS WHEREOF, I HAVE HEREUNTO SET MY HAND AND AFFIXED MY NOTARIAL SEAL AT MY OFFICE IN WYANDOTTE COUNTY THE DAY AND YEAR LAST ABOVE WRITTEN.

MY COMMISSION EXPIRES September 22, 1979

Mary Ann David
NOTARY PUBLIC

APPROVED BY KANSAS CITY, KANSAS PLANNING COMMISSION

Edward J. Johnson
CHAIRMAN

ATTEST Walter A. Pitzer
SECRETARY

APPROVED BY KANSAS CITY, KANSAS CITY ENGINEER

Walter A. Pitzer
ACTING CITY ENGINEER

APPROVED BY KANSAS CITY, KANSAS BOARD OF CITY COMMISSIONERS

John C. Deane
MAYOR

ATTEST Walter A. Pitzer
SECRETARY

THIS IS TO CERTIFY THAT I HAVE MADE A TRUE AND ACCURATE SURVEY OF THE ABOVE DESCRIBED TRACT OF LAND AND THE DETAILS OF THIS PLAT TO BE CORRECT.

Sam G. Haldiman
KANSAS LAND SURVEYOR NO. LS-617

CRESTMORE DOWNS
BOOK 33 PAGE 45

TALIAFERRO AND BROWNE
Consulting Engineers, P.A.
KANSAS CITY, KANSAS

NO.	CHORD BRG.	CHORD RADIUS	CEN. ANG.	ARC	TAN.	
1	N 89° 45' 41" E	74.65	11309.16'	00° 22' 41"	74.65'	37.38'
2	N 81° 42' 17" E	733.89	11259.16'	03° 41' 07"	734.02'	367.14'
3	N 80° 26' 45" E	221.01	11659.16'	02° 01' 10"	221.01'	110.51'
4	N 79° 50' 13" E	298.61	200.00'	90° 00' 00"	31.42'	20.00'
5	N 79° 50' 13" E	298.61	200.00'	90° 00' 00"	31.42'	20.00'
6	N 79° 50' 13" E	298.61	200.00'	90° 00' 00"	31.42'	20.00'
7	N 79° 50' 13" E	298.61	200.00'	90° 00' 00"	31.42'	20.00'
8	N 79° 50' 13" E	298.61	200.00'	90° 00' 00"	31.42'	20.00'
9	N 79° 50' 13" E	298.61	200.00'	90° 00' 00"	31.42'	20.00'
10	N 79° 50' 13" E	298.61	200.00'	90° 00' 00"	31.42'	20.00'
11	N 79° 50' 13" E	298.61	200.00'	90° 00' 00"	31.42'	20.00'
12	N 79° 50' 13" E	298.61	200.00'	90° 00' 00"	31.42'	20.00'
13	N 79° 50' 13" E	298.61	200.00'	90° 00' 00"	31.42'	20.00'
14	N 79° 50' 13" E	298.61	200.00'	90° 00' 00"	31.42'	20.00'
15	N 79° 50' 13" E	298.61	200.00'	90° 00' 00"	31.42'	20.00'
16	N 79° 50' 13" E	298.61	200.00'	90° 00' 00"	31.42'	20.00'
17	N 79° 50' 13" E	298.61	200.00'	90° 00' 00"	31.42'	20.00'
18	N 79° 50' 13" E	298.61	200.00'	90° 00' 00"	31.42'	20.00'
19	N 79° 50' 13" E	298.61	200.00'	90° 00' 00"	31.42'	20.00'
20	N 79° 50' 13" E	298.61	200.00'	90° 00' 00"	31.42'	20.00'
21	N 79° 50' 13" E	298.61	200.00'	90° 00' 00"	31.42'	20.00'
22	N 79° 50' 13" E	298.61	200.00'	90° 00' 00"	31.42'	20.00'
23	N 79° 50' 13" E	298.61	200.00'	90° 00' 00"	31.42'	20.00'
24	N 79° 50' 13" E	298.61	200.00'	90° 00' 00"	31.42'	20.00'
25	N 79° 50' 13" E	298.61	200.00'	90° 00' 00"	31.42'	20.00'
26	N 79° 50' 13" E	298.61	200.00'	90° 00' 00"	31.42'	20.00'
27	N 79° 50' 13" E	298.61	200.00'	90° 00' 00"	31.42'	20.00'
28	N 79° 50' 13" E	298.61	200.00'	90° 00' 00"	31.42'	20.00'
29	N 79° 50' 13" E	298.61	200.00'	90° 00' 00"	31.42'	20.00'
30	N 79° 50' 13" E	298.61	200.00'	90° 00' 00"	31.42'	20.00'
31	N 79° 50' 13" E	298.61	200.00'	90° 00' 00"	31.42'	20.00'
32	N 79° 50' 13" E	298.61	200.00'	90° 00' 00"	31.42'	20.00'
33	N 79° 50' 13" E	298.61	200.00'	90° 00' 00"	31.42'	20.00'
34	N 79° 50' 13" E	298.61	200.00'	90° 00' 00"	31.42'	20.00'
35	N 79° 50' 13" E	298.61	200.00'	90° 00' 00"	31.42'	20.00'
36	N 79° 50' 13" E	298.61	200.00'	90° 00' 00"	31.42'	20.00'

NO.	CHORD BRG.	CHORD RADIUS	CEN. ANG.	ARC	TAN.	
37	S 74° 44' 09" E	119.33'	200.00'	34° 42' 53"	121.18'	62.51'
38	S 60° 34' 45" E	19.54'	175.00'	06° 24' 07"	19.55'	9.79'
39	S 52° 26' 15" E	70.04'	11259.16'	00° 51' 34"	70.04'	35.32'
40	N 77° 37' 20" E	24.78'	17.52'	90° 00' 00"	27.53'	17.52'
41	S 68° 07' 45" E	89.95'	225.00'	21° 30' 14"	84.45'	42.79'
42	S 68° 07' 45" E	89.95'	225.00'	21° 30' 14"	84.45'	42.79'
43	S 73° 24' 44" E	110.48'	200.00'	32° 04' 03"	111.94'	57.48'
44	S 73° 24' 44" E	110.48'	200.00'	32° 04' 03"	111.94'	57.48'
45	S 73° 24' 44" E	110.48'	200.00'	32° 04' 03"	111.94'	57.48'
46	S 73° 24' 44" E	110.48'	200.00'	32° 04' 03"	111.94'	57.48'
47	N 48° 32' 14" E	79.58'	225.00'	20° 22' 19"	80.00'	40.43'
48	N 48° 32' 14" E	79.58'	225.00'	20° 22' 19"	80.00'	40.43'
49	N 48° 32' 14" E	79.58'	225.00'	20° 22' 19"	80.00'	40.43'
50	N 48° 32' 14" E	79.58'	225.00'	20° 22' 19"	80.00'	40.43'
51	N 61° 35' 16" E	193.72'	200.00'	57° 55' 15"	202.22'	110.71'
52	N 61° 35' 16" E	193.72'	200.00'	57° 55' 15"	202.22'	110.71'
53	N 61° 35' 16" E	193.72'	200.00'	57° 55' 15"	202.22'	110.71'
54	N 61° 35' 16" E	193.72'	200.00'	57° 55' 15"	202.22'	110.71'
55	N 45° 39' 03" E	28.28'	20.00'	32° 12' 40"	32.19'	20.79'
56	N 45° 39' 03" E	28.28'	20.00'	32° 12' 40"	32.19'	20.79'
57	N 45° 39' 03" E	28.28'	20.00'	32° 12' 40"	32.19'	20.79'
58	N 45° 39' 03" E	28.28'	20.00'	32° 12' 40"	32.19'	20.79'
59	N 44° 13' 50" E	67.02'	20.00'	87° 21' 10"	30.49'	19.10'
60	N 44° 13' 50" E	67.02'	20.00'	87° 21' 10"	30.49'	19.10'
61	N 80° 45' 57" E	63.98'	11659.16'	00° 18' 52"	63.98'	31.98'
62	N 80° 45' 57" E	63.98'	11659.16'	00° 18' 52"	63.98'	31.98'
63	N 80° 45' 57" E	63.98'	11659.16'	00° 18' 52"	63.98'	31.98'
64	N 80° 45' 57" E	63.98'	11659.16'	00° 18' 52"	63.98'	31.98'
65	N 80° 45' 57" E	63.98'	11659.16'	00° 18' 52"	63.98'	31.98'
66	N 80° 45' 57" E	63.98'	11659.16'	00° 18' 52"	63.98'	31.98'
67	N 80° 45' 57" E	63.98'	11659.16'	00° 18' 52"	63.98'	31.98'
68	N 80° 45' 57" E	63.98'	11659.16'	00° 18' 52"	63.98'	31.98'
69	N 80° 45' 57" E	63.98'	11659.16'	00° 18' 52"	63.98'	31.98'
70	N 80° 45' 57" E	63.98'	11659.16'	00° 18' 52"	63.98'	31.98'
71	N 80° 45' 57" E	63.98'	11659.16'	00° 18' 52"	63.98'	31.98'

NO.	BEARING	DIST.
1	N 06° 25' 38" W	50.00'
2	S 89° 26' 45" E	16.50'
3	S 57° 26' 45" E	66.08'
4	N 01° 39' 25" W	35.03'
5	N 01° 39' 25" W	35.03'
6	N 89° 47' 33" E	72.02'
7	N 89° 47' 33" E	72.02'
8	N 89° 26' 45" E	34.79'
9	N 26° 53' 14" E	61.71'
10	N 32° 03' 18" E	60.15'
11	N 89° 26' 45" E	24.73'
12	N 89° 26' 45" E	24.73'
13	N 89° 26' 45" E	24.73'
14	N 21° 02' 30" E	60.41'
15	N 80° 49' 35" E	16.24'
16	N 00° 39' 15" E	20.76'
17	N 00° 39' 15" E	25.03'
18	N 32° 37' 18" E	21.38'
19	N 57° 26' 45" E	21.81'
20	N 57° 26' 45" E	21.81'
21	N 32° 37' 18" E	12.48'
22	N 32° 37' 18" E	2.31'
23	N 37° 26' 45" E	42.59'
24	N 00° 39' 15" E	25.03'
25	N 79° 50' 13" E	31.61'

Beig F. Farnell
Book 33
Page 45
22
17

Daisy Jaberko