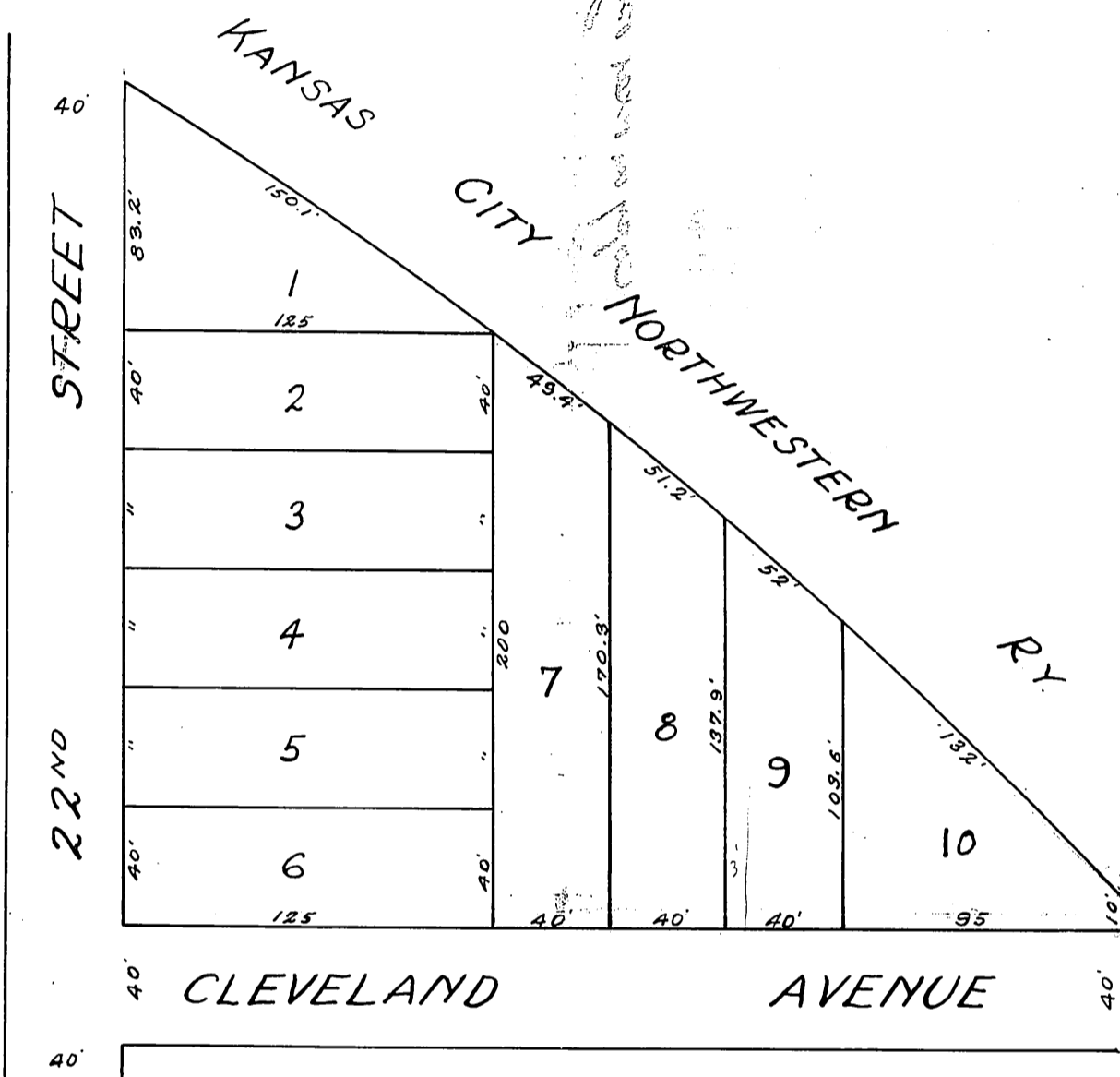
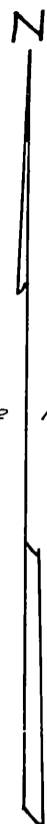


Doust's Resurvey

A RESURVEY OF LOTS 1 & 10 LINWOOD PARK

Surveyed by: *P.A. Williamson*
County Surveyor.

Scale 1"=60'



DESCRIPTION

This plat of Doust's Resurvey is a resurvey of lots 1 and 10 Linwood Park.

DEDICATION

The tracts intended for sale are described by numbers as lots in Doust's Resurvey the dimensions of which are shown on this plat. The streets shown hereon are already in public use.

In witness whereof The Citizens Savings and Loan Association, owner of the above described tract of land, has caused this plat to be signed by its President and attested by its Secretary this 30th day of December A.D. 1927

Signed:

THE CITIZENS SAVINGS AND LOAN ASSOCIATION

Attest: *Prof. M. J. ...*
Secretary

By: *E. D. Williams*
President

STATE OF KANSAS } S.S.
COUNTY OF WYANDOTTE }

Be it remembered that on this 30th day of December A.D. 1927, before me the undersigned, a Notary Public in and for the above named County and State, came **E. D. WILLIAMS**, President of the Citizens Savings and Loan Association, owner of the above tract of land, who is personally known to me to be the President of The Citizens Savings and Loan Association; and the same person who executed this instrument of writing and duly acknowledged the execution of the same to be the voluntary act and deed of The Citizens Savings and Loan Association.

In Witness Whereof I have hereunto subscribed my name and affixed my notarial seal this 30th day of December A.D. 1927
My Commission Expires November 1, 1931

Approved by Planning Commission
Robert A. Lindsay
Secretary
Feb 29, 1928

Approved by City Engineer
R. W. ...
City Engineer

J. M. ...
Notary Public
Approved by City Commissioners
March 1, 1928
Howard ...
City Clerk