

# MAP OF FAUTECK'S SUBDIVISION IN WYANDOTTE COUNTY KANSAS

FAUTECK'S SUBDIVISION  
BOOK 8 PAGE 45

This PLAT OF FAUTECK'S SUBDIVISION covers land in Wyandotte County Kansas, described as follows:-

Beginning at a point 660 feet south of the center of Section 31 - Twp. 10 South - R. 25 East, thence west 660 feet; thence south 1088.5 feet; thence east 313.5 feet; thence north 264 feet; thence east 346.5 feet; thence north 874.5 feet to the point of beginning.

The lands reserved for sale are numbered from 1 to 15 and they will hereafter be known as lots in Fauteck's Subdivision. The parcels of ground intended for public use are streets and avenues, the name, extent and direction of which are shown and they are hereby dedicated to public use as such.

In Testimony whereof Frederick Fauteck and Elizabeth Fauteck proprietors of the above described tract have hereunto subscribed their names this 13<sup>th</sup> day of April 1905.

*Frederick Fauteck*  
*Elizabeth Fauteck*

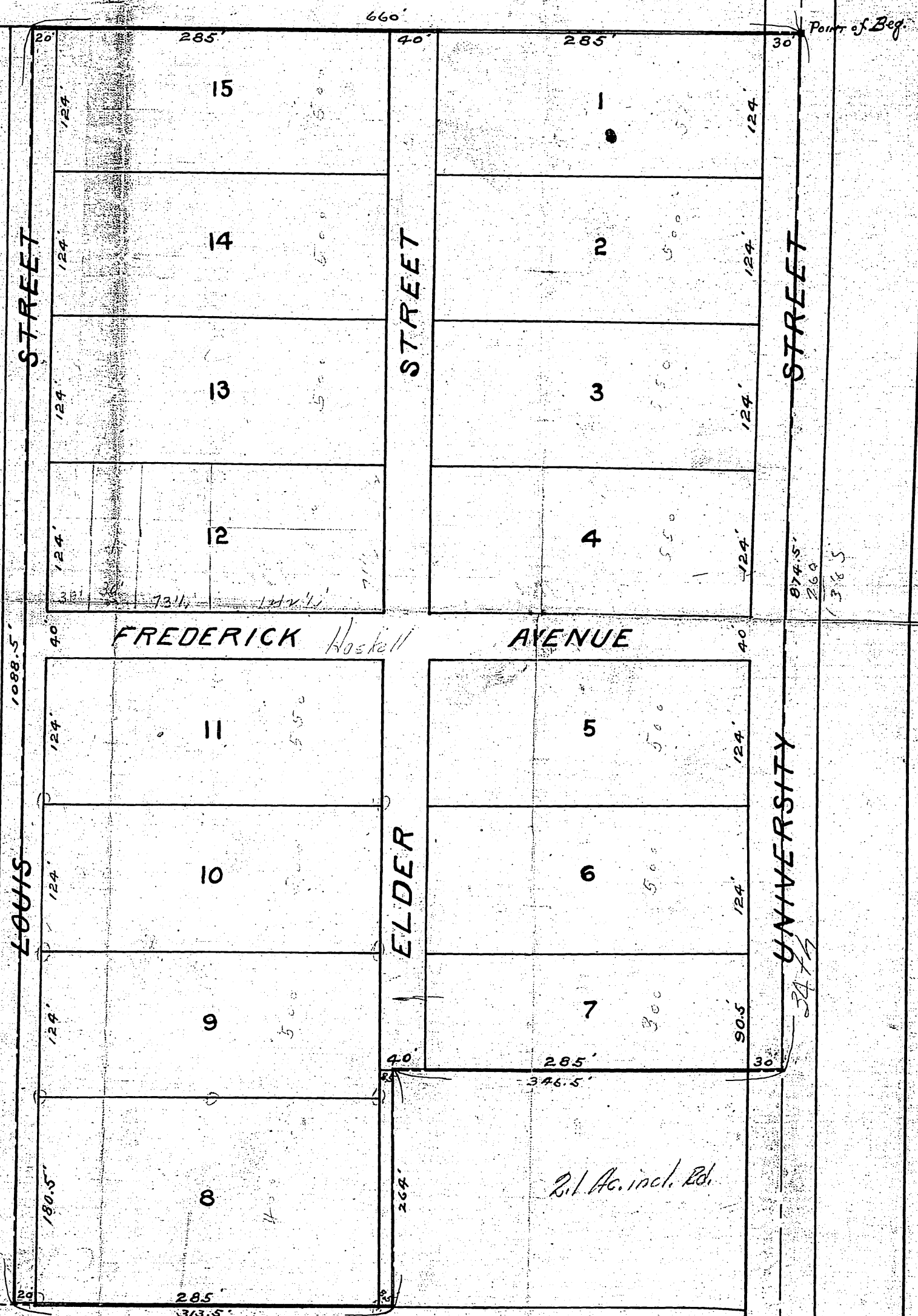
STATE OF KANSAS }  
COUNTY OF WYANDOTTE } ss

Be it remembered that on this 13<sup>th</sup> day of April A.D. 1905, before me a Notary Public in and for the County and State aforesaid, came Frederick Fauteck and Elizabeth Fauteck his wife, who are personally known to me to be the same persons who executed the foregoing instrument, and duly acknowledged the execution of the same.

In Witness Whereof, I have hereunto subscribed my name and affixed my Notarial Seal the day and year last above written.

*A. S. Denton*  
Notary Public

My Commission expires *Oct 26<sup>th</sup> 1907*



KANSAS CITY LEAVENWORTH ELECTRIC RAILWAY

SCALE 100' = 1"

8  
45