

Frances Place.

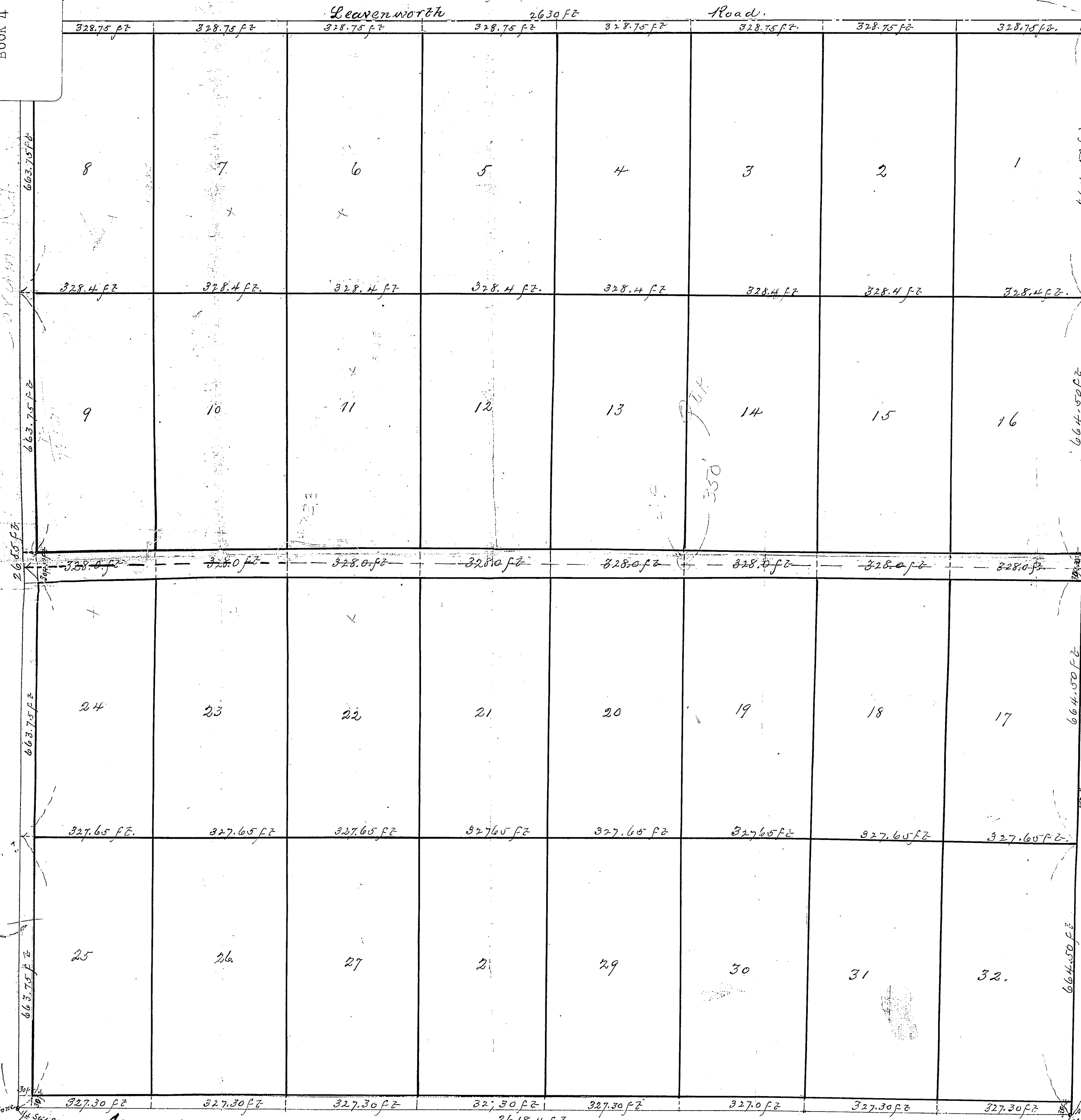
N. W. 1/4, Sec. 31, T. 10. S. R. 24 E. Wyandotte County Kansas.

Scale 200' = 1"

Filed April 6th 1888

H. Lougace
Register of Deeds
W. C. Paulsen
Deputy

Geo. W. Thorne
Eng.



Frances Place, covers land in Wyandotte County Kansas; described as follows: Being the North West quarter of Section 31. Town 10. South, Range 24 East.

The Lands reserved for Sale, are described by numbers in Lots Frances Place; The lots being numbered with small black figures. The parcels of ground in the Subdivision reserved for Public use are Roads and Streets, The names, extent and direction of all such Roads and Streets are designated on Plat and are reserved for Public purposes as such; all Lots intended for Sale are set forth and described by numbers in Lots; The precise length and width of each Lot in feet and decimal portions thereof, is set forth on this Plat in small black figures.

In Testimony Whereof *we* have hereunto affixed *our* names and seals this *fourteenth* day of *March* A.D. 1888.
Edwin O. Lapham
William A. Hewes

I *Geo. W. Thorne* hereby certify that I made the Survey of N. W. 1/4 Section 31 Town 10. S. Range 24 E. and that this Plat is a correct copy and Plat of the same, as established by actual Survey according to the Established corner stones and monuments of said Section. This *2nd* day of February A.D. 1888.

Geo. W. Thorne

State of Missouri, Subscribed 19th March 1888 before me a Notary Public for said County of Jackson came Edwin O. Lapham and William A. Hewes, personally known to me to be the persons who executed the foregoing instrument and they duly acknowledged the execution of the same.
In Witness Whereof I have hereunto set my hand and affixed my Notarial seal the day and year last above written, Term expires January 20, 1892.
Fred W. Fleury
Notary Public, Jackson County, Mo.