

# G L E N D A L E.

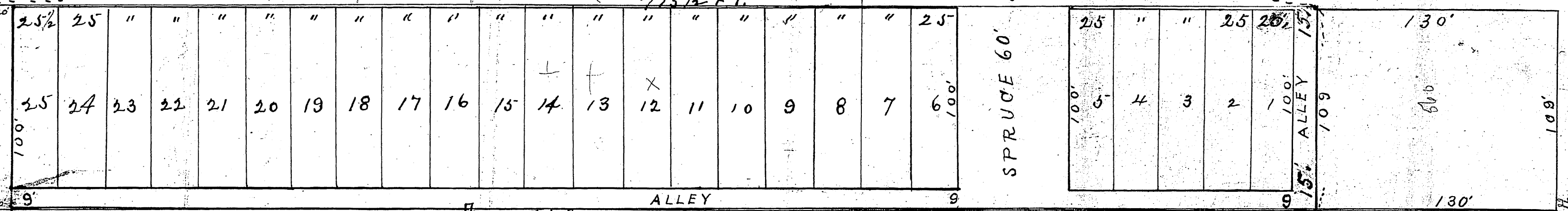
WYANDOTTE COUNTY, KANSAS.

SANFORD.

AVENUE.

NORTH 9<sup>th</sup> STREET.

NORTH 8<sup>th</sup> STREET.



264 FT.

45 1/2 FT

SCALE 1 inch 50 Feet

*Kansas City Kansas*  
August 30<sup>th</sup> 1898

Description of Land in above Plat  
Commencing at a point 289 ft. North of the centre of Sec. 33, T. 10, R. 25. Thence east 45 1/2 ft. thence north 109 ft. to the south line of Clark Avenue as shown by the recorded Plat of Cobb Heights now called Sanford Avenue, thence west along said Avenue on south line 715 1/2 ft. to a point, thence south 109 ft. to a point due west of beginning, thence east 264 ft. to beginning.

Dedication All Lots are marked on this Plat from 1 to 25 sizes also given on Lots; All Streets and Alleys are given to the Public for their use as shown on Plat

center Sec 33 T 10 R 25

B. N. Simpson

Approved in Council Oct. 25<sup>th</sup> 1898,

*Geo. G. Grayer*  
City Clerk

STATE OF Kansas } S. S.  
County of Wyandotte }

On this 30<sup>th</sup> day of August A.D. 1898. Before the undersigned a Notary Public in and for the above county and state personally appeared B. N. Simpson a single man to me personally known to be the person whose name is subscribed to foregoing dedication and duly acknowledged the execution of the same

My Commission Expires

E. L. Simpson

March 26<sup>th</sup> 1901

Notary Public

