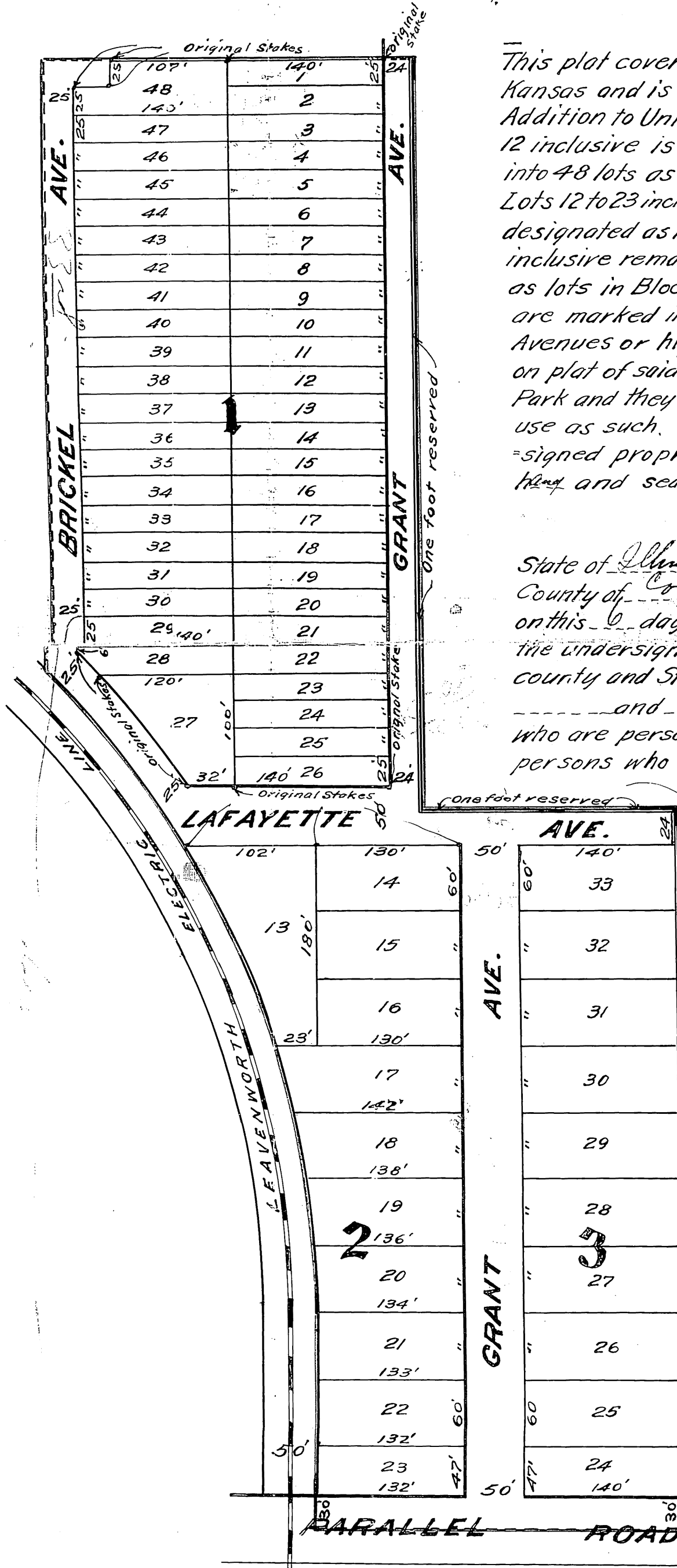


A SUBDIVISION OF GRANT'S ADDITION

TO UNIVERSITY PARK
Scale 1"=100'

63
10
C. H. Kuntzmann
32-10-1909



This plat covers land in Wyandotte County Kansas and is a subdivision of Grant's Addition to University Park, to wit: Lots 1 to 12 inclusive is now Block and is subdivided into 48 lots as shown on accompanying plot. Lots 12 to 23 inclusive remain the same but are designated as lots in Block 2; lots 24 to 33 inclusive remain the same but are designated as lots in Block 3. The dimensions of all lots are marked in small black figures. The Avenues or highways are the same as shown on plat of said Grant's Addition to University Park and they are hereby dedicated to public use as such. In Testimony Whereof the undersigned proprietor have hereunto set their hand and seal this 9 day of Dec. A.D. 1909

Joseph N. Grant
William H. Grant

State of Illinois }
County of Cook } ss. Be it remembered that on this 9 day of Dec. A.D. 1909, before me the undersigned a Notary Public in and for the county and State aforesaid came Joseph N. Grant and William H. Grant his wife who are personally known to me to be the same persons who executed the foregoing plot and

dedication and duly acknowledged the execution of the same.

In Testimony Whereof I have hereunto set my hand and affixed my Notarial seal the day and year last above written.

Charles S. ...
Notary Public.
My commission expires 3/3/13

[Signature]