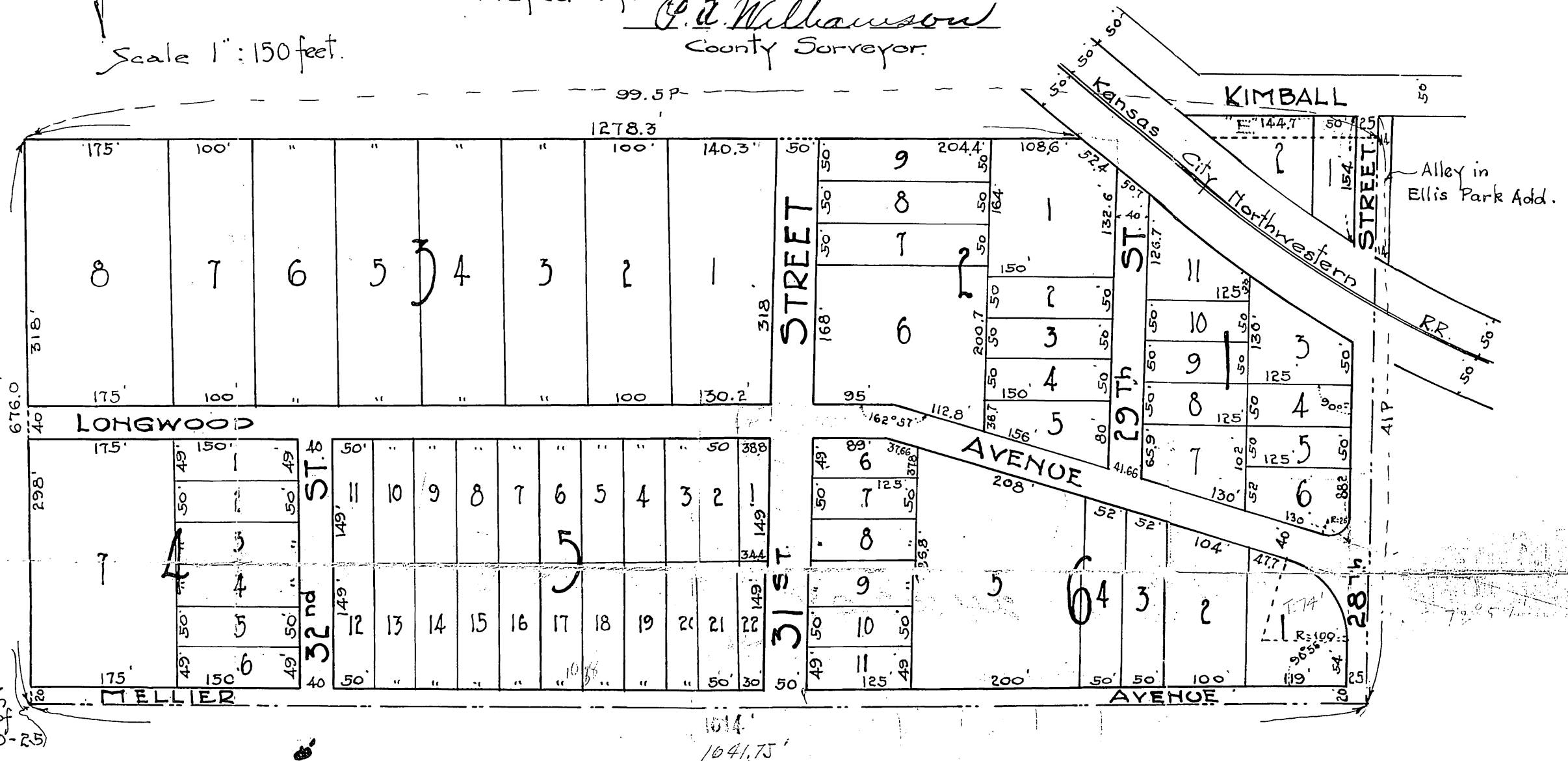


Haynes' Subdivision

A SUBDIVISION OF LAND IN KANSAS CITY,
WYANDOTTE COUNTY, KANSAS

Surveyed by: P. A. Williamson
County Surveyor.

Scale 1" = 150 feet.



Point of beg.
673 feet east &
107.25 feet North
of the center of
Section 31-10-25

DESCRIPTION

This plat of "HAYNES' SUBDIVISION" covers land in Wyandotte County described as follows:
Beginning at a point 673 feet east and 107.25 feet north of the center of section 31-10-25; thence north 41 poles, thence east 99.5 poles, thence south 41 poles, thence west 99.5 poles to the point of beginning.
Also all of Lot "E" of Heland Place.

State of Kansas } ss.
County of Wyandotte }

Be it remembered that on this 30th day of July AD. 1924, before me the undersigned, a Notary Public in and for the above named County and State came - George O. Haynes and M.M. Haynes his wife, who are personally known to me to be the same persons who executed the above instrument and duly acknowledged the execution of the same as their own free act and deed.

In "Witness Whereof", I have hereunto subscribed my name and affixed my notarial seal the day and year last above written.

My Commission Expires

Notary Public
May 9, 1927

DEDICATION

The lands intended for sale are described by numbers as Lots in "HAYNES' SUBDIVISION" the dimensions of which are shown on this plat. The parcels reserved for public use are streets or Avenues, the names, extent and direction of which are shown on this plat; and they are hereby dedicated to the public for use as such. In "Testimony Whereof", we the undersigned owners of the above described Tract of land have hereunto set our hands and seals this 30th day of July AD. 1924.

George O. Haynes Seal.
M.M. Haynes Seal.

I, Howard Payne, City Clerk of Kansas City, Kansas, hereby certify that the foregoing plat of "Haynes' Subdivision" was approved by the board of commissioners this 25 day of June AD. 1924.

Howard Payne
City Clerk

Approved by City planning Commission.

Califlow Roberts
Secretary

Approved by City Engineer

R. L. McAlpine
City Engineer