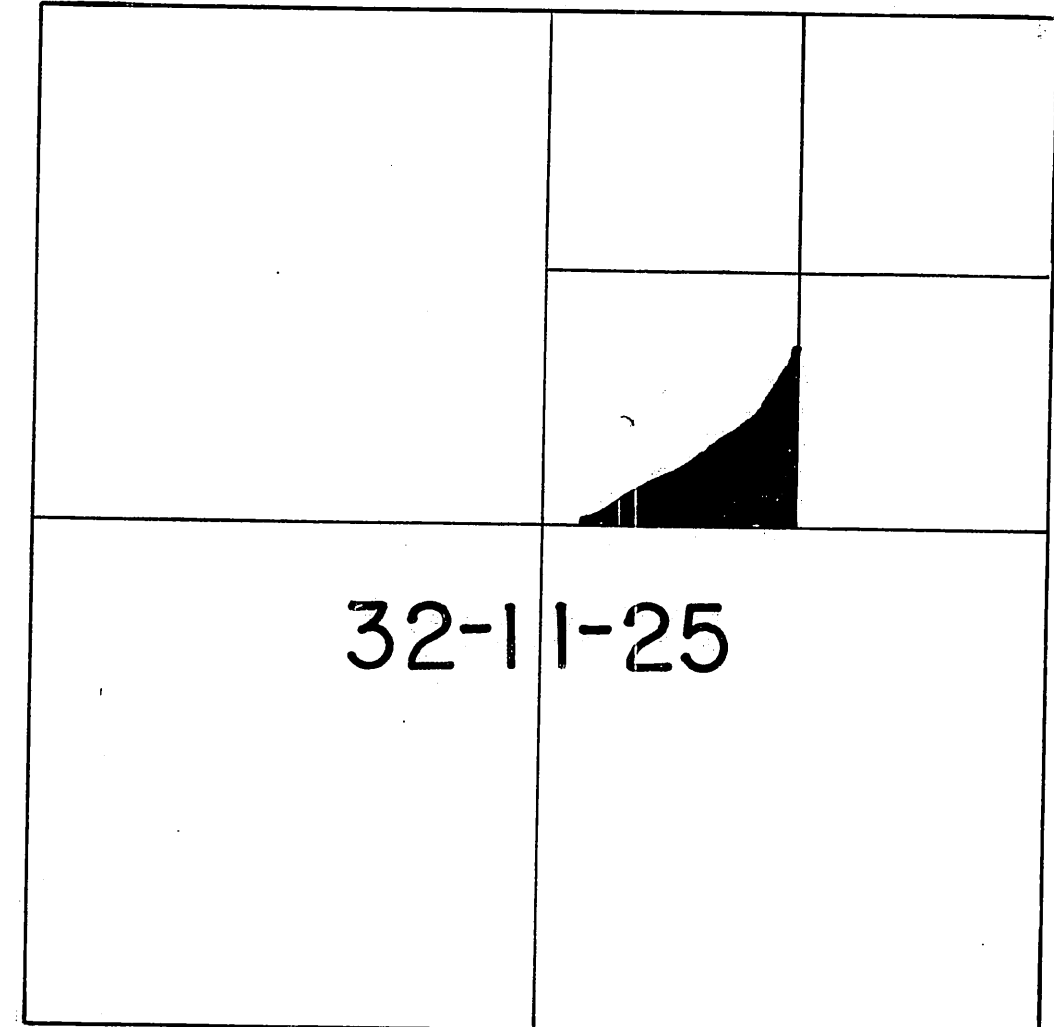
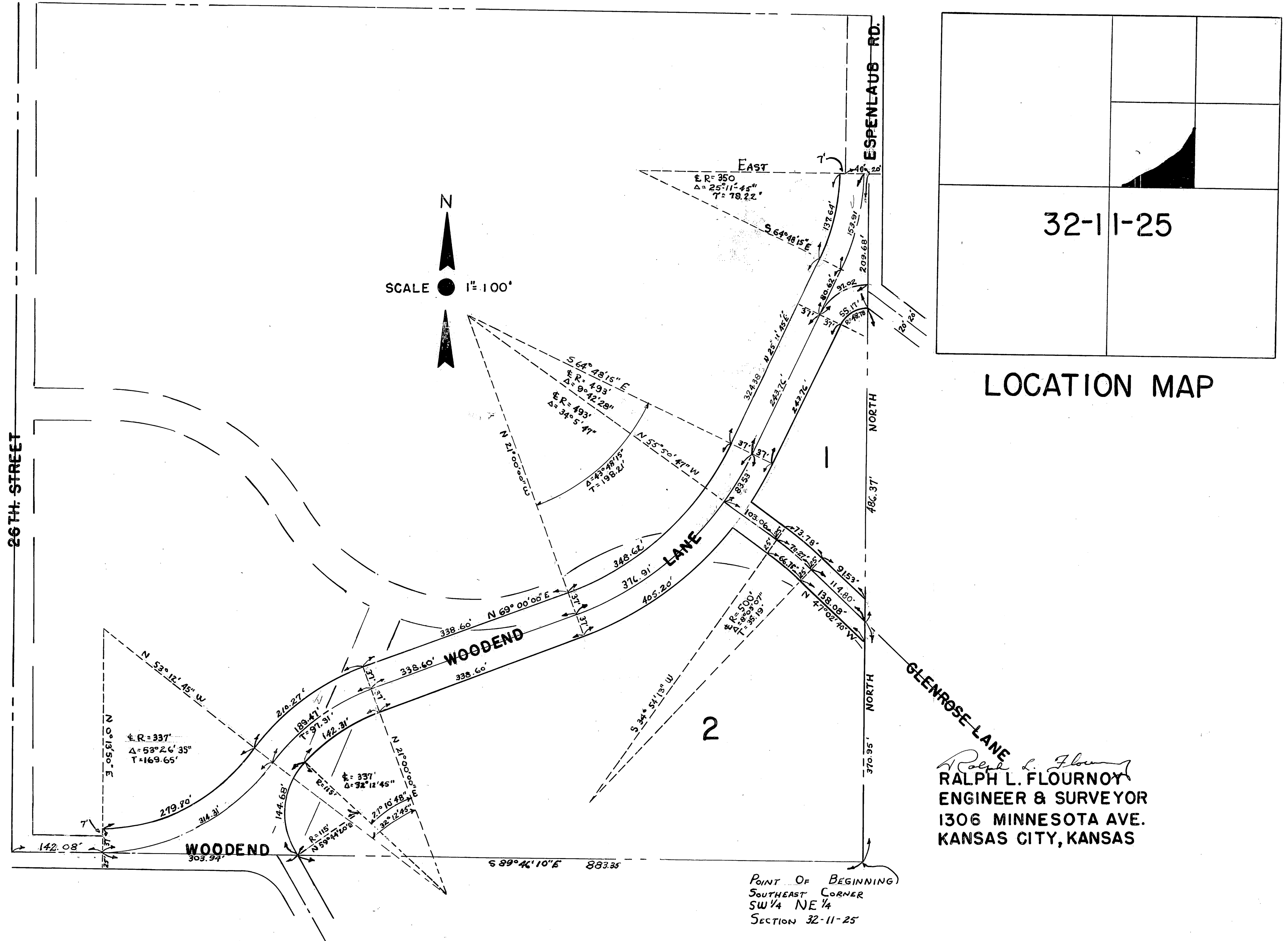


# REPLAT OF PART OF HOLSINGER HILLS KANSAS CITY, WYANDOTTE COUNTY, KANSAS



LOCATION MAP

*Ralph L. Flournoy*  
**RALPH L. FLOURNOY**  
ENGINEER & SURVEYOR  
1306 MINNESOTA AVE.  
KANSAS CITY, KANSAS

**DESCRIPTION:** THIS IS A REPLAT OF PART OF HOLSINGER HILLS A SUBDIVISION IN KANSAS CITY, WYANDOTTE COUNTY, KANSAS DESCRIBED AS FOLLOWS:  
BEGINNING AT THE SOUTHWEST CORNER OF THE SOUTHWEST QUARTER OF THE NORTHEAST QUARTER OF SECTION 32, TOWNSHIP 11, RANGE 25 IN KANSAS CITY, WYANDOTTE COUNTY, KANSAS; THENCE NORTH 1067.0 FEET, THENCE WEST 47.0 FEET, THENCE SOUTHEASTERLY ON A CURVE TO THE LEFT HAVING A RADIUS OF 312.0 FEET A DISTANCE OF 137.64 FEET, THENCE SOUTH 25° 11' 45" WEST A DISTANCE OF 324.35 FEET, THENCE ON A CURVE TO THE RIGHT HAVING A RADIUS OF 456.0 FEET A DISTANCE OF 348.62 FEET, THENCE SOUTH 69° 00' 00" WEST A DISTANCE OF 338.60 FEET, THENCE ON A CURVE TO THE LEFT HAVING A RADIUS OF 374.0 FEET A DISTANCE OF 210.27 FEET, THENCE ON A CURVE TO THE RIGHT HAVING A RADIUS OF 300.00 FEET A DISTANCE OF 279.80 FEET, THENCE SOUTH 0° 13' 50" WEST A DISTANCE OF 37.0 FEET, THENCE SOUTH 89° 46' 10" EAST A DISTANCE OF 1187.29 FEET TO THE POINT OF BEGINNING.

**RESTRICTIONS:** THE RESTRICTIONS FOR THESE LOTS SHALL BE THOSE ESTABLISHED FOR THIS AREA BY THE BOARD OF CITY COMMISSIONERS OF KANSAS CITY, KANSAS OR ANY SUCCEEDING GOVERNING BODY.

**DEDICATION:** THE UNDERSIGNED OWNERS OF THE LAND DESCRIBED HEREON HAS CAUSED THE SAME TO BE SUBDIVIDED IN THE MANNER AS SHOWN ON THE ABOVE PLAT WHICH SUBDIVISION AND PLAT SHALL HEREAFTER BE KNOWN AS "REPLAT OF PART OF HOLSINGER HILLS".  
THE LANDS INTENDED FOR SALE ARE DESCRIBED BY NUMBERS AS LOTS WITH RESTRICTIONS, THE DIMENSIONS OF WHICH ARE SHOWN. THAT PORTION RESERVED FOR PUBLIC USE AS ROADS THE EXTENT AND DIRECTION OF WHICH ARE SHOWN AND ALL UTILITY AND DRAINAGE EASEMENTS AS SHOWN ARE HEREBY DEDICATED TO THE PUBLIC USE FOREVER.

STATE OF KANSAS SS  
COUNTY OF WYANDOTTE

BE IT REMEMBERED THAT ON THIS 11 DAY OF AUGUST, 1967 BEFORE ME THE UNDERSIGNED, A NOTARY PUBLIC, DULY COMMISSIONED IN AND FOR THE COUNTY AND STATE AFORESAID CAME CHARLES K. TRUDERS, PRESIDENT, AND IRENE V. TRUDERS, SECRETARY OF TRUDERS DEVELOPMENT COMPANY INC., A KANSAS CORPORATION, WHO A PERSONALLY KNOWN TO ME TO BE THE SAME PERSONS WHO EXECUTED AS SUCH OFFICERS THE FOREGOING INSTRUMENT IN BEHALF OF SAID CORPORATION AND THEY ACKNOWLEDGED THE EXECUTION OF THE SAME FOR THEMSELVES AND FOR SAID CORPORATION FOR THE USE AND PURPOSES AS HEREBY SET FORTH.

IN TESTIMONY WHEREOF:  
TRUDERS DEVELOPMENT COMPANY INC. HAS BY THE AUTHORITY OF IT'S BOARD OF DIRECTORS CAUSED THIS INSTRUMENT TO BE EXECUTED BY IT'S PRESIDENT AND IT'S CORPORATE SEAL TO BE AFFIXED BY IT'S SECRETARY THIS 11<sup>th</sup> DAY OF AUGUST, 1967.

IN WITNESS WHEREOF:  
I HAVE HEREBY SET MY HAND AND AFFIXED MY NOTORIAL SEAL THE DAY AND YEAR LAST ABOVE WRITTEN.

12/12/67  
MY COMMISSION EXPIRES

*Charles K. Truders*  
CHARLES K. TRUDERS-PRESIDENT

*Irene V. Truders*  
IRENE V. TRUDERS-SECRETARY

*Ralph E. Flournoy*  
NOTARY PUBLIC

APPROVED BY THE KANSAS CITY, KANSAS PLANNING BOARD

*Edward A. Freeman*  
CHAIRMAN

*Robert J. Land*  
SECRETARY

14 Aug 1967  
DATE

APPROVED BY THE BOARD OF COMMISSIONERS OF KANSAS CITY, KANSAS

*Joseph M. ...*  
MAYOR

*George ...*  
CITY CLERK

Aug. 24, 1967  
DATE

APPROVED BY THE CITY ENGINEER OF KANSAS CITY, KANSAS

*John L. ...*  
CITY ENGINEER

23 August 1967  
DATE

81