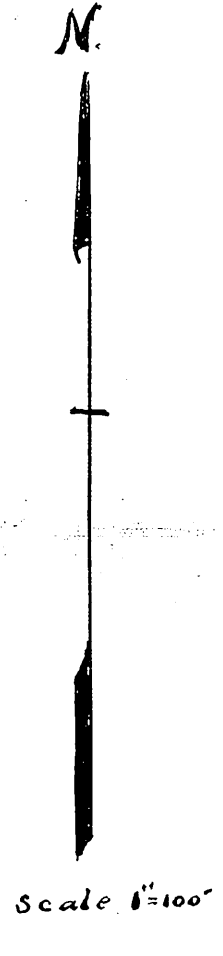
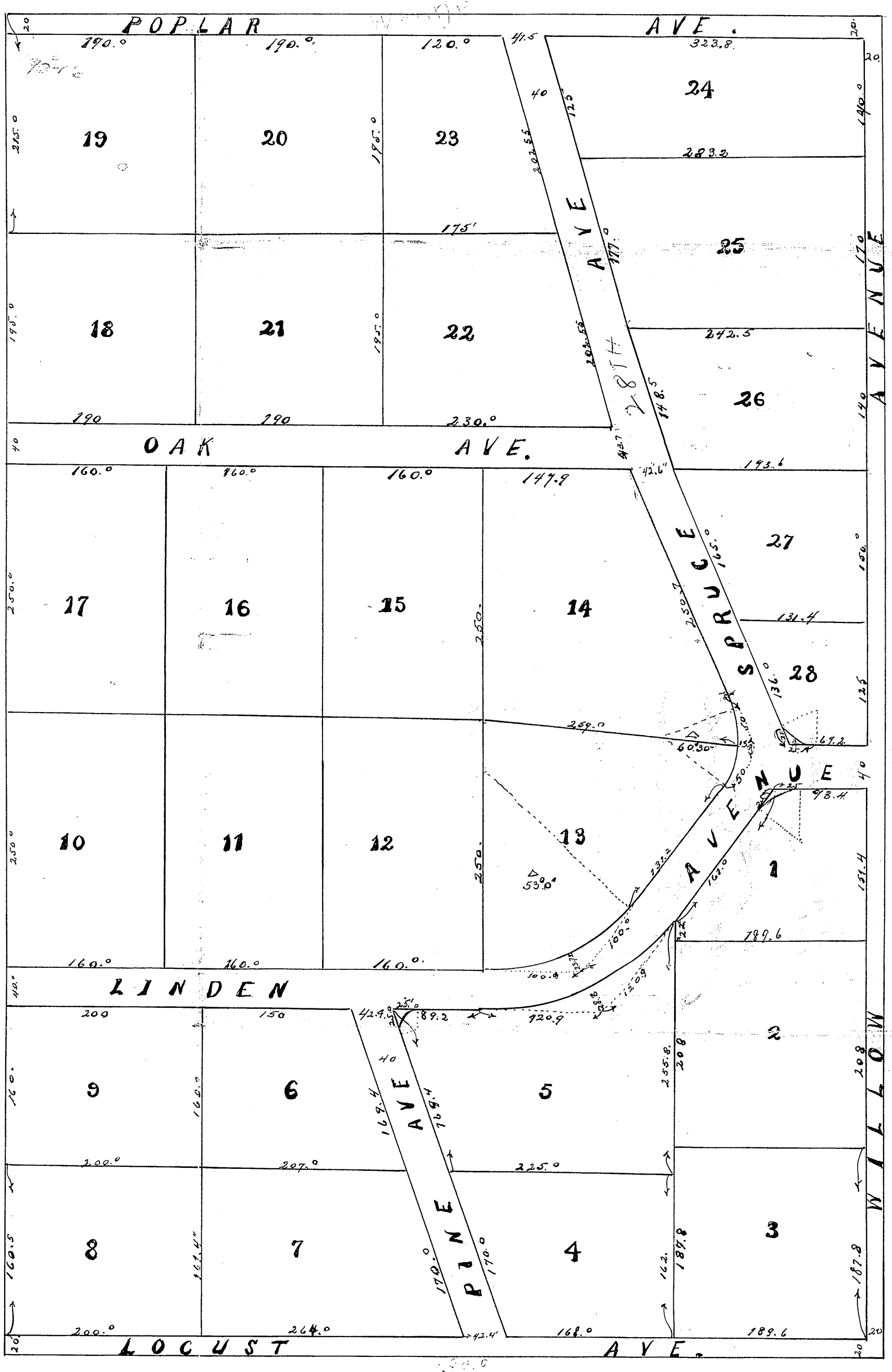


H O M E W O O D

Wyandotte County Kansas



This Subdivision of LAND shall be known as "HOMWOOD."
 This PLAT of HOMWOOD contains LAND in Wyandotte County
 described as follows:-
 Being the West Two Thirds (2/3) of NE 1/4 of Section
 Thirty Two (32) Township Eleven (N) South Range Twenty Five (25) East.

The LANDS reserved for SALE are designated by Numbers as Lots
 in HOMWOOD.
 The LANDS reserved for Public Use are Avenues; the Names Direction
 and Extent of which are shown on this PLAT and are hereby dedicated to the
 PUBLIC as such.

IN TESTIMONY whereof the Undersigned Owners of the above described
 LAND have hereunto set their Hands and Seals This 28th day of September AD 1926

Ida M. Holsinger
George W. Holsinger
Olive M. Holsinger

STATE OF KANSAS }
 COUNTY OF WYANDOTTE } ss.

Be it remembered that on this 28th day of
 September AD 1926 before me the Undersigned a Notary Public in and for
 the said County and State came
 Ida M Holsinger a single Person and George W Holsinger and
 OLIVE M Holsinger his wife who are personally known to me to be the same
 persons who executed the foregoing PLAT and DEDICATION and
 acknowledged the same to be their Free Act and Deed.
 In TESTIMONY whereof I have hereunto set my hand and affixed
 my Notarial Seal the day and year last above written.
Emma Collins
 Notary Public
 My commission expires 2nd day of July 1930.