

# RESURVEY OF KANSAS PLACE.

This Plat of Kansas Place covers ground in Wyandotte County, Kansas described as follows, to-wit:

Beginning 78.08 ft North of the South East corner of Block 1 one Rockingham Place, an Addition to Kansas City, Kansas, Thence East 516.5 ft. Thence South 1691 ft. Thence West at an angle of 90° 00' 516.5 ft. Thence North 1691 ft on a line coinciding with the East line of Rockingham Place to point of beginning.

The lands reserved for sale are described by Numbers as Lots in Kansas Place. The Lots are numbered in small figures and the Blocks in which they are located are numbered in large black figures. The parcels of ground reserved in this Addition for public use are Streets, Avenues, and Alleys. The name, extent and direction of all such Streets, Avenues, and Alleys are indicated on the Plat and are dedicated for the use of the public as such. All Lots intended for sale are described by numbers in Resurvey of Kansas Place with the exact length and breadth of each given in figures as feet and decimal parts thereof.

In testimony whereof we have this day set our hands and seal, being the owners of said Kansas Place in Kansas City, Kansas, State of Kansas County of Wyandotte. Signed this 5<sup>th</sup> day of June 1888.

Geo. W. Harden Seal  
Jos. C. Laughlin Seal  
Nellie S. Laughlin Seal

Be it remembered that on this day, June 5, 1888, personally appeared before the undersigned a Notary Public, came George W. Harden, single, Joseph C. Laughlin and Nellie S. Laughlin his wife the owners of said Kansas Place, to me personally known to be such owners and are the same persons whose names appear attached to the above instrument as such owners and acknowledged to me that they executed the same as their act and deed of their own free will for the uses and purposes therein set forth.

In testimony whereof, I have hereunto set my hand, and official seal affixed, this day, 5<sup>th</sup> of June Year 1888.  
My term of Office and Commission expires on the day 22<sup>nd</sup> of May, Year 1890.

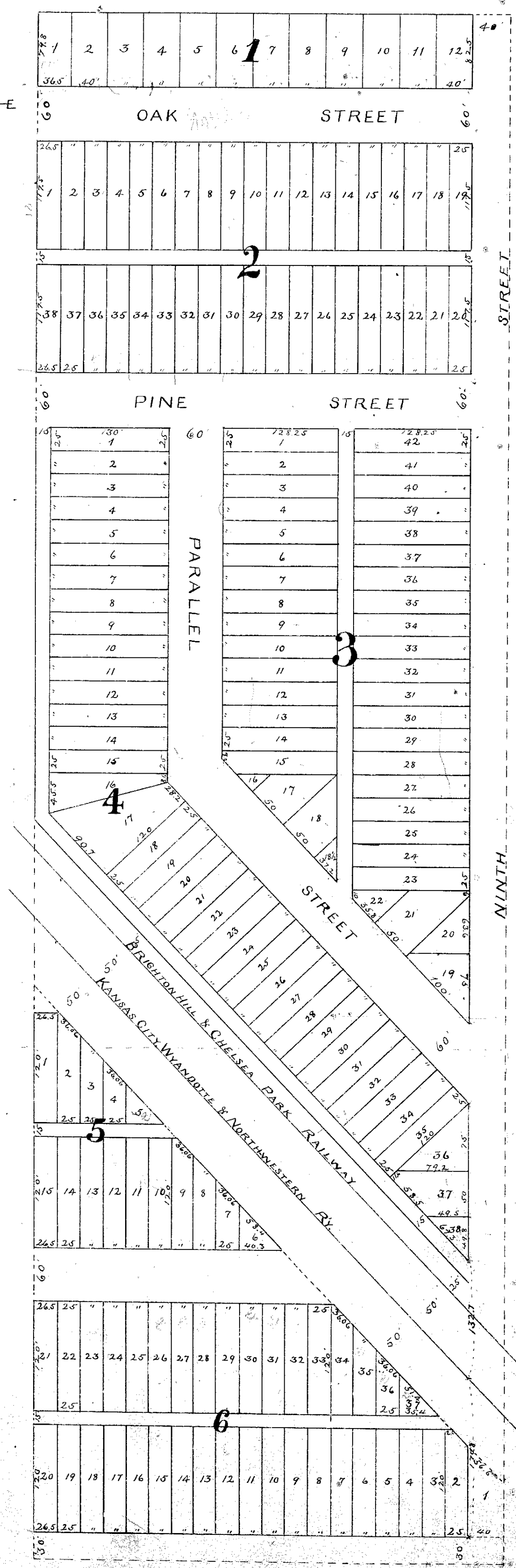
Alfred A. Cobb  
Notary Public

This is to certify that the Plat of Resurvey of Kansas Place was approved by the Mayor and Council at a meeting held in the Council Chamber on \_\_\_\_\_ evening, the \_\_\_\_\_ day of \_\_\_\_\_ Year \_\_\_\_\_ Kansas City, Kansas.

We certify the above to be a correct Plat of the Resurvey of Kansas Place with signatures as thereto attached

Kiersted and Borker  
per J. C. Hughes.

Scale 1" = 100'



Filed August 8, 1888  
at 3:00 o'clock P.M.  
A. A. Lovelace  
Register of Deeds