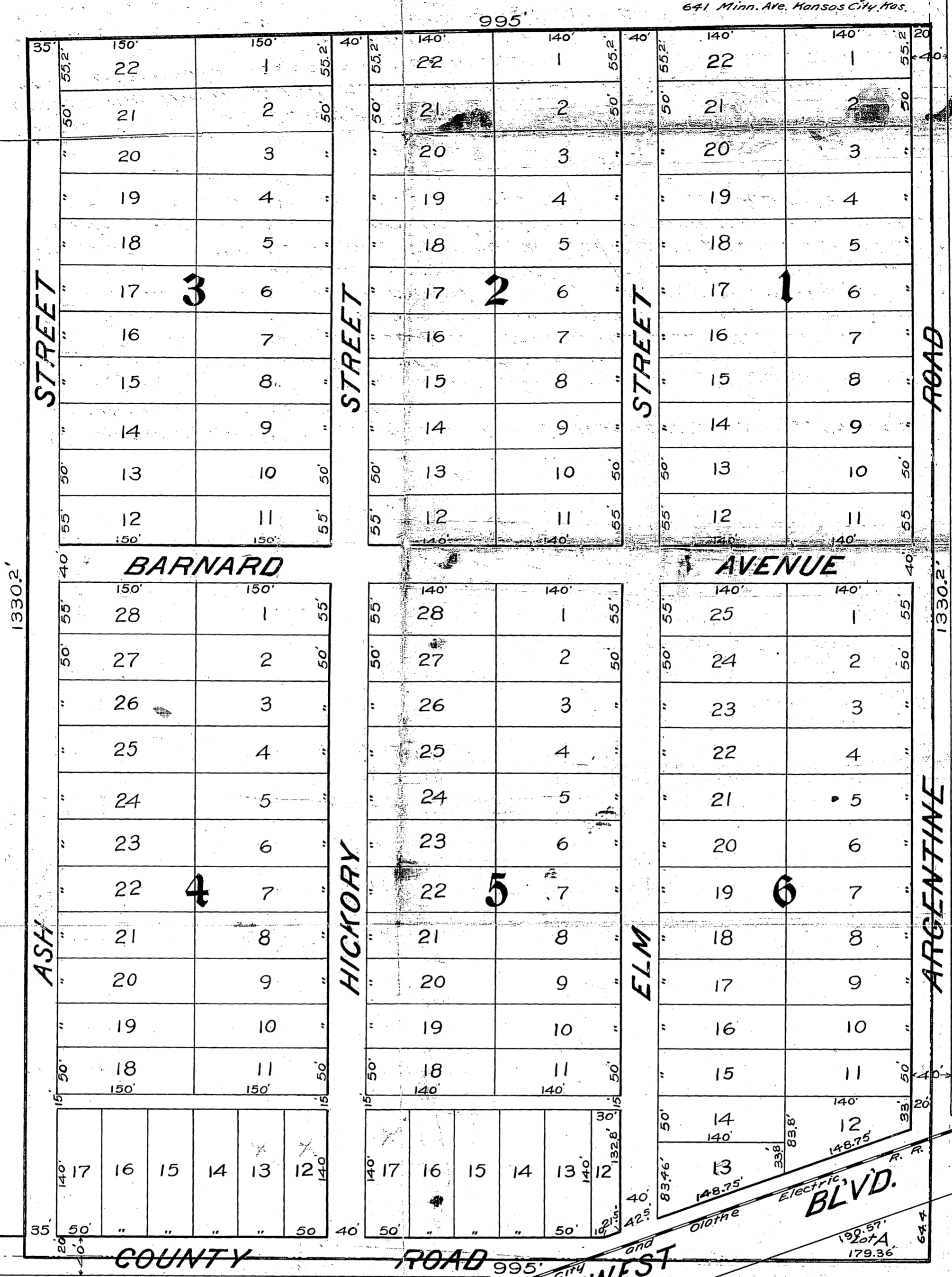


# Kinney Heights

W. J. THOMSON, Surveyor  
 641 Minn. Ave. Kansas City, Mo.



Scale 1"=100'



This plat of Kinney Heights Covers land in Wyandotte County, Kansas described as follows, to wit:

The East three eights ( $\frac{3}{8}$ ) of the South half ( $\frac{1}{2}$ ) of the South East  $\frac{1}{4}$  of Section 31 Township 11 South of Range 25.

The lands reserved for sale are lots and blocks the lots are marked in small black figures and the blocks in large black figures

The lands reserved for public use are streets, avenues, alleys and roads, the width and extent of which are shown on the accompanying plat and the same are hereby dedicated to public use as such.

In Testimony Whereof the undersigned proprietors, have hereunto set their hands and seals this 28th day of June, A. D. 1909

*Thomas P. Kinney*  
*Rosa P. Kinney*

State of ~~Missouri~~ <sup>Kansas</sup> }  
 County of ~~Jackson~~ <sup>Jackson</sup> } ss. Be it remembered that on this 28th day of June, A. D. 1909, before me the undersigned a Notary Public in and for the county and State aforesaid personally appeared *Thomas P. Kinney* and *Rosa P. Kinney* his wife, who are personally known to me to be the same persons who executed the foregoing plat and dedication and duly acknowledged the execution of the same.

In Testimony Whereof I have hereunto set my hand and affixed my Notarial seal the day and year last above written.

My Commission expires March 2, A. D. 1912 *Estelle B. Crawford*  
 Notary Public.