

This Plat of Kirby's Addition to Armourdale,

covers Land in the S.E. 1/4 of the N.W. 1/4 of Sec. 21, T. 11 S. R. 25 E. Wgandotte Co., Kas.

The boundaries of said Addition are described as follows: Beginning at the intersection of the Centerline of the Southern Bridge Road with the E. line of the S.E. 1/4 of the N.W. 1/4 of Sec. 21, a point 682.47' N. of the center of said Sec. 21; thence N. 0° 02' E. along the E. line of said N.W. 1/4 - 649.5 feet to the N.E. corner of said S.E. 1/4 of the N.W. 1/4 of Sec. 21; thence N. 89° 41' W. along the N. line of said S.E. 1/4 of the N.W. 1/4, 864.32 feet, thence S. 1190.5 feet to the before mentioned center line of the Southern Bridge Road, thence N. 58° 09' E. along the said center line 1017.71 feet to the point of beginning.

The lands reserved for sale are described by numbers as blocks and lots in "Kirby's Addition to Armourdale". The parcels of ground reserved for public use are Avenues, Streets and Alleys. The names, extent and direction of all such avenues, streets and alleys are reserved and dedicated for public use as such. All lots intended for sale are set forth and described by numbers in blocks. The precise length and width of each lot are marked thereon in feet and decimal parts thereof. The number of each lot is shown in small red figures, and the number of each block in large blue figures.

In testimony whereof the owners and proprietors of the land hereunto set their hands this sixth day of October A.D. 1887.

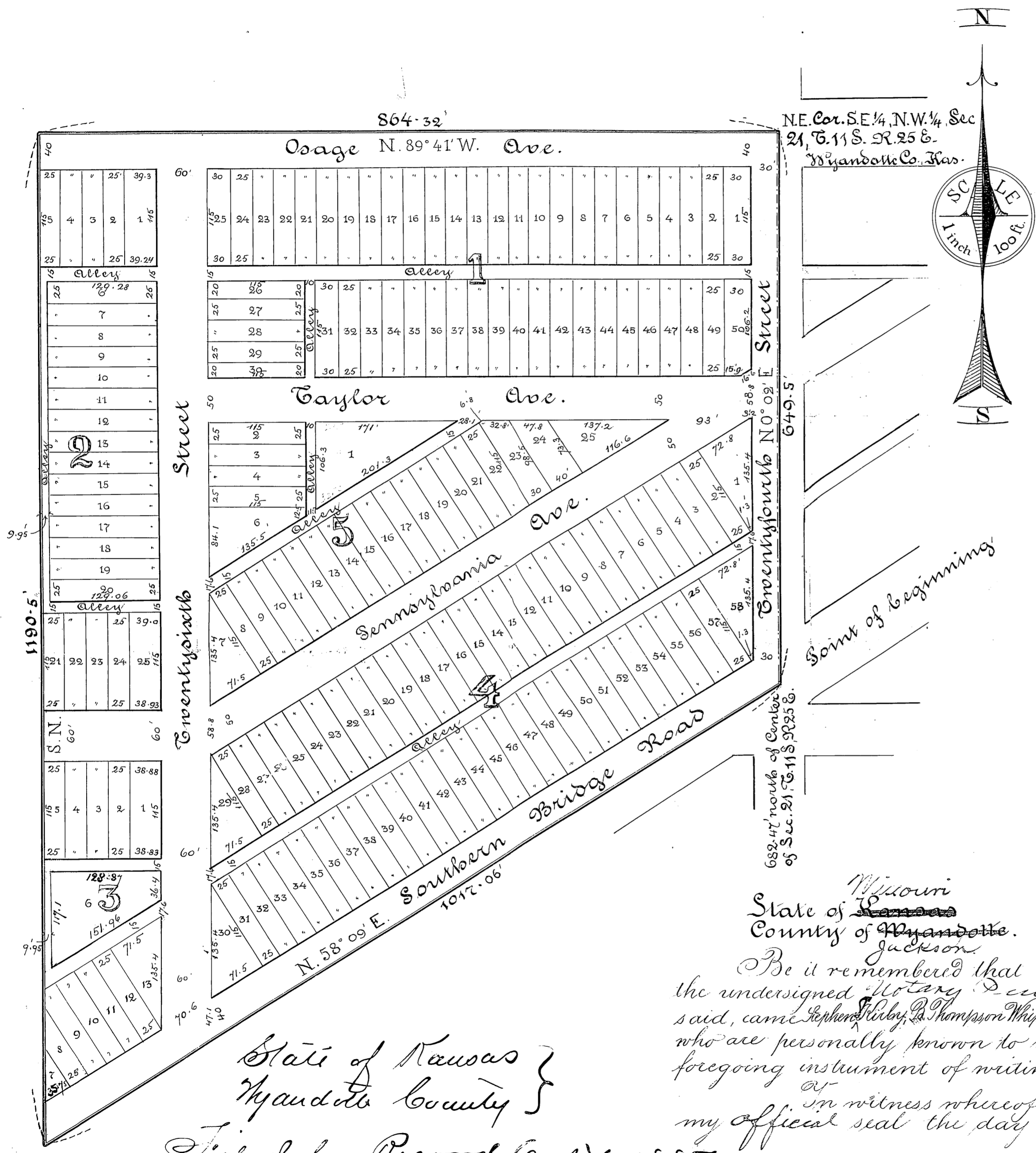
Stephen S. Kirby
 P. Thompson Whipple
 Maudie J. G. Whipple
 Adis. A. Whipple
 Judie D. Whipple

State of ~~Missouri~~ Missouri
 County of ~~Wyandotte~~ Wyandotte.
 Jackson

Be it remembered that on this 6th day of October 1887, before me the undersigned Notary Public in and for the County and State aforesaid, came Stephen Kirby, P. Thompson Whipple and Maudie J. G. Whipple, his wife, Adis. A. Whipple and Judie D. Whipple, his wife who are personally known to me to be the same persons who executed the foregoing instrument of writing and duly acknowledged the execution of the same in witness whereof I have hereunto set my hand and affixed my official seal the day and year last above written.

W. W. McMillan
 Notary Public for said County.

State of Kansas }
 Wyandotte County }
 Filed for Record Oct 6-1887
 W. W. Bridges Register of Deeds



NE. Cor. S.E. 1/4, N.W. 1/4, Sec 21, T. 11 S. R. 25 E. Wyandotte Co. Kas.

Breuntyfourth No 02' E Street 649.5
 682.47 north of Center of S.E. 1/4, T. 11 S. R. 25 E.

Point of Beginning

