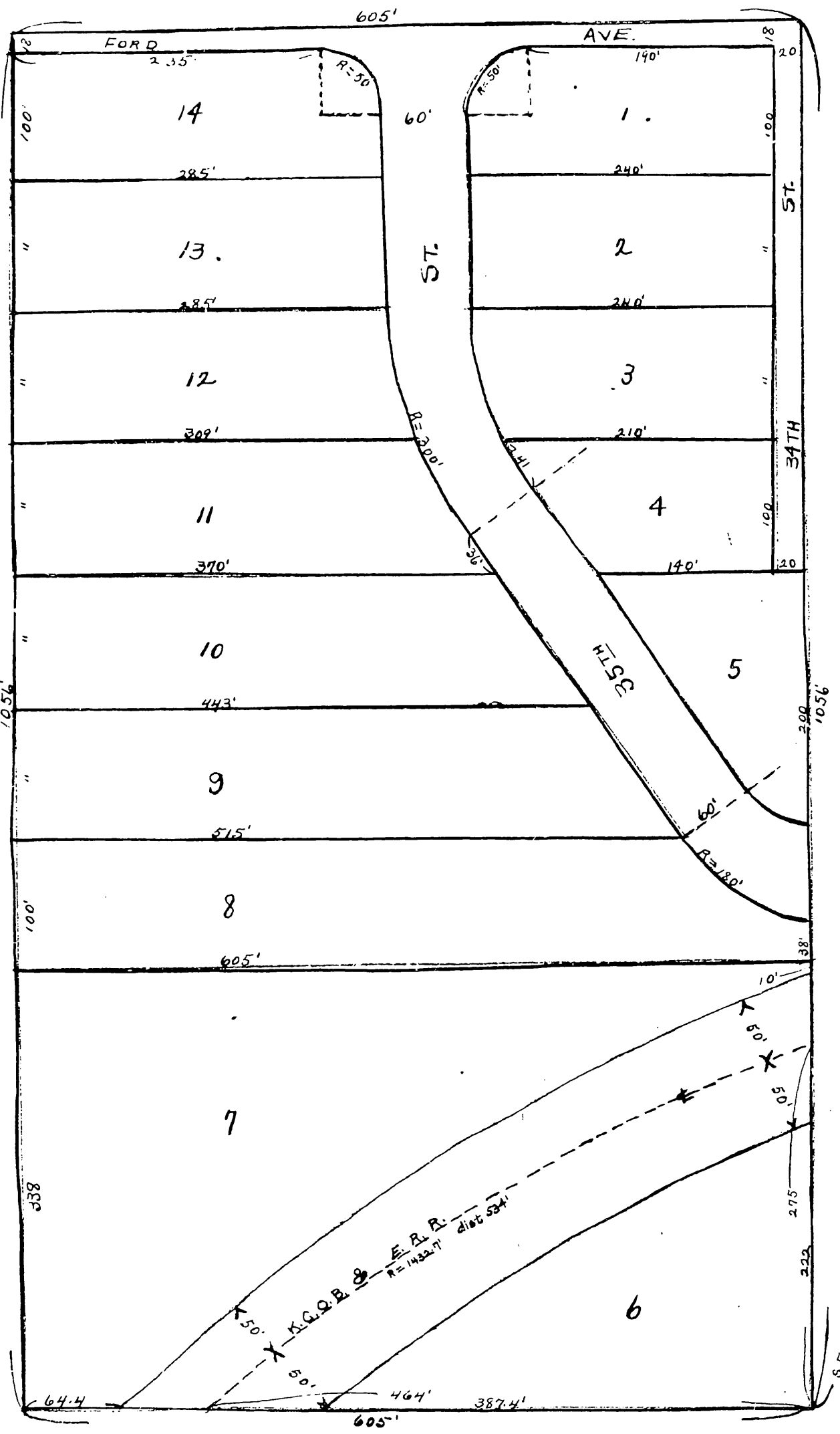


McALPINE PLACE



This Plat of McAlpine Place covers land in Wyandotte County, Kansas described as follows:-

Beginning at the southeast corner of section 7 in Twp. 11 - R. 25, thence North 1056 feet, thence west 605 feet, thence south 1056 feet, thence East 605 feet to the place of beginning; being tracts 5 & 6 of McAlpine's subdivision.

The lands reserved for sale are indicated by Numbers 1 to 14, the size and dimensions of which are shown on this plat. The parcels of ground intended for public use are streets and an Avenue the names, extent and direction of which are shown hereon and they are hereby dedicated for public use as such.

In Testimony whereof the under signed owners of the above described tract of land have hereunto subscribed their names this 17th day of September A.D. 1920

Jessie S. McAlpine.
John W. McAlpine.

State of Kansas }
County of Wyandotte } ss.

Be it remembered that on this 18th day of September A.D. 1920 before me a Notary Public in and for the County and state aforesaid came Jessie S. McAlpine and John W. McAlpine who are personally known to me to be the same persons who executed the foregoing instrument and duly acknowledged the execution of the same.

S.L. Matthews,
Notary Public

My Commission expires April 12th 1924



200767
Filed for Record Oct 29, 1920
at 4 P.M.
Walter Register of Deeds
By Kate Grindrod Deputy.

S.E. Cor. sec. 7
T. 11, R. 25