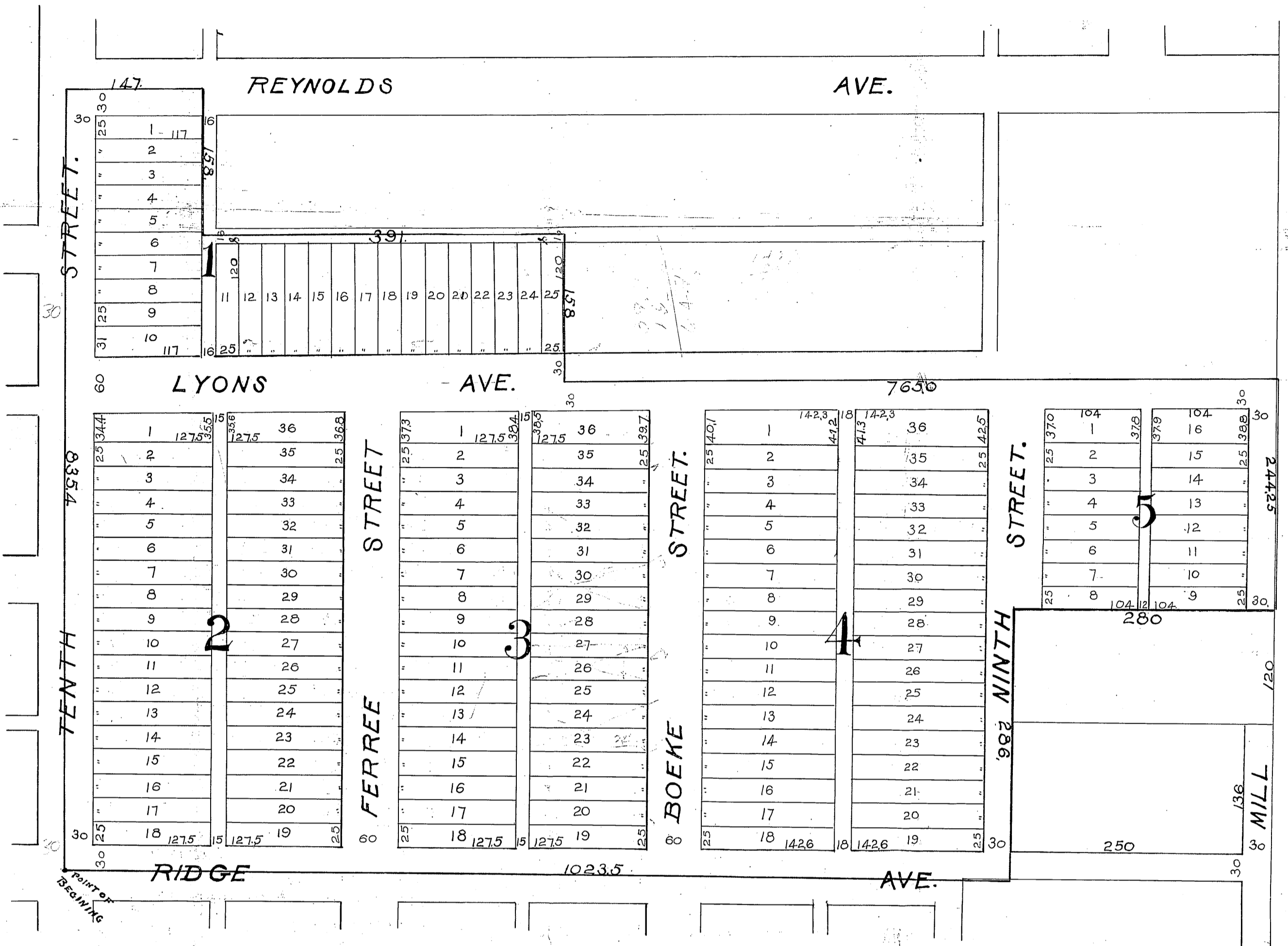


McGREW PLACE



• THIS PLAT OF *McGREW PLACE* COVERS LAND IN WYANDOTTE COUNTY KANSAS
 THUS DESCRIBED AS FOLLOWS, TO WIT:-
 • COMMENCING AT THE SOUTH WEST CORNER OF THE SOUTH EAST QUARTER (1/4) OF THE SOUTH EAST QUARTER (1/4) OF SECTION NINE (9), T. 11-R. 25-E., THENCE EAST TEN HUNDRED AND TWENTY THREE AND FIVE TENTHS (1023.5) FEET TO THE "MATHER TRACT." THENCE NORTH TWO HUNDRED AND EIGHTY SIX (286) FEET; THENCE EAST TWO HUNDRED AND EIGHTY (280) FEET; THENCE NORTH TWO HUNDRED FORTY FOUR AND TWENTY FIVE HUNDREDTHS (244.25) FEET. THENCE WEST SEVEN HUNDRED AND SIXTY FIVE (765) FEET; THENCE NORTH ONE HUNDRED AND FIFTY EIGHT (158) FEET; THENCE WEST THREE HUNDRED AND NINETY ONE (391) FEET; THENCE NORTH ONE HUNDRED AND FIFTY EIGHT (158) FEET; THENCE WEST ONE HUNDRED AND FORTY SEVEN (147) FEET; THENCE SOUTH EIGHT HUNDRED AND THIRTY FIVE AND FOUR TENTHS (835.4) FEET. TO PLACE OF BEGINNING.
 • THE LANDS RESERVED FOR SALE ARE DESCRIBED BY NUMBERS, AS BLOCKS AND LOTS IN *McGREW PLACE*. THE BLOCKS BEING NUMBERED WITH LARGE, AND THE LOTS WITH SMALL FIGURES.
 • THE PARCELS OF GROUND IN THIS SUBDIVISION RESERVED FOR PUBLIC USE ARE STREETS AVENUES AND ALLEYS; THE NAMES, EXTENT AND DIRECTION OF SUCH STREETS AVENUES AND ALLEYS ARE DESIGNATED ON THIS PLAT AND THEY ARE HEREBY DEDICATED TO PUBLIC USE AS SUCH.
 IN TESTIMONY WHEREOF THE WYANDOTTE STATE BANK PROPRIETORS OF SAID *McGREW PLACE* CAUSES THIS PLAT TO BE SIGNED BY ITS *President* AND ITS COMMON AND CORPORATE SEAL TO BE HEREUNTO AFFIXED. THIS *9th* DAY OF *October*, 1901.

The Wyandotte State Bank

Attest: Roy Schumaker *By: Porter Sherman*
Notary *President*

STATE OF KANSAS } ss
 COUNTY OF WYANDOTTE }

BE IT REMEMBERED THAT ON THIS *9th* DAY OF *October*, 1901, BEFORE ME A NOTARY PUBLIC IN AND FOR SAID COUNTY AND STATE CAME *Porter Sherman* *President* OF THE WYANDOTTE STATE BANK AND TO ME PERSONALLY KNOWN TO BE SUCH *President* AND THE SAME PERSON WHOSE NAME IS SUBSCRIBED TO THE FOREGOING INSTRUMENT AS SUCH, AND ACKNOWLEDGED THAT HE EXECUTED THE SAME AS THE ACT AND DEED OF SAID WYANDOTTE STATE BANK BY ORDER OF ITS BOARD OF DIRECTORS FOR THE USES AND PURPOSES THEREIN MENTIONED; AND THAT THE SEAL AFFIXED TO SAID INSTRUMENT IS THE COMMON AND CORPORATE SEAL OF SAID CORPORATION AND WAS AFFIXED THERETO BY HIMSELF BY ORDER OF SAID BOARD OF DIRECTORS.

• WITNESS MY HAND AND NOTORIAL SEAL THE DAY AND YEAR FIRST ABOVE WRITTEN.

MY COMMISSION EXPIRES *August 2nd 1902*

W. J. Barker Jr.
 NOTARY PUBLIC.

W. B. Trembley City Clerk of Kansas City, Kansas do hereby certify that the above plat of *McGrew Place* was approved by the Mayor and Councilmen of this city on the *15th* day of *October*, 1901
 Witness my hand and seal of the city this *16th* day of *October*, 1901

116956
 State of Kansas, Wyandotte County, ss.
 Received for record on the *16th* day of *Oct*, 1901
3:30 P. M. and all
 recorded in Record of Plat 7
35
C. B. McConigal
A. C. Cook