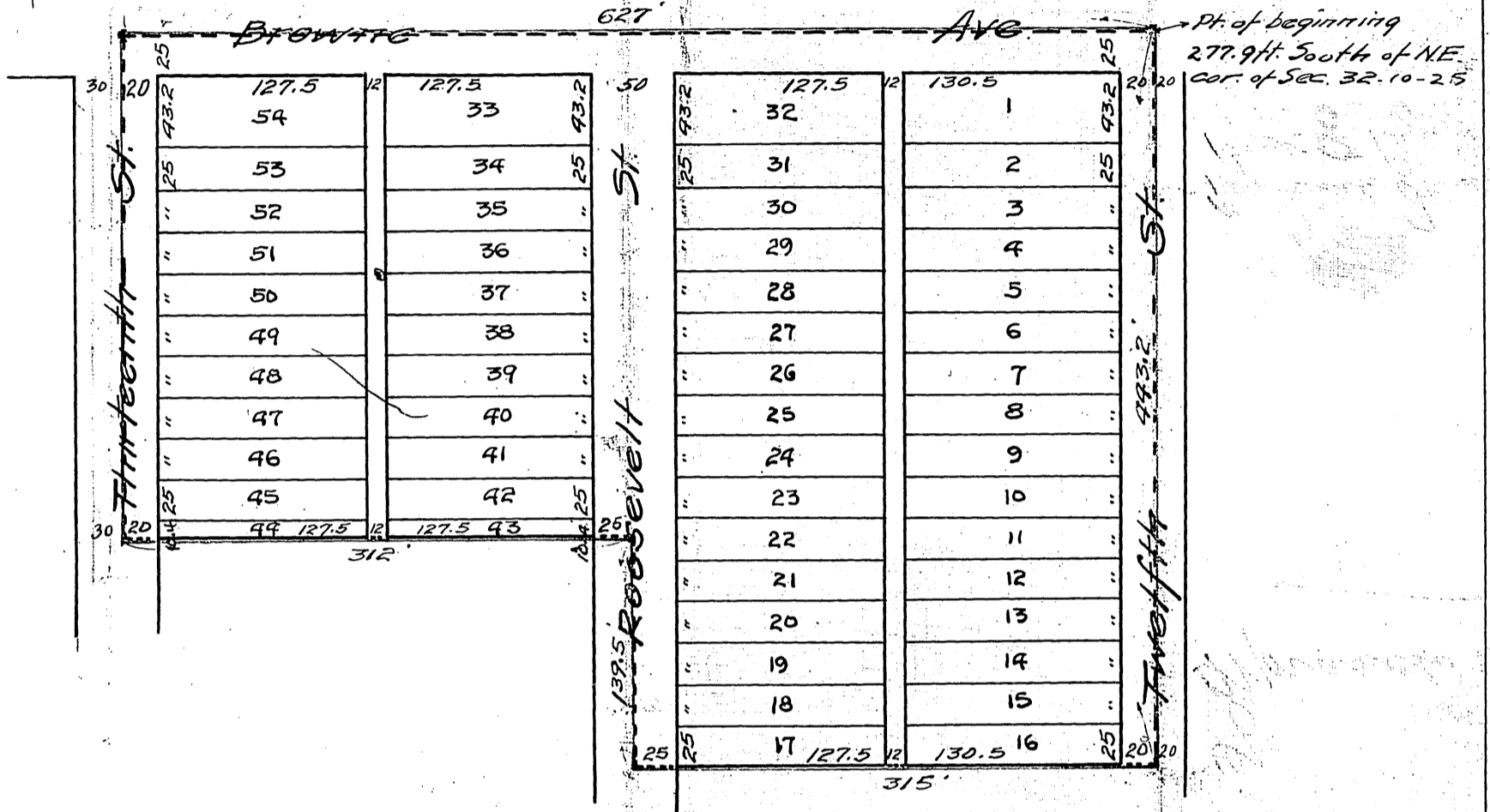


MORASCH PLACE

A SUBDIVISION IN
WYANDOTTE COUNTY, KANS.



Surveyed by P.A. Williamson
County Surveyor.



DESCRIPTION

This plot of "MORASCH PLACE" contains land in Wyandotte County, Kansas described as follows:—
 Beginning at a point 277.9 feet south of the N.E. cor. of Section 32-10-25; thence West 627 feet, thence South 303.6 feet, thence East 312 feet to the center of Roosevelt St., thence South 139.5 feet, thence East 315 feet, thence North 993.2 feet to point of beginning.

DEDICATION

The lands interdeded for sale are described by numbers as lots in "MORASCH PLACE", the dimensions of which are shown on this plat.
 The parcels reserved for Public use are Streets, Avenues, and Alleys the names, extent, and direction of which are shown on this plat.
 In "Testimony Whereof" we the undersigned owners of the above described Tract of land, have hereunto set our hands and seals this 13th day of Oct. A.D. 1922.

J.P. Morasch Seal.
Mary J. Morasch Seal.

State of Kansas } s.s.
 County of Wyandotte }

Be it remembered that on this 13th day of October A.D. 1922, before me the undersigned, a Notary Public in and for the above named County and State, came J.P.W. MORASCH and Mary J. MORASCH, his wife, who are personally known to me to be the same persons who executed the foregoing instrument and duly acknowledged the execution of the same as their own free act and deed.
 In "WITNESS WHEREOF" I have hereunto set my hand and affixed my NOTARIAL Seal, the day and year last above written.

H. Weaver
 Notary Public

My Commission Expires March 12, 1923

Approved by City Engineer

R.D. McAlpine
 City Engineer.

Approved by Board of City Commissioners
 this 13 day of October A.D. 1922
Howard Payne
 City Clerk

Approved by City Planning Commission
 this 12th day of October A.D. 1922.
Clifton Roberts
 Secretary