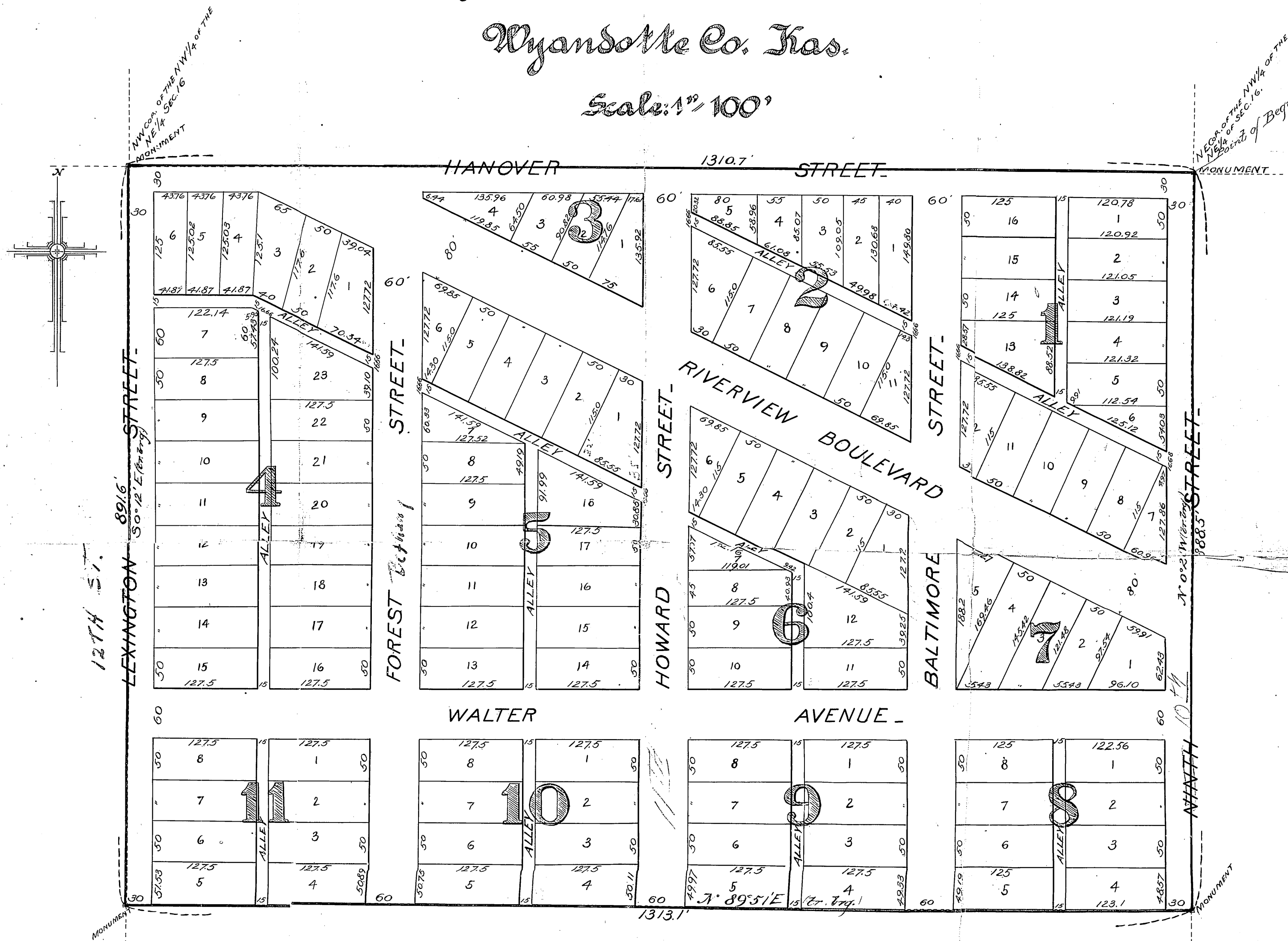


Mount Panorama.

Part of N.W. 1/4 N.E. 1/4 Sec. 16 T. 11 S. R. 25 E.

Wyandotte Co. Kas.

Scale: 1" = 100'



This plat of Mount Panorama was caused to be made by the N.W. 1/4 of the N.E. 1/4 of Section 16, Township 11 South, Range 25 East, Wyandotte County, Kansas, described as follows: Beginning at a stone monument marking the northeast corner of said N.W. 1/4. Thence west along the north line of said N.W. 1/4, 1310 7/10 feet to a stone monument marking the north-west corner of said N.W. 1/4. Thence S. 0° 12' E (true bearing) along the west line of said N.W. 1/4, 891 1/10 feet to a stone monument. Thence N. 89° 51' E (true bearing) 1313 1/10 feet to a stone monument in the east line of said N.W. 1/4. Thence N. 0° 20' W (true bearing) along the east line of said N.W. 1/4, 888 3/10 to the point of Beginning.

The lands reserved for sale are described by numbers as lots and blocks in "Mount Panorama". The parcels of ground reserved for public use are avenues, streets and alleys. The names, extents and directions of all such avenues, streets and alleys are designated on this plat; and such avenues, streets and alleys are reserved and dedicated for public purposes as such. All lots intended for sale are set forth and described by numbers in blocks. The precise length and width of each lot is marked thereon in feet and decimal parts thereof. The number of each lot is shown in small red figures and the number of each block in large blue figures.

In Testimony whereof the owners and proprietors of this land have hereunto set their hands this thirty first day of May A.D. 1887.

Louis Hammerslough
Rachel Hammerslough

STATE of MISSOURI
COUNTY of JACKSON } ss. Be it remembered that on this 31st day of May 1887 before me, a notary public, within and for said county and state, personally appeared
Louis Hammerslough and Rachel Hammerslough, wife to me personally known to be the same persons who executed the above instrument and duty acknowledged the execution of the same.
My commission as notary public will expire February 26th 1890
IN WITNESS WHEREOF I have hereunto set my hand and affixed my official seal the day and year first above written.

Charles L. Blanchard
Notary P.

State of Kansas
County of Wyandotte
Filed for Rec
2nd 1887
J. H. P.
Register

Knights & Pontecou
CIVIL ENGINEERS