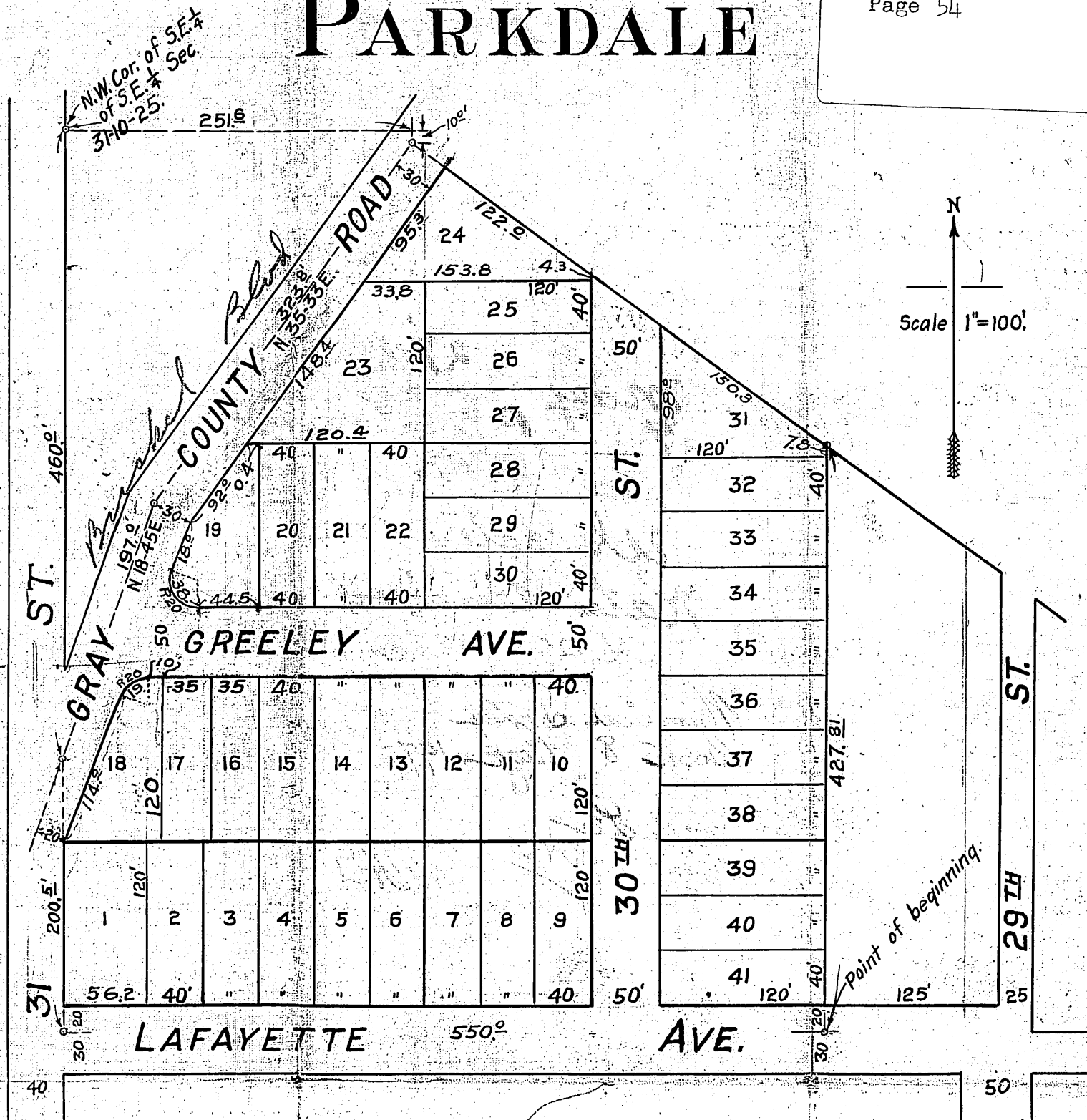


PARKDALE



This Plat of Parkdale covers land in Wyandotte County, Kansas, described as follows: Beginning at a point 550 feet East and 660.5 feet South of the North West corner of the South East quarter of the South East quarter of Section 31, Township 10, Range 25; thence West 550 feet; thence North 200.5 feet to a point in the center line of Gray County Road; thence North 18°45' East 197.0 feet along said "center line"; thence North 35°33' East 323.8 feet along said center line to a point in the center line of the County Road which is 251.6 feet East and 10.0 feet South of the North West corner of the South East quarter of the South East quarter of said Section 31; thence South 53°14' East 372.3 feet, more or less to a point 427.81 feet North of beginning; thence South 427.81 feet to the point of beginning.

The lands reserved for sale are indicated by numbers 1 to 41 inclusive, the size and dimensions of which are shown on this plat. The parcels of ground intended for public use are streets and roads, the name, extent and direction of which are shown hereon and they are hereby dedicated to the public for use as such.

In testimony whereof, the undersigned, owners of the above described lands have hereunto subscribed their names this 27th day of May A.D. 1921.

John L. Sartin
Elizabeth Sartin

STATE OF KANSAS }
 County of Wyandotte } ss.

Be it remembered that on this 27th day of May A.D. 1921, before me a Notary Public in and for the County and State aforesaid came *John L. Sartin* and *Elizabeth Sartin his wife* to me personally known to be the same persons who executed the foregoing instrument and duly acknowledged the execution of the same.

Helen Peterson
 Notary Public.

My commission expires December 1st - 1923

Approved by City Planning Commission

Approved *R. L. McAlpine*
 City Engineer

Otto Maurer
R. L. McAlpine
J. M. Hall
 (Committee on Plats)

Approved By Board of City Commissioners.

Date May 5 - 1921

Howard Payne
 City Clerk

Ref to City Eng + Legal Dept
 May 3 - 1921