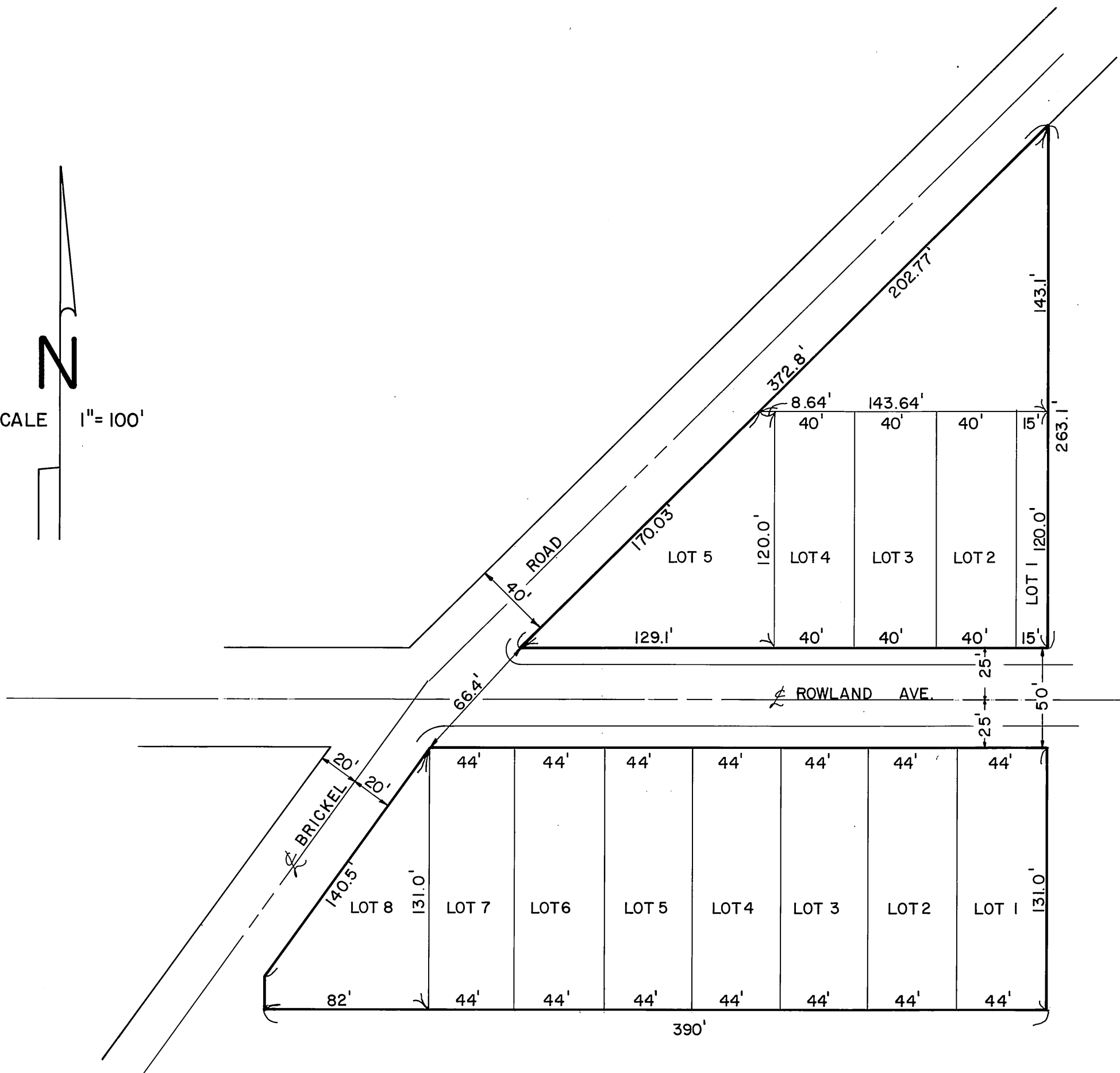
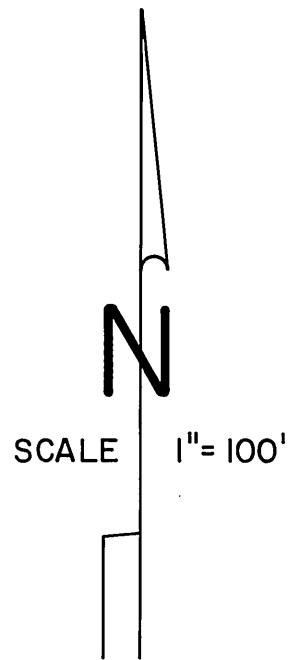


# REPLAT PARKSIDE FARMS

LOTS 23 to 28 Incl.

PARKSIDE FARMS RES L23-28

(23)



THIS PLAT WAS COPIED FROM  
A SURVEY MADE FOR MR. EDW.  
F. HENDERSON DATE: UNKNOWN.  
BY: WY. CO. MAPPING STAFF NOV. 5, 1974