

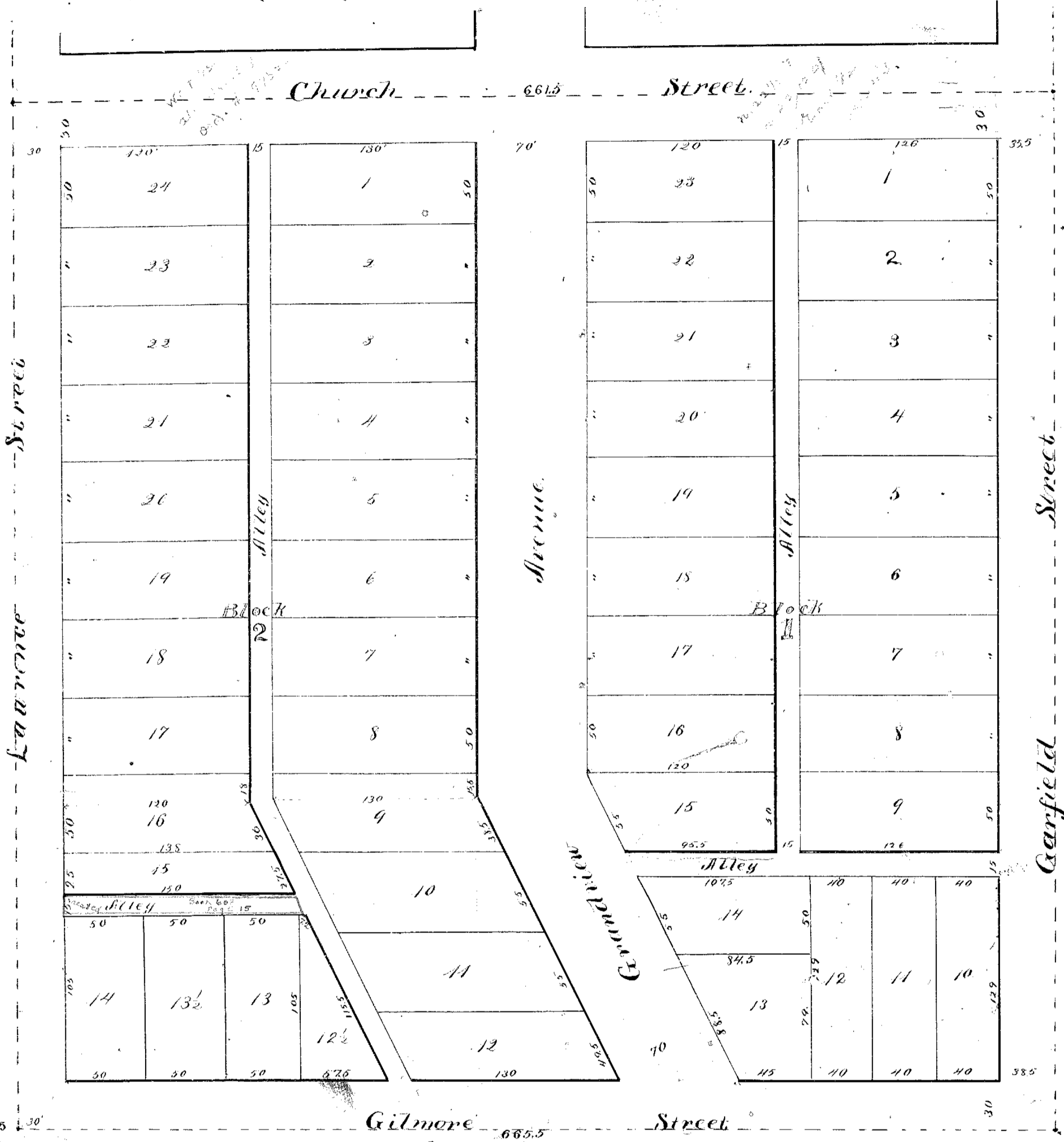
RAILROAD ADDITION

TO
ARMSTRONG,

Wyandott Co. Kansas.

Surveyed and Platted
Walter Hale, County Surveyor.

Scale:
one inch to 60 feet.



Stat. Cor. N.W. 1/4 Sec 15
T. 11 R. 25 E.

Gilmore Street
665.5
Armstrong.

The Lots in this Plat of Railroad Addition are of the size and shape shown by the figures and lines relating thereto on this Plat. The Avenues, Street and Alleys, as shown by the lines and figures relating thereto on this Plat are hereby dedicated to the public for their sole use as public High ways, but for no other purpose.

Wyandotte Kansas October 29th 1881.

Kate L. Simpson
S. N. Simpson
L. B. Simpson
W. A. Simpson

State of Kansas } ss.
County of Wyandott }

Be it remembered that on this 29th day of October A.D. 1881 before me the Register of Deeds in and for said County and State came R. L. Simpson and L. B. Simpson to me personally known to be the same persons who signed this Plat and duly acknowledged the execution of the same. In Witness Whereof I have hereto subscribed my name and affixed my official Seal the day and year last above written ~ My Comm. Expires Jan, 10th A.D. 1882.

J. S. Clark.
Register of Deeds.

State of Kansas } ss.
County of Wyandott }

This plat was filed for record
February 7th 1882 at 1:30 o'clock P.M.

W. A. Bridgens
Register of Deeds.