

RESTVIEW

A SUBDIVISION IN KANSAS CITY, WYANDOTTE COUNTY, KANSAS

SCALE = 1" = 50'

O Denotes stake driven

JUNE, 1938

KANSAS CITY, KANSAS
APPROVED BY THE CITY PLANNING COMMISSION
DATED July 11-1938

Guy A Gray
SECRETARY

KANSAS CITY, KANSAS
APPROVED BY THE BOARD OF COMMISSIONERS
DATED July 15-1938

Howard Payne
CITY CLERK

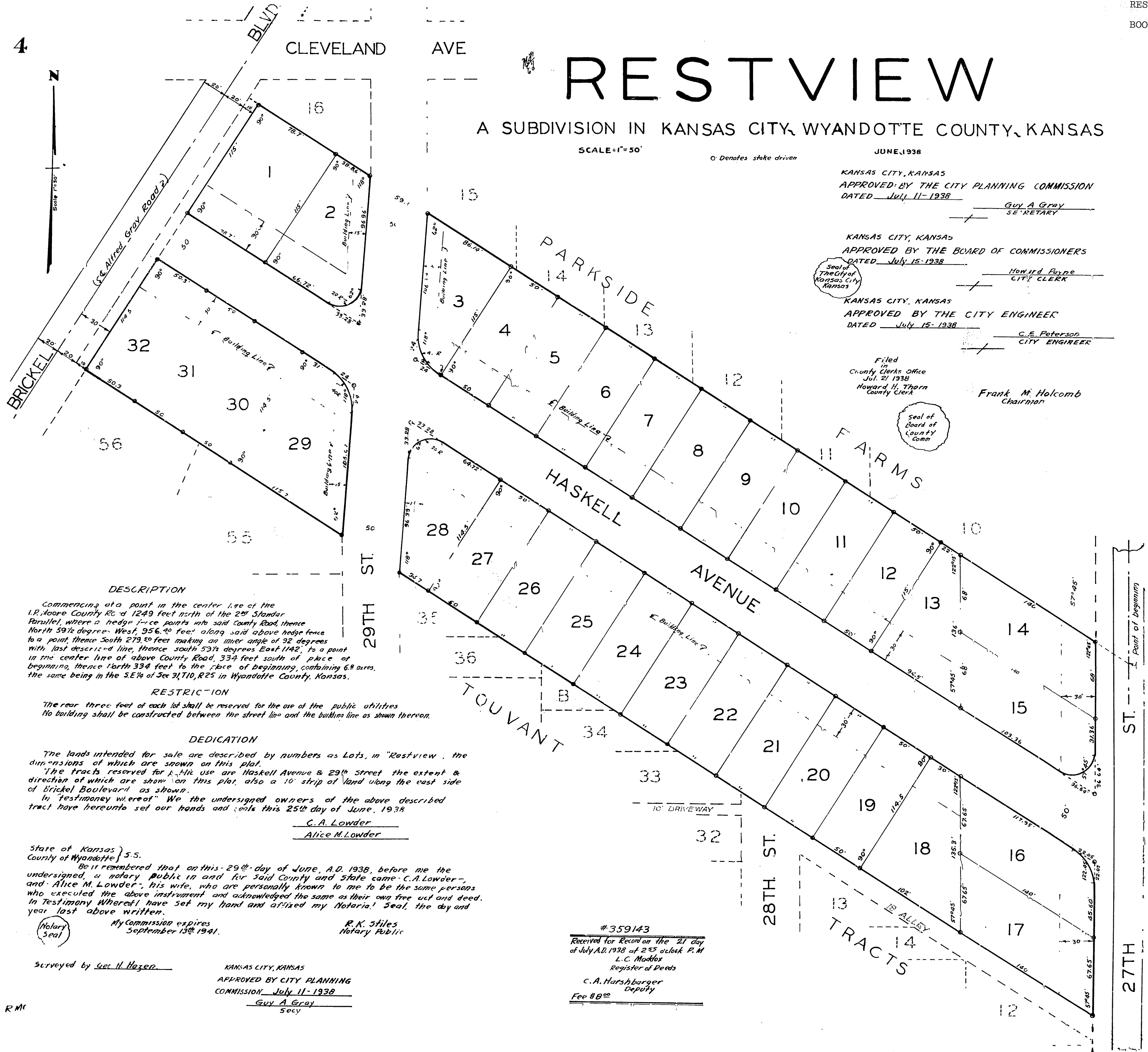
KANSAS CITY, KANSAS
APPROVED BY THE CITY ENGINEER
DATED July 15-1938

C. E. Peterson
CITY ENGINEER

Filed
in
County Clerks Office
Jul. 21 1938
Howard H. Thorn
County Clerk

Frank M. Holcomb
Chairman

Seal of
Board of
County
Comm



DESCRIPTION

Commencing at a point in the center line of the I.P. Moore County Road 1249 feet north of the 2nd Standard Parallel, where a hedge fence points into said County Road, thence North 59 1/2 degrees West, 956.40 feet along said above hedge fence to a point, thence South 279.30 feet making an inner angle of 92 degrees with last described line, thence South 53 1/2 degrees East 1142', to a point in the center line of above County Road, 334 feet south of place of beginning, thence North 334 feet to the place of beginning, containing 6.8 acres, the same being in the S.E. 1/4 of Sec 31, T10, R25 in Wyandotte County, Kansas.

RESTRICTION

The rear three feet of each lot shall be reserved for the use of the public utilities. No building shall be constructed between the street line and the building line as shown thereon.

DEDICATION

The lands intended for sale are described by numbers as Lots, in "Restview", the dimensions of which are shown on this plat.

The tracts reserved for public use are Haskell Avenue & 29th Street the extent & direction of which are shown on this plat, also a 10' strip of land along the east side of Brickell Boulevard as shown.

In testimony whereof, We the undersigned owners of the above described tract have hereunto set our hands and seals this 25th day of June, 1938

C. A. Lowder
Alice M. Lowder

State of Kansas } S.S.
County of Wyandotte }

Be it remembered that on this 29th day of June, A.D. 1938, before me the undersigned, a notary public in and for said County and State came C.A. Lowder, and Alice M. Lowder, his wife, who are personally known to me to be the same persons who executed the above instrument and acknowledged the same as their own free act and deed. In Testimony whereof I have set my hand and affixed my Notarial Seal, the day and year last above written.

Notary Seal

My Commission expires
September 13th 1941.

R. K. Stiles
Notary Public

Surveyed by Geo. H. Hazen

KANSAS CITY, KANSAS
APPROVED BY CITY PLANNING
COMMISSION July 11-1938
Guy A Gray
Secy

#359143

Received for Record on the 21 day
of July A.D. 1938 at 2:55 o'clock P.M.
L. C. Maddox
Register of Deeds

C. A. Harshbarger
Deputy
Fee \$8.00