

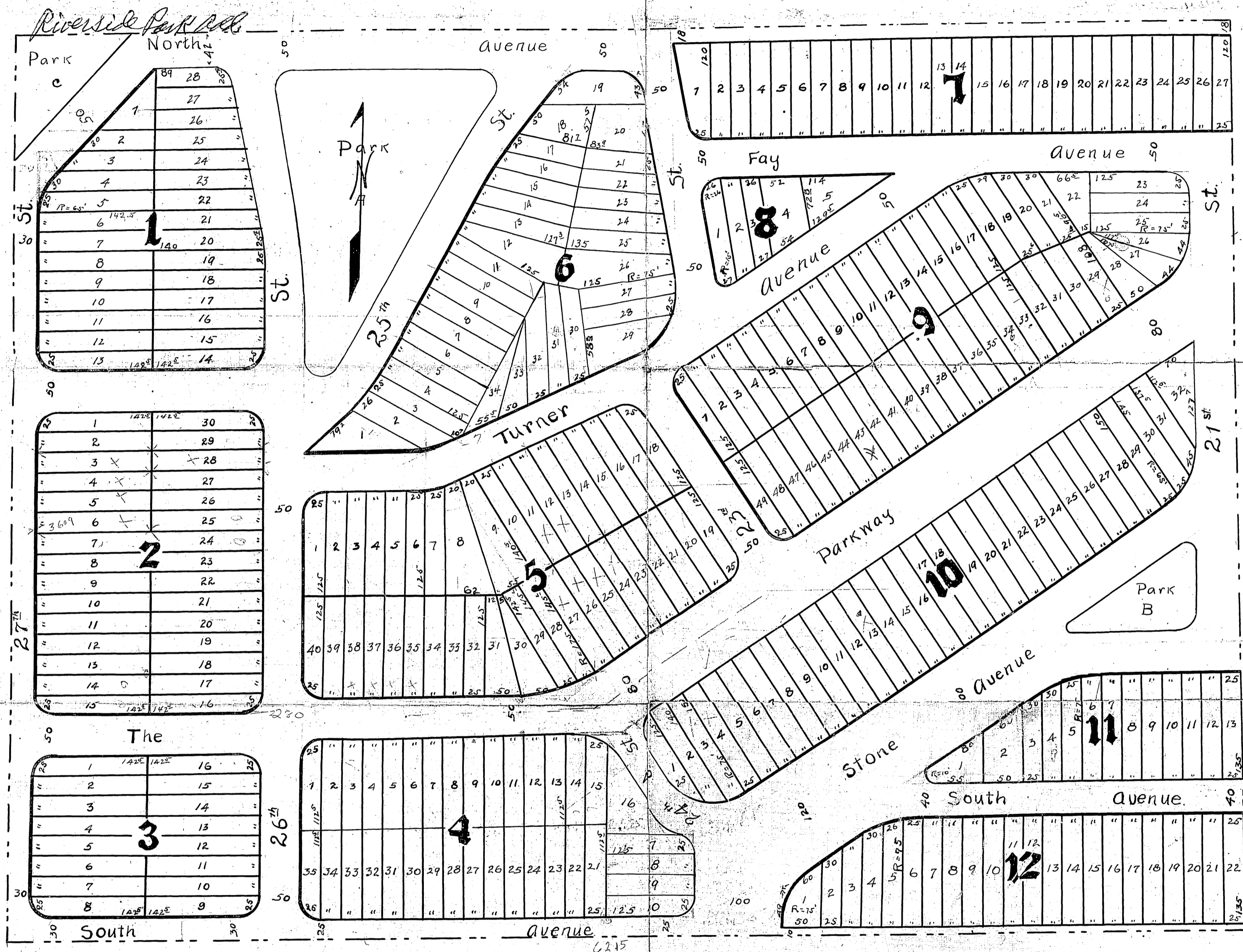
RIVERSIDE PARK

A SUBDIVISION IN

WYANDOTTE COUNTY KANSAS.

Scale 1 inch = 100 feet.

June 11th a 11
28
J. W. Sutherland
R. B. Wolf
60th Rd



This PLAT of RIVERSIDE PARK contains land in Wyandotte County described as follows:- The West 1540 feet of the following described lands:- The South 40 poles of the N.W. 1/4 and the North 28 poles of the S.W. 1/4 of Sec. 29, Twp 10 R. 25.

The lands reserved for sale are designated by numbers as lots and blocks in RIVERSIDE PARK.

The lands reserved for public use are Streets Avenues and Alleys; The names, extent and direction of which are shown on this plat and are hereby dedicated to public use as such.

In testimony whereof the undersigned owners of the above described lands have hereunto set their hands and seals this seventh day of June, A.D. 1910

The Kansas City University
By *J. E. Peterson* President
J. H. Knight Secretary

STATE OF KANSAS } ss.
COUNTY of WYANDOTTE

Be it remembered that on this seventh day of June, A.D. 1910, before me the undersigned, a Notary Public in and for the said county and state came *J. E. Peterson* the president and *J. H. Knight* the Secretary of The Kansas City University a corporation organized under the laws of the State of Kansas, and who are personally known to me to be such officers of said corporation and are the same persons who executed the foregoing plat and dedication and acknowledged the same to be the official act of said corporation and further acknowledged the same to be their free act and deed as such officers of above named corporation.

In testimony whereof I have hereunto set my hand and affixed my Notarial seal the day and year last above written.

W. A. Morris - Notary Public

My commission expires April 21st 1912