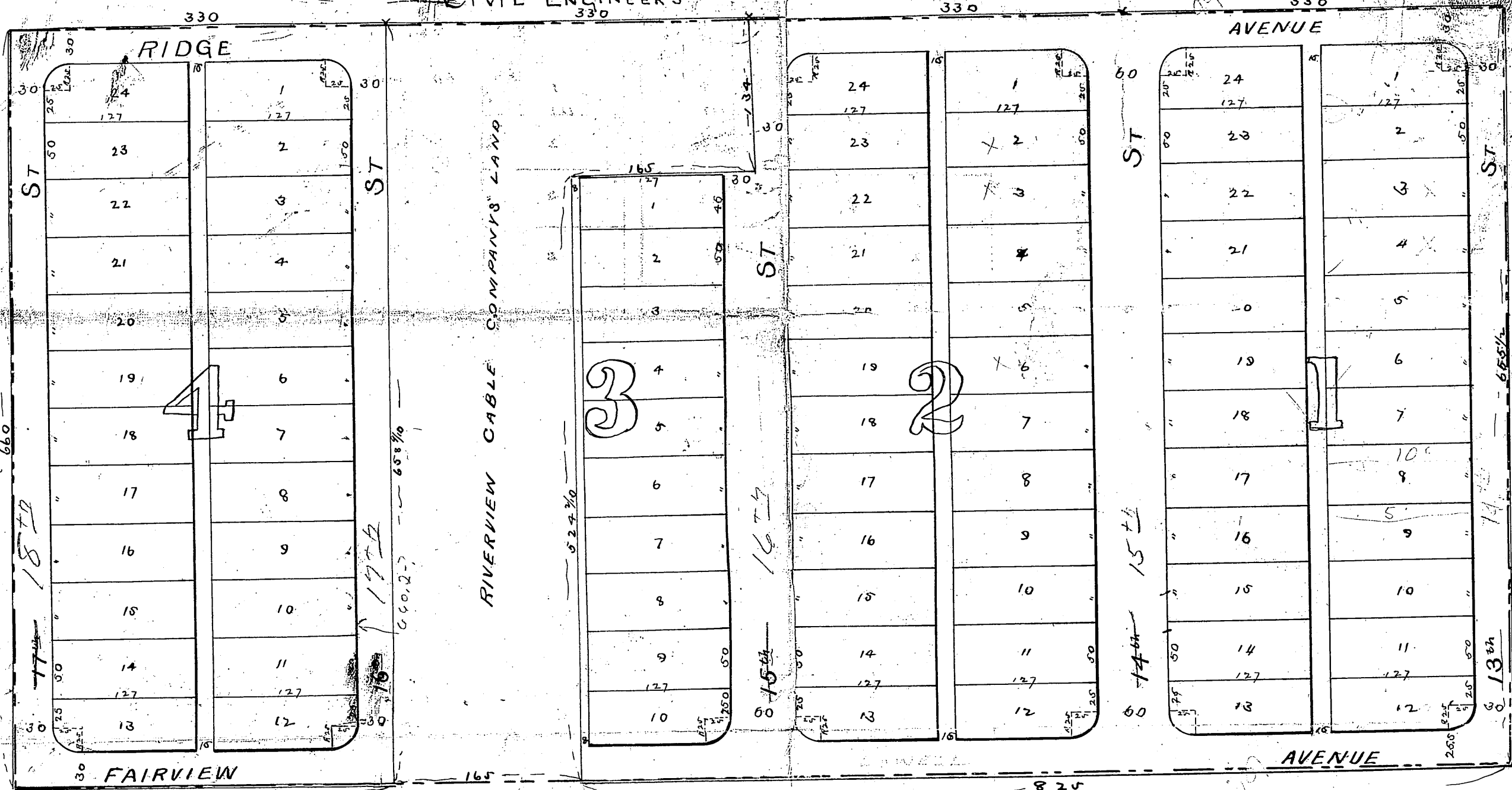


# RIVERVIEW HEIGHTS

LASLEY & BOEKE

CIVIL ENGINEERS

SCALE 1 INCH = 100 FEET



This Plat of Riverview Heights covers land in Wyandotte County Kansas true bounded to wit Commencing at the North West corner of section sixteen (16) Town eleven (11) Range twenty five (25) thence South six hundred and sixty (660) feet thence East three hundred and thirty (330) feet thence North six hundred and fifty eight and nine tenths (658.9) feet thence West three hundred and thirty (330) feet.

Also commencing at a point six hundred and sixty (660) feet East of the North-west corner of aforesaid section sixteen (16) thence South one hundred and thirty four (134) feet thence West one hundred and sixty five (165) feet thence South five hundred and twenty four and two tenths (524.2) feet thence East eight hundred and twenty five (825) feet thence North six hundred and fifty four (654) feet thence West six hundred and sixty (660) feet to place of beginning.

The lands owned for sale are described by numbers as blocks and lots in Riverview Heights. The blocks being numbered with large blue figures and lots with small black figures. The parcel of ground in the subdivision reserved for Public use as Streets and Alleys.

The names extent and direction of all such Streets and Alleys are designated on Plat and such Streets and Alleys are reserved and dedicated for Public purpose as such. All lots intended for sale are set forth and described by numbers in blocks. The precise lengths and widths of each lot in feet and decimal portions thereof is set forth on this Plat in small black figures.

In testimony whereof the Interstate Investment Company Proprietors of said Riverview Heights caused this Plat to be signed by its President and Secretary and its Common and Corporate Seal hereunto affixed this 2nd day of May 1887.

J. Reynolds President  
M. C. Gillham Secretary

State of Missouri }  
County of Wyandotte } ss  
Jackson Br I remembered that on this fourth day of May 1887 before the undersigned a Notary Public within and for said County and State came James S Reynolds President and M. C. Gillham Secretary of Interstate Investment Company and to me personally known to be such President and Secretary and all the same persons whose names are subscribed to the foregoing instrument of writing as such and acknowledged that they executed the same as the act and deed of said Interstate Investment Company by order of its Board of Directors for the use and purposes herein mentioned. That the seal affixed by them to said instrument is the Common and Corporate Seal of said Company and was affixed by themselves by order of said Board of Directors.

In witness whereof I have hereunto set my hand and affixed my official seal the day and year first above written

Francis W. Craig  
Notary Public  
Wyandotte County Missouri  
Jackson

My term of Office and Commission expires on the 6 day of May 1890.

State of Kansas } ss  
Wyandotte County }

Filed for Record May 5 1887  
2:45 o'clock P.M.  
M. Bridgus Register of Deeds