

SAGE PLACE No.2

A SUBDIVISION IN THE SOUTHEAST 1/4 OF THE SOUTHWEST 1/4 OF SECTION 28, TOWNSHIP 11, RANGE 25, WYANDOTTE COUNTY, KANSAS.

This is a resurvey of that part of CHARLROE SUBDIVISION lying North and East of SAGE PLACE; and also a subdivision of that part of the S.E. 1/4 of the S.W. 1/4 of Sec. 28-11-25 lying North and East of CHARLROE SUBDIVISION except therefrom all of Lots 41 and 42 of said CHARLROE SUBDIVISION. Reference being had to plats of CHARLROE SUBDIVISION and of SAGE PLACE as recorded at the Court House of Wyandotte County, Kansas.

Beginning at the N.E. corner of the S.E. 1/4 of the S.W. 1/4 of Sec 28-11-25, thence S. 0° 11' 43" W. along the East line of said 1/4, 1/4 Sec. 1322.40 feet to the S.E. corner of said 1/4, 1/4 Sec.; thence N. 89° 56' W. 171.30 feet; thence N. 0° 01' E. 270.0 feet along the East line of Lots 50, 51 and 52 of SAGE PLACE; thence N. 45° 36' W. 200.0 feet; thence N. 76° 56' 38" W. 228.0 feet; thence N. 43° 39' 53" W. 294.0 feet; thence West 123.70 feet; thence North 336.84 feet to the North line of Springhorn Road as established; thence N. 64° 56' 56" W. 36.68 feet; thence on a curve to the right with a radius of 263.0 feet a distance of 81.0 feet; thence N. 47° 18' 10" W. 74.60 feet; thence on a curve to the right with a radius of 225.0 feet a distance of 95.90 feet; thence N. 22° 52' 55" W. 155.28 feet to the North line of said 1/4, 1/4 Sec.; thence N. 89° 45' 09" E. along the North line of said 1/4, 1/4 Sec. 1137.21 feet to point of beginning.

The undersigned proprietor of the above described tract of land has caused the same to be subdivided in the manner shown on this plat, which plat and subdivision shall hereafter be known as: SAGE PLACE No. 2.

The Avenues and Roads shown on this plat and not heretofore dedicated to public use for avenue or road purposes are hereby so dedicated.

An easement is hereby granted to enter upon the five (5) rear or side feet of each lot and use same for the erection and maintenance of poles and wires for telephone and electric lights, and for the building and maintenance of sewers and the laying and maintenance of water pipes and other public utilities.

In witness whereof the Sage Land Company has heretofore caused its name to be subscribed by its President, and its Corporate Seal to be hereto affixed, attested by its Secretary, by order of its Board of Directors, this 18 day of June 1947

Seal:

Attest: [Signature]
Secretary.

Sage Land Company:
By: [Signature]
President

State of Missouri }
County of Jackson } S.S.

Be it remembered that on this 18 day of June 1947 before me a Notary Public in and for the above named State and County came W. R. Stanley to me personally known, who being by me duly sworn did say that he is the President of Sage Land Company, a Corporation, and that the seal affixed to the foregoing instrument is the Corporate seal of said Corporation and that said instrument was signed, sealed in the behalf of said Corporation by authority of its Board of Directors, and said W. R. Stanley acknowledged said instrument to be the free act and deed of said Corporation.

In witness whereof, I have hereunto set my hand and affixed my notarial seal at my office in Kansas City, Kansas the day and year above written.

[Signature]
Notary Public in and for
Jackson County, Missouri.

My commission expires: December 6 1950

July 15 1947

Approved by Wyandotte County Planning Board.

Attest: [Signature] Chairman
Sec

July 21 1947

Approved by the Board of County Commissioners of Wyandotte County, Kansas.

Attest: [Signature] Chairman
Co. Clerk

June 17 1948

Approved by the Wyandotte Court Engineer:

[Signature]
Co. Eng.

July 22 1947

Approved by City Engineer, Kansas City, Kansas

[Signature]
City Engineer

July 16 1947

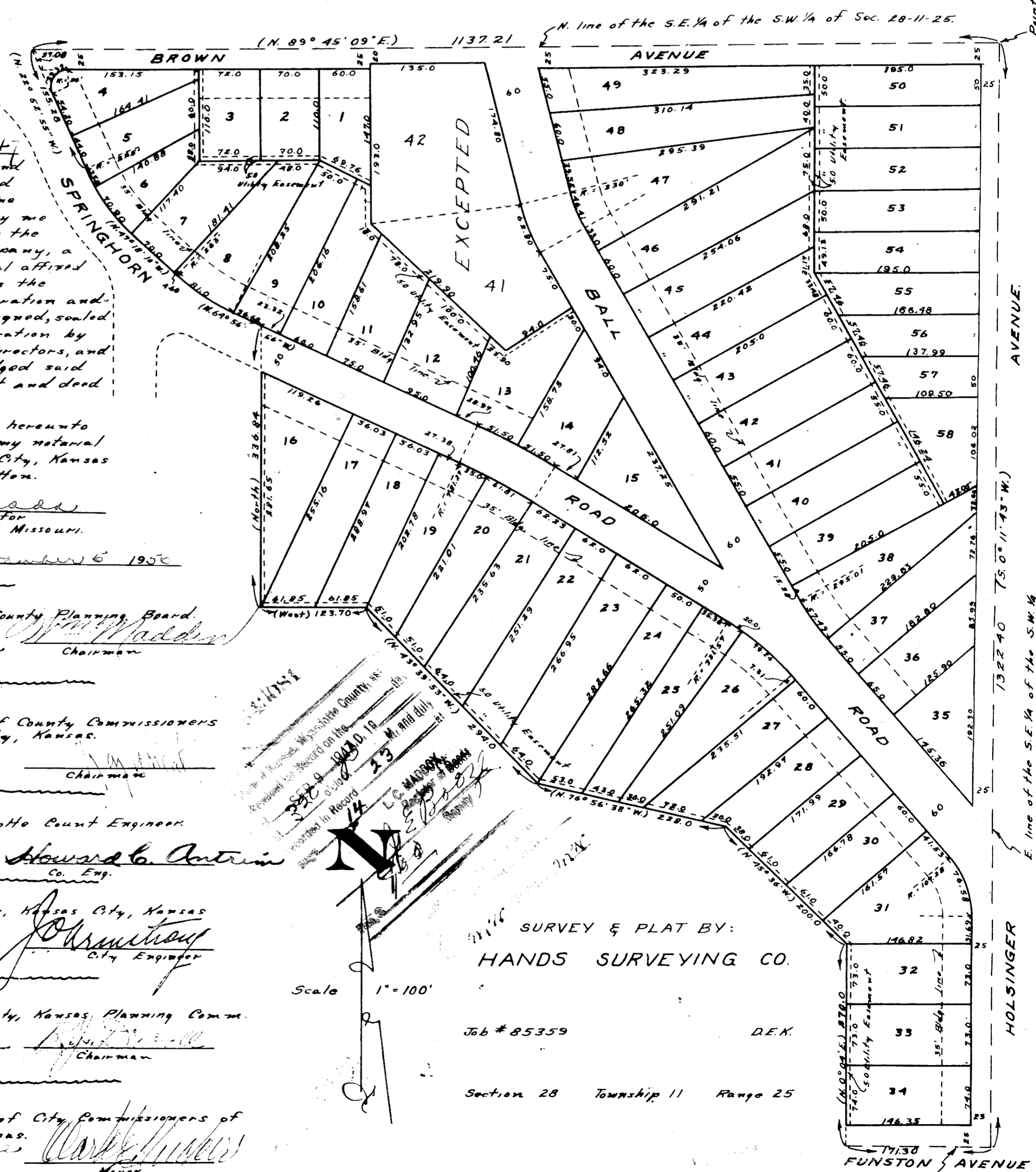
Approved by The Kansas City, Kansas Planning Comm.

Attest: [Signature] Chairman
Secretary

July 22 1947

Approved by the Board of City Commissioners of Kansas City, Kansas.

Attest: [Signature] Mayor
City Clerk



Scale 1" = 100'

SURVEY & PLAT BY:
HANDS SURVEYING CO.

Job # 85359 D.E.K.

Section 28 Township 11 Range 25

Point of Beginning

AVENUE

ROAD

ROAD

ROAD

HOLSINGER AVENUE

(N. 89° 56' W)