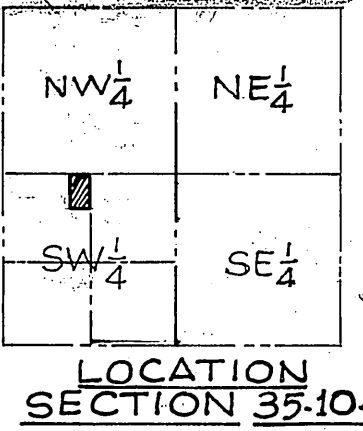


523653
623653
State of Kansas, Wyandotte County, ss:
Received for Record on the 16th day of Jan A.D. 1960
at 9:20 o'clock P.M. and duly recorded in Record 23
L. C. MADDOX,
Register of Deeds

Shamrock Acres No 2

a subdivision of land of a part of the Northwest Quarter (NW $\frac{1}{4}$) of the Southwest Quarter (SW $\frac{1}{4}$) of SECTION-35, TOWNSHIP-10, -RANGE-24 in Wyandotte County, Kansas.



SURVEYED BY
BUFORD AND ASHELFORD
LAND SURVEYORS
KANSAS CITY, KANS. ~ PLATTE CITY, MO.
BY: *Allen D. Ashelford*
ALLEN D. ASHELFORD

Description

Shamrock Acres No. #2, a subdivision of a part of the Northwest quarter (NW $\frac{1}{4}$) of the Southwest quarter (SW $\frac{1}{4}$) of Section 25, Township 10, Range 24, Wyandotte County, Kansas being more particularly described as follows:
Beginning at the Northeast corner of said quarter/quarter section; thence South 0° 06' -20" East and along the East line of said quarter, quarter section, 528.0 feet; thence South 89° 51' West, parallel with the North line of said quarter, quarter section, 297.0 feet; thence North 0° 06' -20" West, parallel with the East line of said quarter, quarter section, 528.0 feet; to a point in the North line of said quarter, quarter section; thence North 89° 51' East and along the North line of said quarter, quarter section, 297.0 feet to the point of beginning.

Dedication

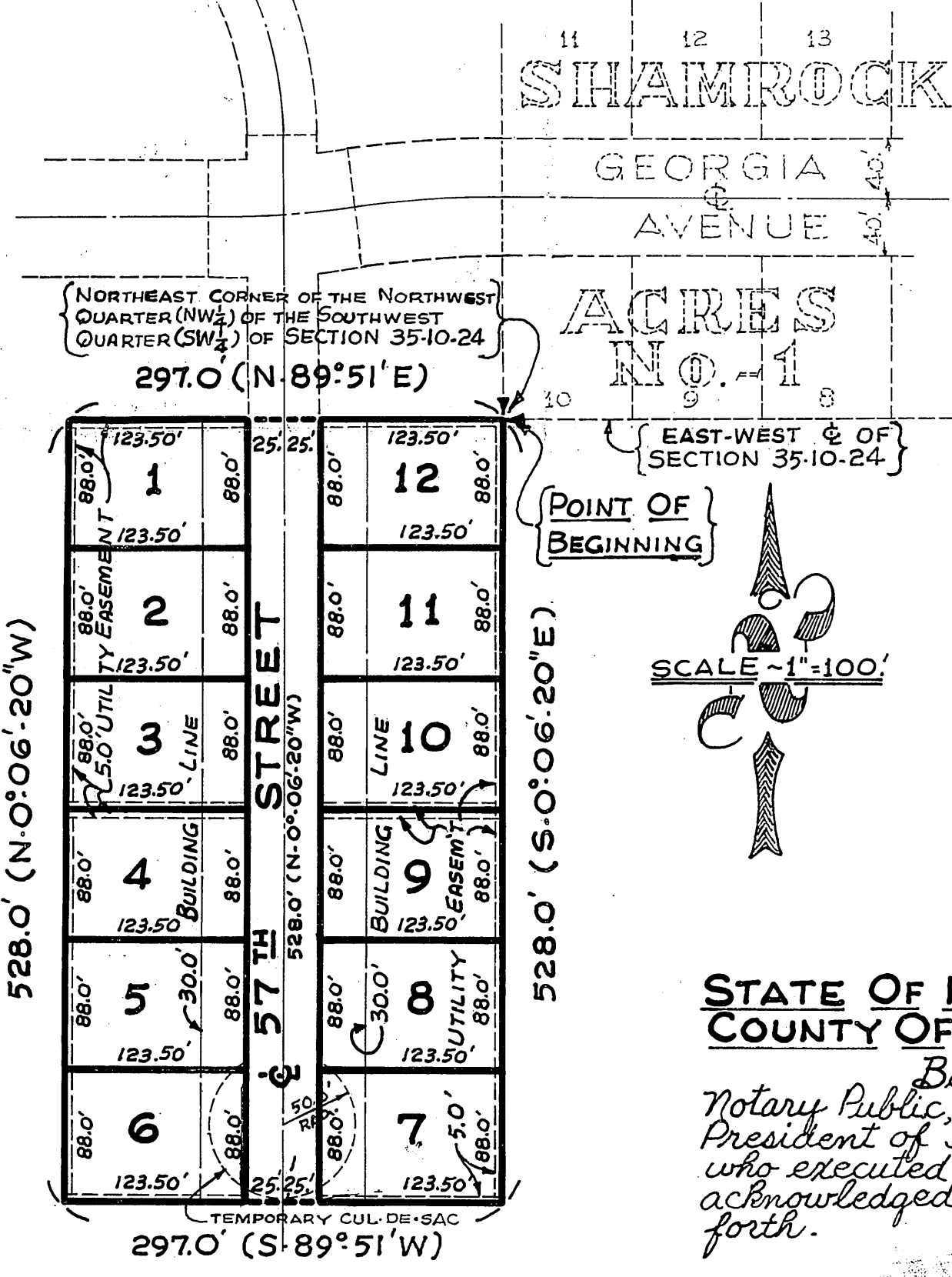
The undersigned proprietors of the above described tract of land has caused the same to be subdivided in the manner as shown on the accompanying plat which subdivision and plat shall hereafter be known as ~
SHAMROCK ACRES NO. 2

The roads, streets and public ways as shown on this plat and not heretofore dedicated to public use as such are hereby so dedicated.
An easement or license is hereby granted to Wyandotte County, Kansas and to all public utility companies duly incorporated and existing under the laws of the State of Kansas, to enter upon, construct and maintain poles, wires, anchors, pipes, conduits, sewers, etc., upon, over, and under these areas outlined and designed on this plat as "Utility Easements" or "U/E". All easements unless specified otherwise on this plat are 10 feet wide, 5 feet on each side of a lot line. All anchor easements are 10 feet wide and 20 feet long and are designated hereon as "Anchor Easements" or "A/E".

IN TESTIMONY WHEREOF: ~
Shamrock Inc., has by the authority of its Board of Directors caused this instrument to be executed by its President, and its corporate seal to be hereto affixed by its Secretary this 10 day of Aug, 1960.

Richard D. Shannon
RICHARD D. SHANNON (PRESIDENT)

ATTEST: *Gwendolyn M. Shannon*
GWENDOLYN M. SHANNON (SECRETARY)



STATE OF KANSAS } S.S.
COUNTY OF WYANDOTTE }

Be it remembered that on this 10th day of August, 1960, before me the undersigned, a Notary Public, duly commissioned, in and for the County and State aforesaid, came, a Richard D. Shannon, President of Shamrock Inc., a corporation of the State of Kansas personally known to me to be the same person who executed as such officer the foregoing instrument of writing in behalf of said corporation and he duly acknowledged the execution of the same for himself and for said corporation for the uses and purposes herein set forth.

IN WITNESS WHEREOF: ~
I have hereunto set my hand and official seal on the day and year last above written.
My Commission expires ~
DATE: January 14, 1962

Approved by Wyandotte County Planning Board 6-25, 1960
Joe J. Perkins CHAIRMAN
ATTEST: *T.B. Kullback*

Approved by Wyandotte County Commissioners 12-12, 1960
Paul W. White CHAIRMAN
ATTEST: *George J. Groneman*

Approved by Wyandotte County Acting Engineers July 26, 1960
Jim R. Stroy ACTING COUNTY ENGINEER
Approved by Kansas City, Kansas Commissioners 12-12, 1960
Paul W. White MAYOR
ATTEST: *George J. Groneman* City Clerk
Approved by Kansas City, Kansas Engineer AUGUST 29, 1960
Howard C. Antrim CITY ENGINEER

