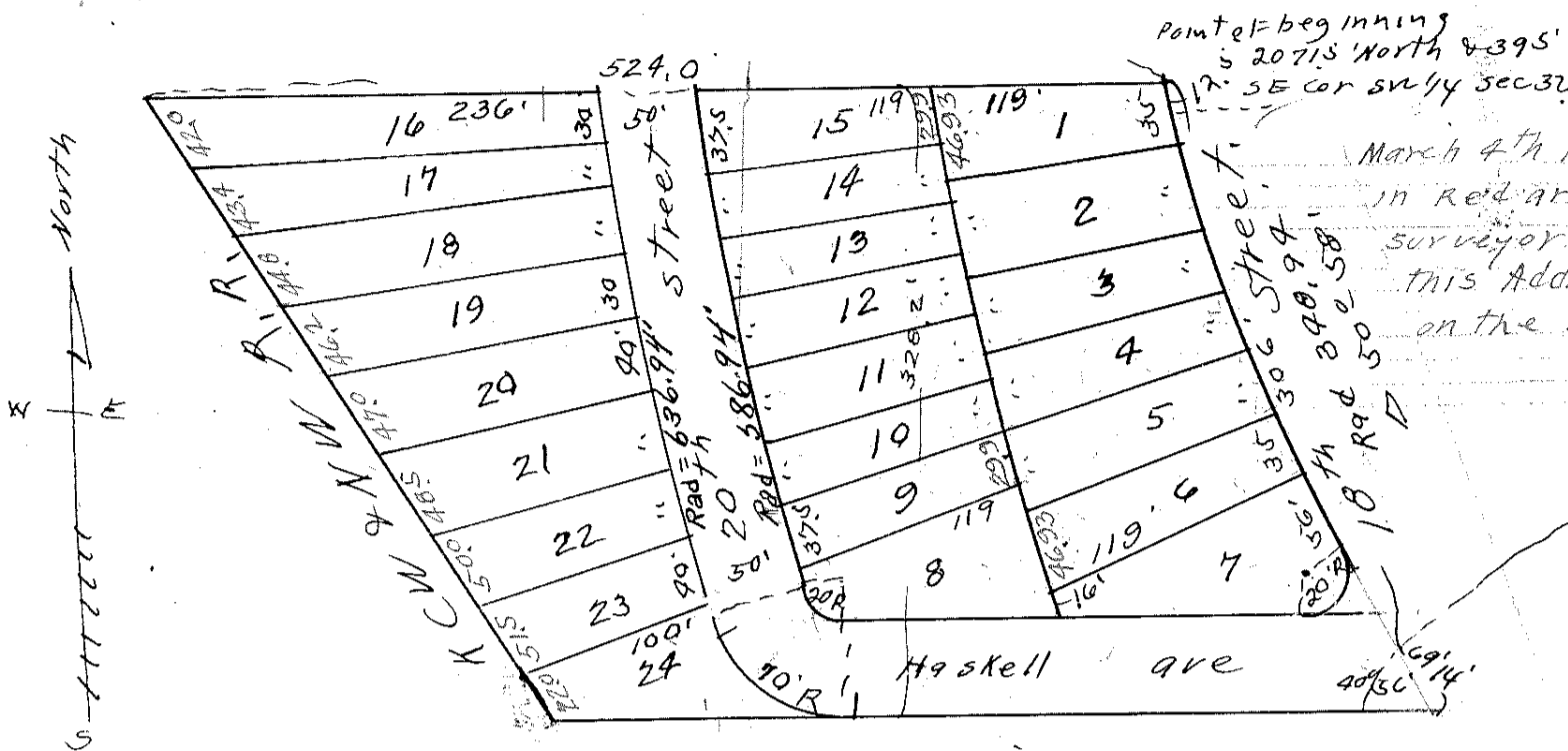


#261593
H.C.J.

Trulls Addition An Addition In Kansas City Kansas

Scale 1" = 100'

F.S. WILSON
ENGR.



March 4th 1927, the figures shown in red are furnished by Wm. Barclay surveyor who set the stakes for this Addition. They were not shown on the Filing Plat. Geo. H. H.

Description

this Plat of Trulls Addition covers a tract of land in Wyandotte County Kansas, being a part of Tract No 8 in the subdivision of the Klam Estate, described as follows Beginning at a point 2071.5 feet North and 395 feet West of the South East corner of the south west quarter of section 32-10-25, thence south along the west line of 18th St to a point of Tangent, thence an arc curve to the east having a radius of 340.94 feet; 306 feet, thence south easterly, tangent to last described curve 69.14 feet, thence west at an angle of 40° 56' to the easterly line of the Kansas City Wyandotte and North West term RRs Right of Way, thence Northwest on easterly line of KCN & NW RRs R of Way to a point due west of beginning thence East 324 feet to the Point of beginning.

Dedication

The parcels of land reserved for sale are shown hereon as lots the exact dimensions of each being shown hereon and they shall hereafter be known as lots in Trulls Addition, the lands shown as streets and avenues are dedicated to the Public for use as such.

In testimony whereof the undersigned owners of the before described tract have hereunto subscribed their names this 23rd day of April AD 1926.

Emery C. Trull
Elma P. Trull,

State of Kansas
County of Wyandotte } S.S.

Be it remembered that on this 23rd day of April AD 1926 before me a notary public in and for said County and State came Emery C. Trull and Elma P. Trull who are personally known to me to be the same persons who executed the foregoing instrument of writing and duly acknowledged the execution of the same.

In testimony whereof I have hereunto set my hand and affixed my notarial seal the day and year last above written.

Flossie Stockmann
notary public

Seal

My commission expires Sept 12-1928.

State of Kansas
City of Kansas City } S.S.

I Howard Payne city clerk of the city of Kansas City Kansas, hereby certify that the within plat was approved by the board of commissioners this 30th day of June A.D. 1925, in witness whereof I have hereunto set my hand and affixed the official seal.

Howard Payne
city clerk.

Approved

R.L. McAlpine
city Engineer.

Approved by city Planning Commission
Clifton Roberts
secretary,

Received for record on the 26 day of April AD 1926
at 2 o'clock P.M.

James Stewart
Register of deeds
by Kate Grindrod
deputy.

Seal of Kansas City Kansas