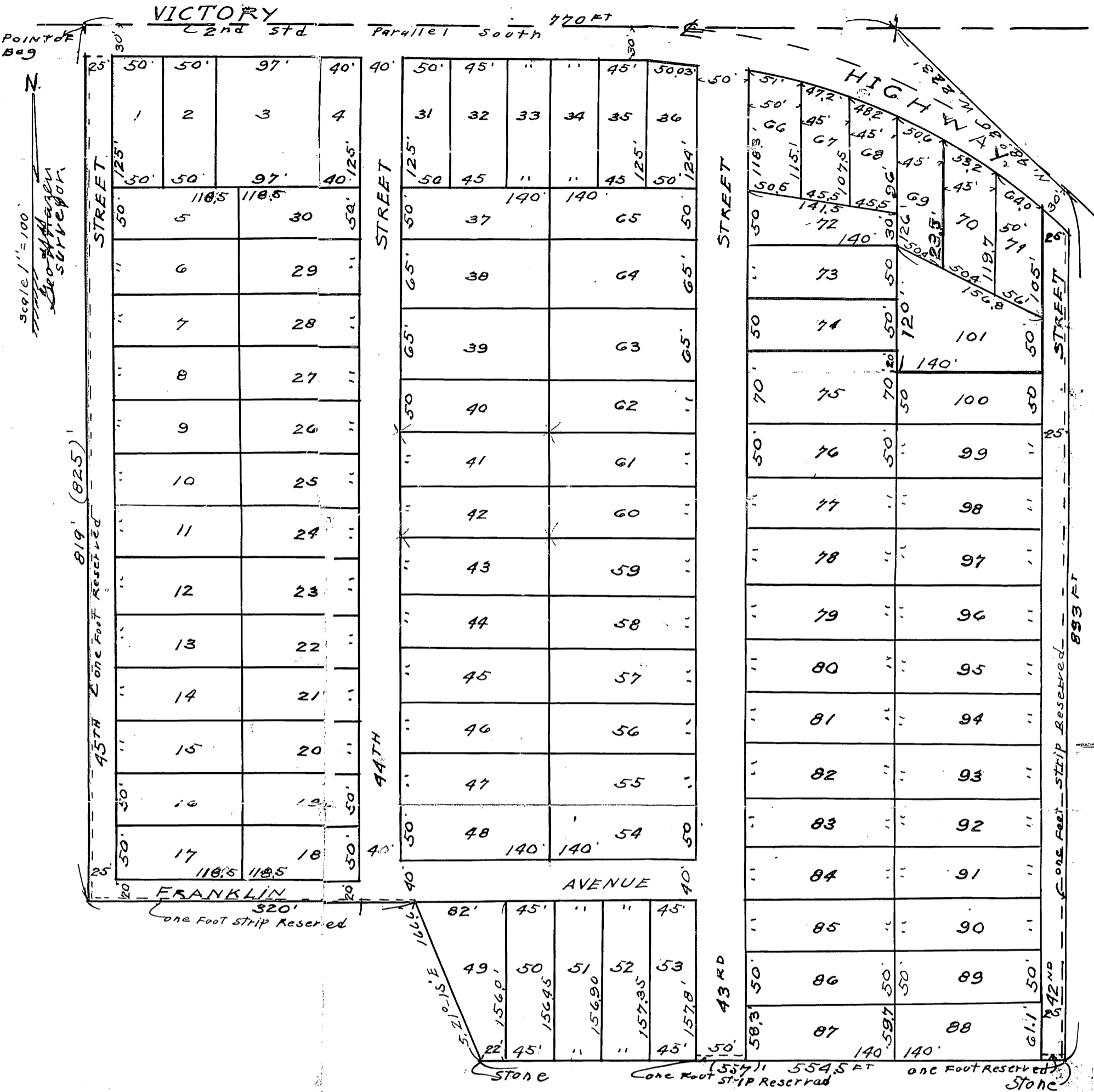


VICTORY HEIGHTS

A SUBDIVISION OF LAND IN THE N.W. QUARTER
G-T-11-R25 IN WYANDOTTE COUNTY KANSAS.



Description

This Plat of Victory Heights Contains the following described Land in Wyandotte County Kansas. Beginning at a Point 268.3 feet east of the N.W. corner of Section 6, Township 11, Range 25, thence South 819 feet thence East 320 feet, thence South 21°15' East 166.6 feet, thence East 554.5 feet, thence North 833 feet, thence North 48°30' West 223 feet, thence West 770 feet to the beginning Containing 19⁴/₁₀₀ Acres With Appurtenances.

Dedication

The Lands Reserved For Sale Are shown Upon This Plat as Numbered Lots, the Size of Each being shown and they shall hereafter be known as lots in Victory Heights. The lands reserved for public travel are shown hereon as streets and Avenues, and they are hereby dedicated as such, except a strip of land one foot wide where indicated is reserved until an equal amount of Land adjoining said streets is given for public travel. In testimony Whereof we the undersigned owners of the above described land have hereunto set our hands this day of

Albert L. Hessel Seal
Luella Hessel Seal

State of Kansas
County of Wyandotte

Be it Remembered that on this 2nd day of MARCH AD 1926. before me the undersigned a Notary Public in and for said County And state came Albert L. Hessel and Luella Hessel Who are Personally Known to me to be the Same Persons Who executed the foregoing instrument of Writing And duly acknowledged the Execution of the same as their own Free act and deed In Witness Whereof I have hereunto Set my hand And Affixed my notarial Seal the day and year last Above Written.

My Commission Expires April 2nd 1927.

Tena Poling,
Notary Public.