

# Walker's Addition

TO WYANDOTT CITY PART I

Part 1 of Walker's Addition to Wyandott City is situated on the North side of said city and is bounded and described as follows viz. Commencing at a point 385 1/10 feet west and 126 1/2 feet north of the north east corner of the south east quarter of Section 3 Township 11 South and range 25 east of the 6th Principal Meridian Wyandott County Kansas thence North 516 feet thence west 1170 feet thence South 516 feet and thence east 1170 feet to the place of beginning containing 13 85/100 acres of land.

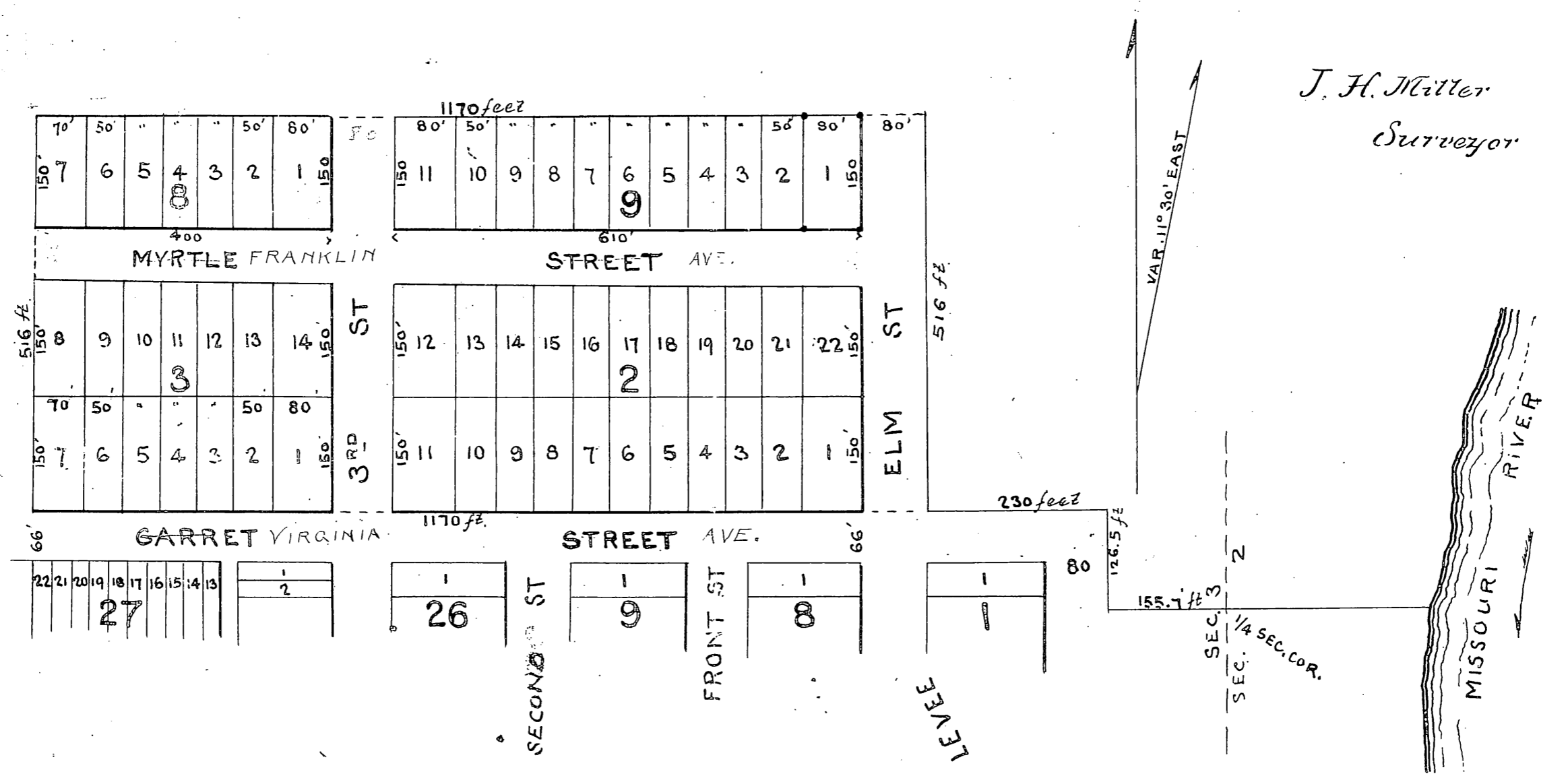
Myrtle Street is 66 feet wide and extends east and west Third Street and Elm St. are each 80 feet wide and are the continuations of the same streets from Wyandott City. Garret Street was laid out by the Wyandott City Company 60 feet wide six feet more has been added making its width 66 feet. Block 2 is 610 feet east and west by 300 feet north and south. Block 3 is 400 feet east and west and 300 feet North and South. Flat block 8 is 400 feet by 150 feet and half Block 9 is 610 feet by 150 feet. Lots Nos 2 to 10 and 13 to 21 in block 2 Lots 2 to 6 and 9 to 13 in block 3 Lots 2 to 6 in block 8 and lots 2 to 10 in block 9 are all inclusive 50 feet by 150 feet. Lots -1-11-12 and 22 in block 2 Lots 1 and 14 in block 3 Lot 1 in block 8 and lots 1 and 11 in block 9 are all 80 feet by 150 feet and lots 7 and 8 in block 3 and lot 7 in block 8 are each 70 feet by 150 feet. Myrtle Street - 3rd Street - Elm St. and the additional 6 feet hereby added to the width of Garret Street all of which are fully shown on the above plat are hereby released and set apart for public use. In testimony whereof we Matthew R. Walker and Lydia B. Walker have hereunto set their hands and seals this 16th day of April A.D. 1860

Executed in presence of Jno. H. Mitter

Matthew R. Walker (SEAL)  
Lydia B. Walker (SEAL)

Territory of Kansas }  
Wyandott County } S.S. On this sixteenth day of April A.D. 1860 before me Jno. H. Mitter a Notary Public in and for said County personally appeared Matthew R. Walker and Lydia B. Walker to me personally known to be the identical persons, who executed the foregoing instrument as parties thereto and acknowledged the same to be their voluntary act and deed for the uses and purposes therein mentioned. In witness whereof I the said notary have hereunto set my hand and affixed my official seal at the City of Wyandott the day and year aforesaid.

Jno. H. Mitter  
NOTARY PUBLIC



A true copy of the original plat  
J. H. Mitter Civil Engineers

Recorded April 17 A.D. 1860 at 10 A.M.

Carroll July 1890

HENRY