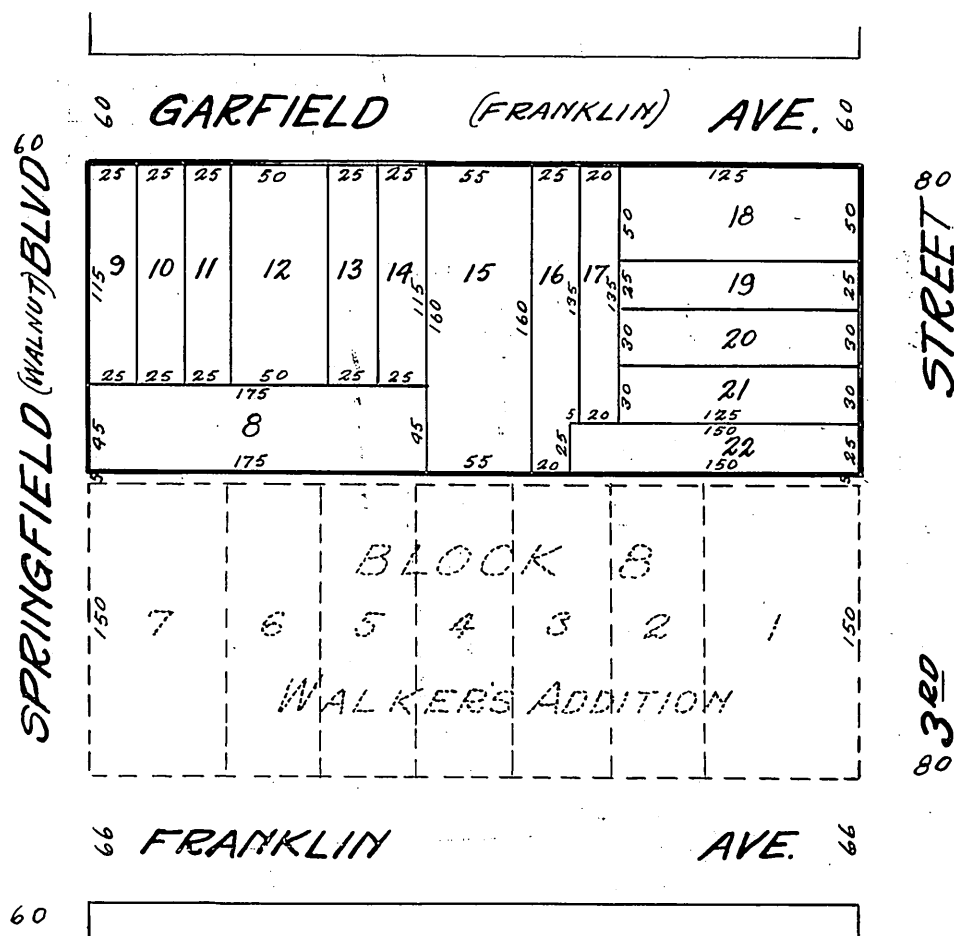


# ANNEX TO BLOCK 8 WALKERS ADDITION

Surveyed by - *P.A. Williamson*  
County Surveyor



Scale 1" = 100'

## DESCRIPTION

This plat of "Annex to Block 8 Walkers Addition" contains land in Kansas City, Wyandotte County, Kansas described as follows - Beginning on the west line of 3<sup>rd</sup> Street at a point 5 ft. north of the northeast corner of Lot 1 Block 8 Walkers Addition, thence north 160 ft. to the south line of Garfield Avenue, thence west along the south line of Garfield Avenue 400 ft. to the east line of Springfield Blvd, thence south along the east line of Springfield Blvd 160 ft. to a point 5 ft. north of the northwest corner of Lot 7 Block 8 Walkers Addition, thence east to the point of beginning.

## DEDICATION

I, William Beggs, County Clerk of Wyandotte County, Kansas, hereby certify that I have had the above tracts of land surveyed and have grouped and platted them as indicated on the within plat, and I hereby dedicate said subdivision for Assessment purposes and designate said group of lands as "Annex to Block 8 Walkers Addition". I further certify that I have had said tracts surveyed and platted because of the failure of the owners thereof to make and file a plat as required by law, and that I have caused the same to be made and platted pursuant to the provisions of Chapter 247 of the laws of 1909. I further certify that the Streets indicated on this plat are in actual use by the public for public travel.

Witness my hand and seal of my office affixed this 3<sup>d</sup> day of January A.D. 1933

*William Beggs*  
County Clerk

STATE OF KANSAS }  
COUNTY OF WYANDOTTE } S.S.

Be it remembered that on this 3<sup>d</sup> day of January A.D. 1933 before me, a Notary Public in and for the above named County and State, came William Beggs, County Clerk of said County, who is personally known to me to be the same person who executed the foregoing instrument and duly acknowledged the execution of the same.

In Witness Whereof I have hereunto subscribed my name and affixed my Notarial Seal the day and year last above written.

My Commission Expires - Sept 10 - 1933

*Joseph B. [Signature]*  
Notary Public