

Approved by
 City Planning Comm.
 Nov. 24 1922 *Robert*
Secy

Approved
 R. L. McAlpine
 City Engineer

- CORRECTED PLAT -
 OF THE SUBDIVISION OF
- A PART OF LOT 1 -

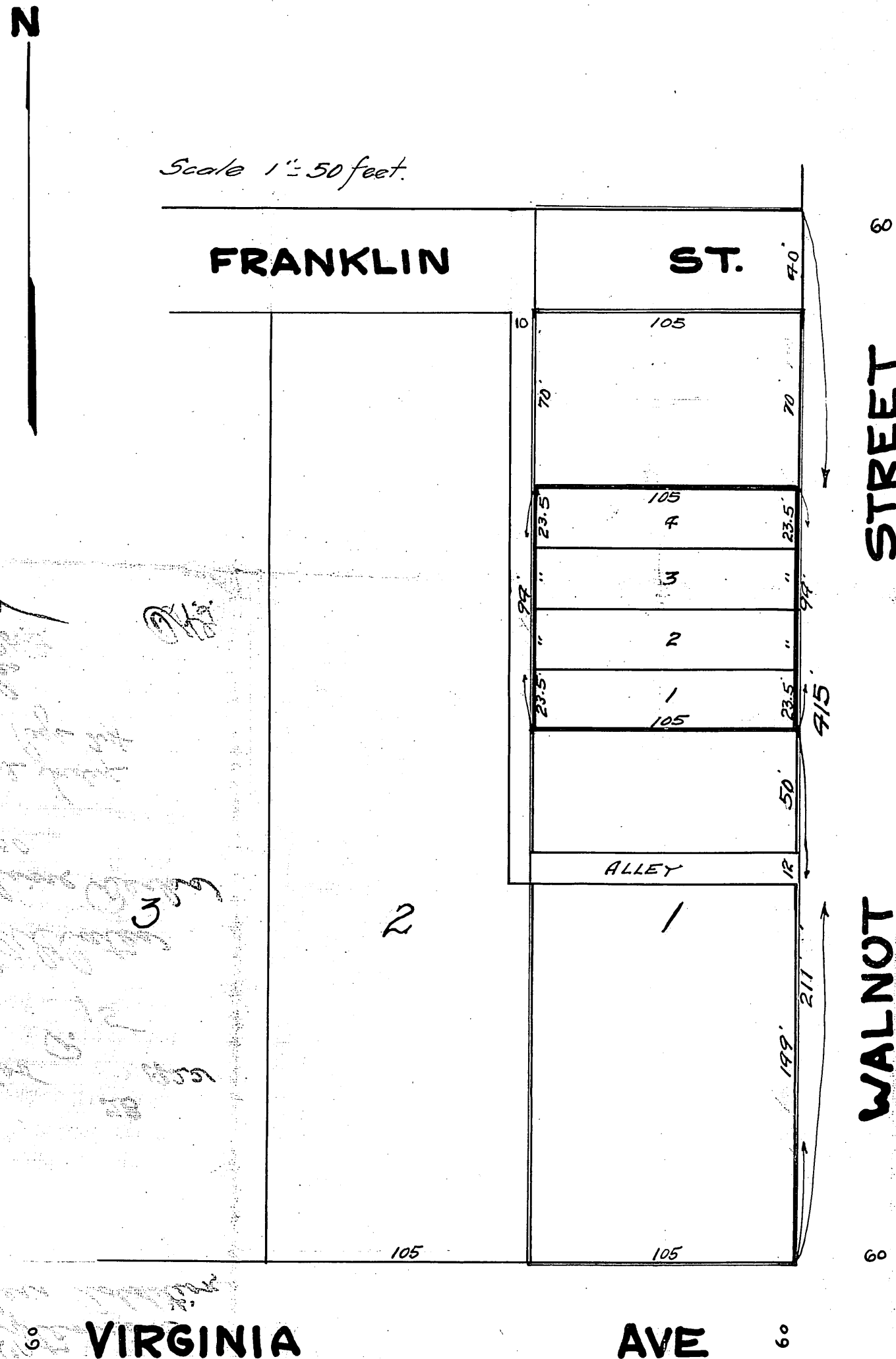
State of Kansas
 County of Wyandotte
 I, Howard Payne City Clerk
 Kans. hereby certify that the
 approved by the Board of Com.
 In witness whereof I have hereunto set my hand
 and affixed the official seal of the City
Howard Payne
 City Clerk

Corrected Plat of the
 Subdivision of a part of
 Lot 1. Walkers Extension
 of Walkers Addition
 Book 15
 Page 28

WALKERS EXTENSION OF WALKERS ADDITION

Surveyed by P. H. Williamson
 County Surveyor.

Scale 1" = 50 feet.



This Subdivision of Land shall be known as "SUBDIVISION OF A PART OF LOT 1 WALKERS EXTENSION OF WALKERS ADDITION."

This plat of SUBDIVISION OF A PART OF LOT 1 WALKERS EXTENSION OF WALKERS ADDITION contains lands in Wyandotte County, Kansas described as follows - Commencing at a point Two Hundred & Eleven (211) feet North of the S.E. Corner of Lot 1 Walkers Extension of Walkers Addition, thence West 105 feet, thence North 94 feet, thence East 105 feet, thence South 94 feet to point of beginning.

The lands reserved for Sale are designated by Numbers as Lots in SUBDIVISION OF A PART OF LOT 1 WALKERS EXTENSION OF WALKERS ADDITION

This plat is made for the purpose of correcting the record to conform to the measurements on the ground.

In "WITNESS WHEREOF" we the undersigned owners of said Subdivision have hereunto set our hands and seals this 12th day of November A.D. 1922.

Frederick Fauteck seal.
Elizabeth Fauteck seal.

State of Kansas } ss.
 County of Wyandotte }

Be it Remembered that on this 12th day of November A.D. 1922 before me the undersigned a Notary Public in and for said County and State aforesaid came Frederick Fauteck and Elizabeth Fauteck who are personally known to me to be the same persons who executed the foregoing instrument and duly acknowledged the execution of the same

In witness whereof, I have hereunto subscribed my name and affixed my Notarial seal on the day and year last above written.

Leslie J. Boonetz
 Notary Public.

My Commission Expires November 21 1923

[Faint handwritten notes and signatures in the bottom left corner of the plat.]