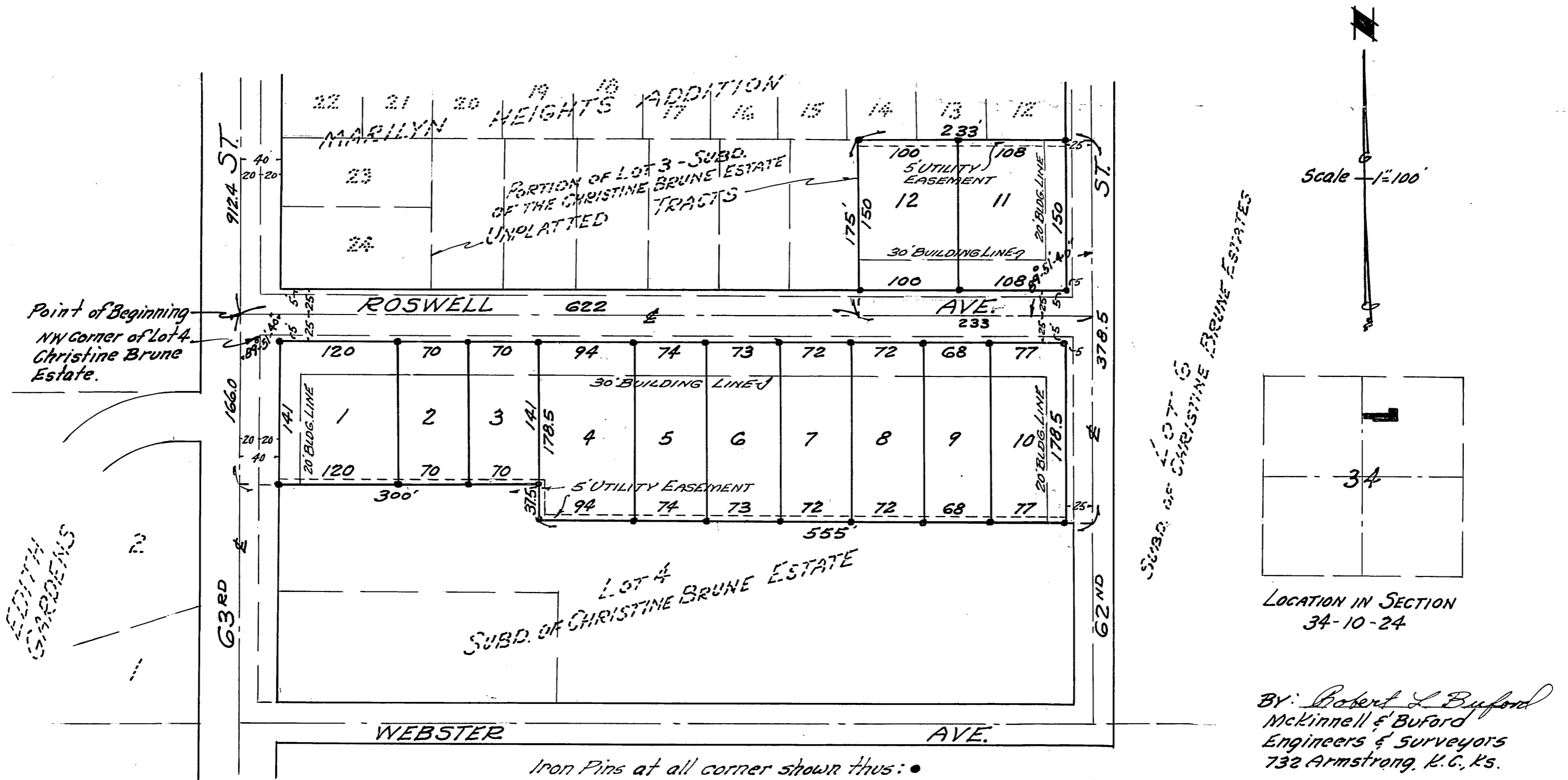


WELCH ADDITION

A Subdivision of a portion of Lots 3 and 4, Subdivision of the Christine Brune Estate a subdivision in Wyandotte County, Kansas.

Description

All that part of Lots 3 and 4, Subdivision of the Christine Brune Estate according to the recorded plat thereof being located in the NE 1/4 of Section 34, Township 10, Range 24, Wyandotte County, Kansas, being more particularly described as follows: Beginning at a point on the West line of said NE 1/4 of said Section 34 which is 912.4 feet South of the Northwest corner of said NE 1/4 of said Section 34, said point being 20.0 feet West of and 20.0 feet North of the Northwest corner of said Lot 4, Subdivision of the Christine Brune Estate; thence East along the center line of Roswell Avenue (formerly Spring Avenue) said center line being parallel with the North line of said NE 1/4 of Section 34, 622.0 feet; thence North parallel with the West line of the NE 1/4 of said Section 34, 175.0 feet; thence East parallel with the center line of said Roswell Avenue 233.0 feet to the center line of 62nd Street (formerly Christine Street); thence South along the center line of said 62nd Street 378.5 feet; thence West parallel with and 203.8 feet South of the center line of said Roswell Avenue, 555.0 feet; thence North parallel with the West line of said NE 1/4 of Section 34, 37.5 feet; thence West parallel with the center line of said Roswell Avenue, 300.0 feet to the West line of said NE 1/4 of Section 34; thence North along the West line of said NE 1/4 of Section 34, 166.0 feet to the point of beginning.



Dedication

The lands intended for sale are described by and as lots, the dimensions of which are shown hereon, that portion reserved for public use as roads, the extent and direction of which are shown on this plat, and Utility Easements as shown are hereby dedicated to the public use forever.

IN TESTIMONY WHEREOF: We the undersigned owners of the herewith described property have hereunto set our hand and seal this 29th day of March 1957.

Walter Welch

Belle Welch

STATE OF KANSAS }
COUNTY OF WYANDOTTE } S.S.

Be it remembered that on this 29th day of March 1957, before me a Notary Public in and for the County and State aforesaid came Walter Welch and Belle Welch, his wife, who are personally known to me to be the same persons who executed the foregoing instrument of writing and duly acknowledge the execution of the same to be their own free act and deed.

IN TESTIMONY WHEREOF, I have hereunto set my hand and affixed my Notarial Seal the day and year last above written.

MY COMMISSION EXPIRES May 18, 1958

NOTARY PUBLIC

APPROVED BY WYANDOTTE COUNTY PLANNING BOARD. DATE - Mar 25, 1957

Joe Jenkins ATTEST. L.B. Kuhlenschmidt
CHAIRMAN SECRETARY

APPROVED BY WYANDOTTE COUNTY COMMISSIONERS. DATE - June 6, 1957

County Clerk ATTEST. R.D. Jensen
CHAIRMAN COUNTY CLERK

APPROVED BY WYANDOTTE COUNTY ENGINEER. DATE - June 6, 1957

Howard C. Antim
COUNTY ENGINEER

State of Kansas, Wyandotte County, ss:
Received for Record on the 6 day of JUNE A.D. 1957
at 1:54.6 o'clock P.M. and duly recorded in Record Book 27 at page 8

L.C. MADDOX
Register of Deeds
Stanley M. ...
Deputy
Fee, \$ 5.85

ORIGINAL COMPARED WITH RECORD NUMERICALS GRANTED V.A. GRANT

APPROVED BY BOARD OF CITY COMMISSIONERS OF KANSAS CITY, KANSAS. DATE - May 14, 1957

Paul ... ATTEST. ...
MAYOR CITY CLERK

APPROVED BY THE CITY ENGINEER OF KANSAS CITY, KANSAS. DATE - May 14, 1957

Fred B. ...
CITY ENGINEER

APPROVED BY THE KANSAS CITY, KANSAS PLANNING BOARD. DATE - May 13, 1957

Harry G. ... ATTEST. ...
CHAIRMAN SECRETARY