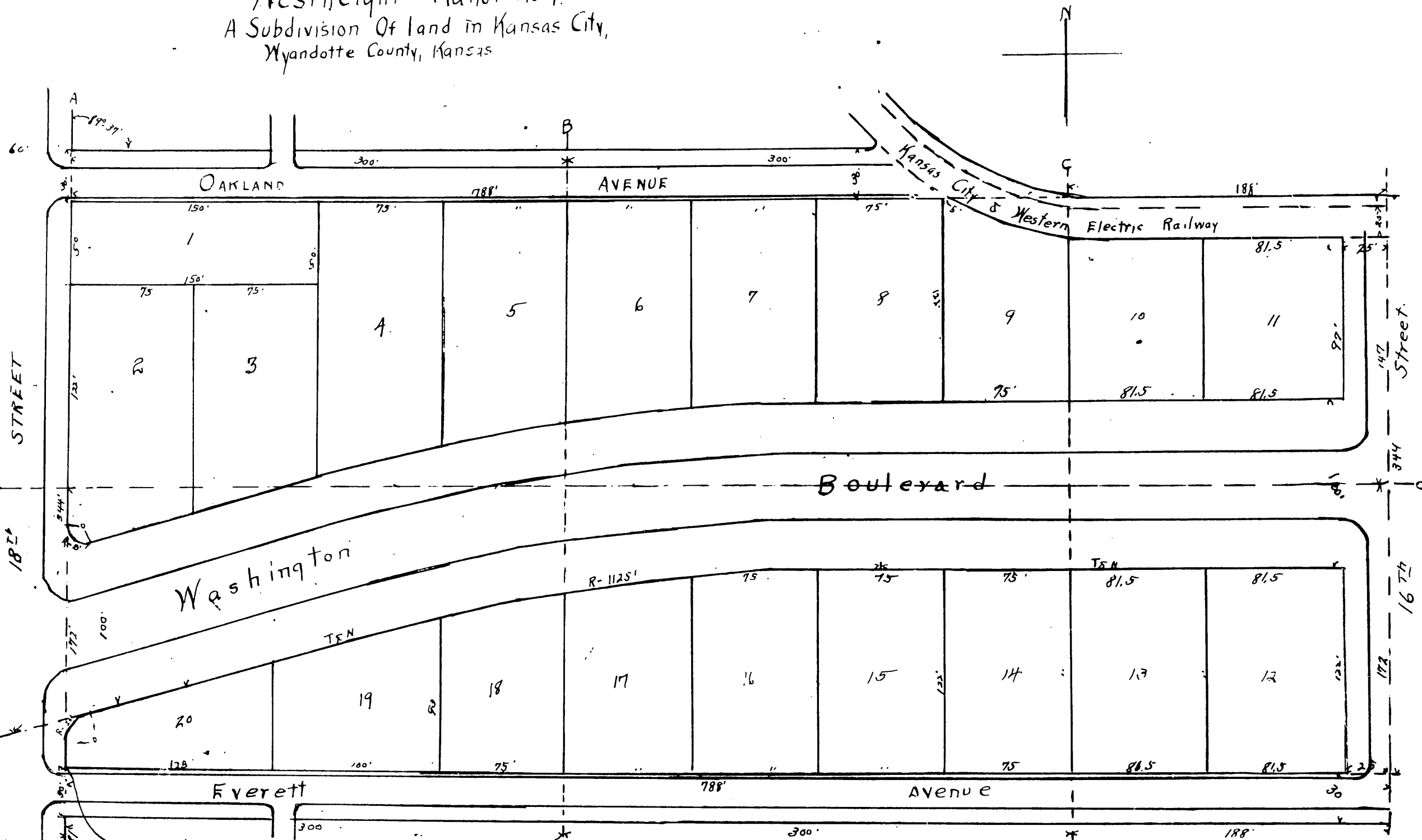


Westheight Manor No 4.  
A Subdivision Of land in Kansas City,  
Wyandotte County, Kansas



168519  
Filed for record  
this 26th day of  
August 1916  
at 3:05 o'clock PM  
William Depps  
Register of Deeds  
By E. Louise Chapman  
Deputy,

Westheight Manor No 4  
An addition to Kansas City, Wyandotte County, Kansas  
This is a subdivision of land in the Southwest quarter of  
Section 4 Township 11-Range 25 Wyandotte County Kansas, described  
as follows  
Beginning at a point 981 feet North of the corner of Sections 4-5-  
7-and 8 Township 11-Range 25, thence North 344 feet thence east  
788 feet, thence South 344 feet, thence West 788 feet to place of  
beginning.  
The undersigned proprietors of the above described tract of land  
have caused the same to be subdivided in the manner represented  
on the accompanying plat which subdivision shall hereafter be  
known as WESTHEIGHT MANOR No 4.  
The lands reserved for sale are indicated therein by figures  
as lots. The streets and parts thereof within the described tract  
of land are hereby dedicated to public use as such  
Approved by the Board of Commissioners of the City of Kansas City  
Kansas on the 24th day of August 24-1916. Howard Payne City Clerk

In testimony whereof H.L. Kerr and Nettie Kerr his wife have  
hereunto subscribed their names  
H.L. Kerr.  
Nettie Kerr  
State of Kansas }  
County of Wyandotte } ss.  
On this 23rd day of August 1916 before me personally  
appeared H.L. Kerr and Nettie Kerr his wife to me known  
to be the persons described in and who executed the same  
as their free act and deed  
In testimony whereof I have hereunto set my hand  
and affixed my Notarial seal on the day and year above written  
F.M. Carpenter  
Notary Public in and for  
Wyandotte County Kansas  
My Commission expires June 27-1920.