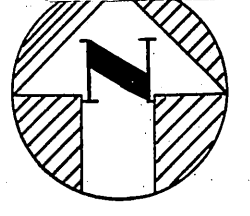


650722

Book 29
Page 25

585 *R. M. Miller*

REPLAT OF PART OF WHITE OAKS SUBDIVISION



0 50' 100'
1" = 100'

CONSENT CONTAINS WITH RECORD
NUMERICALS
GRANTEES

DESCRIPTION

From the S.E. Corner N.E. 4 Sec. 31-10-24 Wyandotte County, Kansas; Proceed S-89-38-40-E along the E. & W. 1/2 Sec. 32-10-24, 206.97 feet to the point of Beginning; thence S-89-38-40-E along the E. & W. 1/2 Sec. 32-10-24, 341.95 feet; thence S-0-25-20-W, (Deed 1051.0 feet) Meas. 1049.79 feet; thence (N-63 1/2° E, 123.0 feet-Deed) Meas. N-63-56-25-E, 127.38 feet to a point which is 655.0 feet W. of the E. line W 2 SW 4 Sec. 32-10-24; thence S-0-25-20-W and parallel with the E. line W 2 SW 4 Sec. 32-10-24, (Deed 825.0 feet) Meas. 825.87 feet; thence N-84-19-40-W, 324.91 feet; thence N-0-25-20-E, 425.0 feet; thence N-7-24-0-W, 449.27 feet; thence N-3-24-0-W, 813.34 feet; thence N-0-21-20-E, 107.82 feet to the Point of Beginning.

RESTRICTIONS

Restrictions which apply to White Oaks Subdivision found in Book 1740 on Pages 609, 610, and 611 in the Register of Deeds Office, Wyandotte County, Kansas, shall apply to this Replat.

DEDICATION

The lands intended for sale are described by and as lots with restrictions in "White Oaks Subdivision", the dimensions of which are shown on this replat, that portion reserved for public use as roads, the extent and direction of which are shown hereon, Utility Easements and Drainage Easements as indicated are hereby dedicated to the public use forever. Description of Part Replatted:

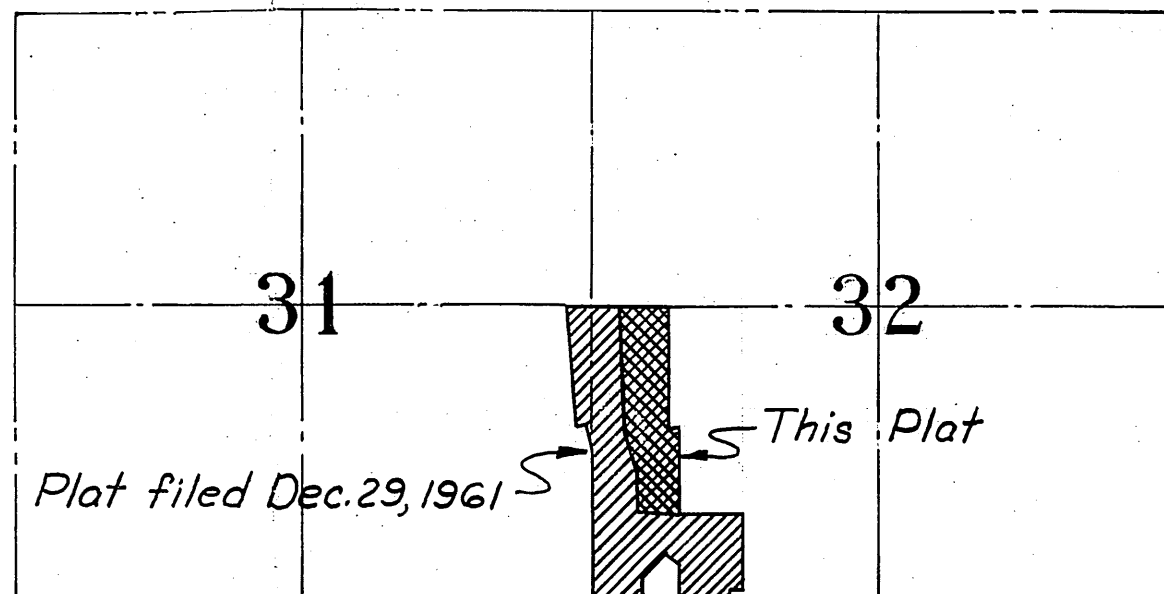
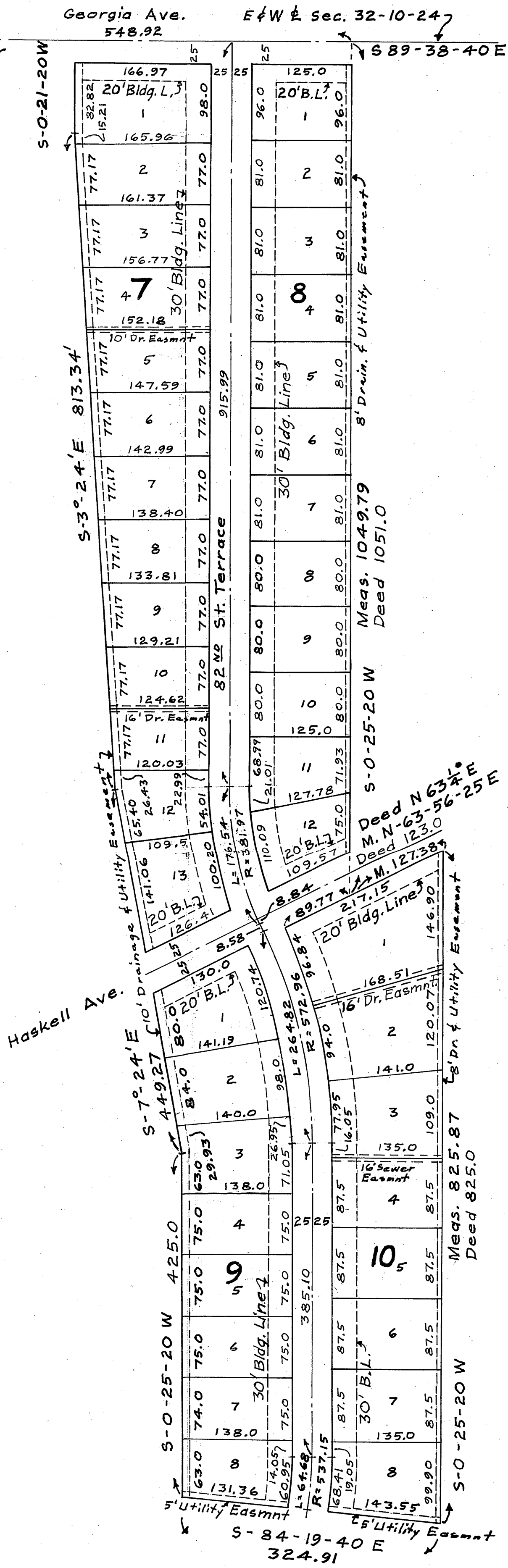
- Lots 1 thru 13 inclusive Block 7
- Lots 1 thru 12 inclusive Block 8
- Lots 1 thru 8 inclusive Block 9
- Lots 1 thru 8 inclusive Block 10

IN TESTIMONY WHEREOF, We the undersigned owners of the above described property, have hereunto set our hands, this 17 day of December 1962

Donald R. McCully Investment Company Incorporated
Donald R. McCully President
Mildred O. McCully Secretary

STATE OF KANSAS } ss On this 17 day of December 1962 before
COUNTY of WYANDOTTE } me personally appeared Donald R. McCully, President
and Mildred O. McCully, Secretary of Donald R. McCully Investment Company Incorporated
to me known to be the persons described in and who executed the
foregoing instrument of writing, and duly acknowledge the execution
of the same to be their own free acts and deed.
IN WITNESS WHEREOF: I have hereunto set my hand and affixed my
notarial seal the day and year last above written.

W. M. Alstrom
Notary Public within and for said County and State.
My Commission expires 13 June 1964



This partial replat prepared by:
Shaad and Viets Consulting Engineers
Mission, Kansas

Gerald S. King

APPROVED BY:

Wyandotte County Engineer Date Dec. 20, 1962
Jim R. Storey

Wyandotte County Planning Board Date Dec. 17, 1962.
Jim R. Storey *A. B. Kucharski*

Wyandotte County Commissioners Date
Jim R. Storey *Mildred O. McCully*