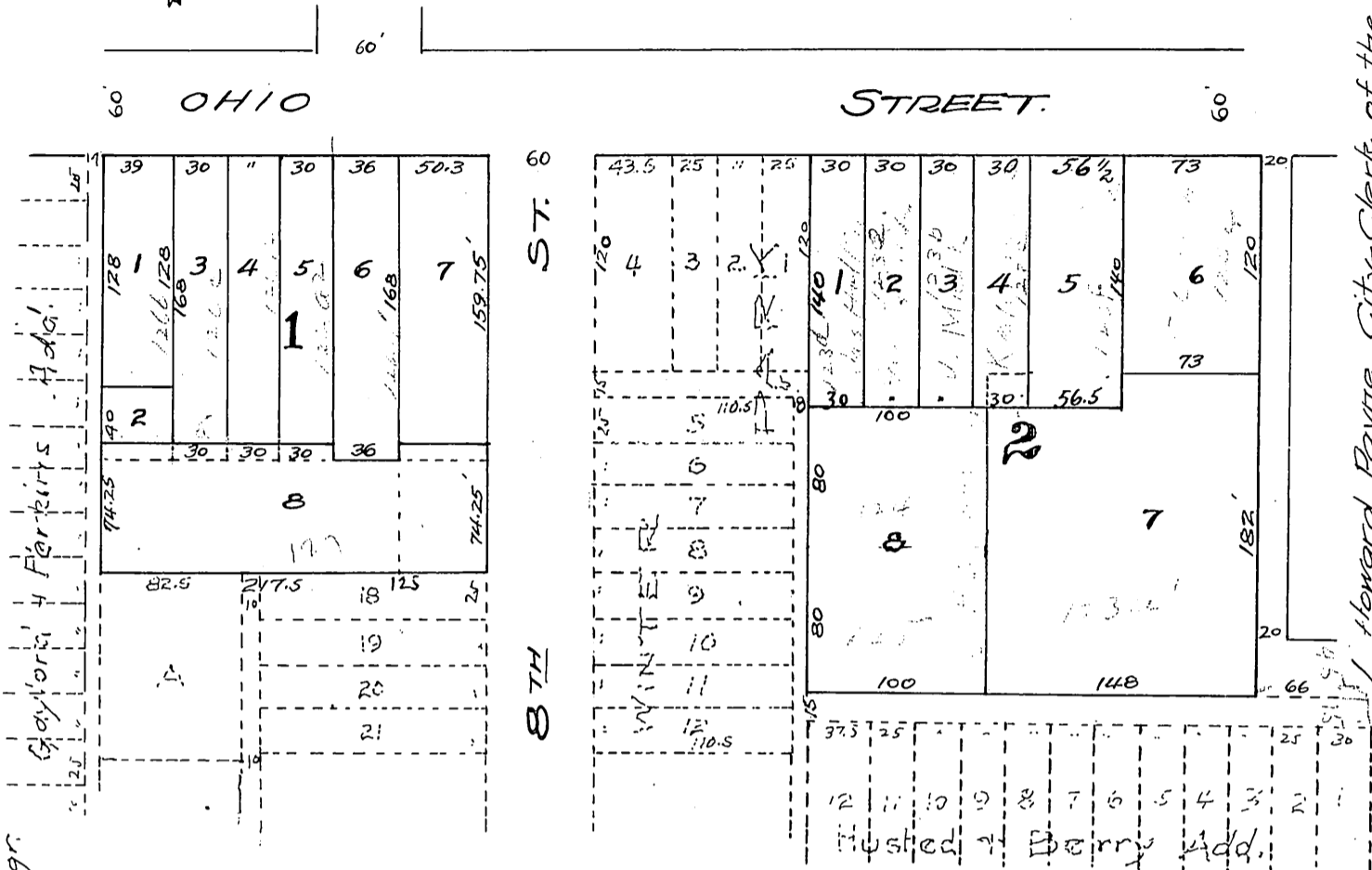


# Plat of Winter Park A.

Platted by  
**P. A. Williamson**  
County Surveyor.



City of Kansas City, Kansas, hereby Certify that the foregoing plat of "Winter Park Annex" was approved by the board of City Commissioners this 15 day of Nov. A.D. 1922. Howard Payne City Clerk of the City of Kansas City, Kansas.

### DESCRIPTION

This plat of "WINTER PARK ANNEX" covers land in Wyandotte County, Kansas described as follows—

Beginning at a pt. 690 feet South and 330 feet East of the N.W. corner of the S.W.  $\frac{1}{4}$  of Section 10-11-25; thence South 234 feet; thence East 217.5 feet; thence North 234 feet; thence West 215.3 feet to pt. of beginning. Embracing tracts heretofore designated as Numbers 126a, 126a', 126a'', 126b, 126c, 126 and 128, of Book

Also - Beginning at a pt. 690 feet South and 726 feet East of the N.W. corner of the S.W.  $\frac{1}{4}$  of Section 10-11-25; thence South 302 feet; thence East 248 feet; thence North 302 feet; thence West 248 feet to the pt. of beginning. Embracing tracts heretofore designated as Numbers 123a, 123a', 123b, 123c, 123d, 123e, 124 and 125, of Book

### DEDICATION

I Wm. Beggs - County Clerk of Wyandotte County, Kansas, hereby Certify that I have had the above tracts of land surveyed and have grouped and platted them as indicated on the within plat, and I hereby dedicate said subdivision for Assessment purposes, and designate said group of lands as "WINTER PARK ANNEX."

I further certify that I have had said tracts of land surveyed and platted because of the failure of the owners thereof to make and file a plat as required by law, and that I have caused the same to be made and platted pursuant to the provisions of Chapter 247, of the Laws of 1909. I further Certify that the Streets, Avenues and Alleys indicated on this plat are in actual use by the public for public travel.

Witness my hand and seal of my office affixed this 5 day of April 1922

*William Beggs*  
County Clerk

State of Kansas }  
County of Wyandotte } ss

Be it remembered that on this 5<sup>th</sup> day of April AD 1922 before me the undersigned a Notary Public in and for the above named County and State, came William Beggs, County Clerk of said County, who is personally known to me to be the same person who executed the foregoing Instrument and duly acknowledged the execution of the same.

In Witness Whereof I have hereunto subscribed my name and affixed my Notarial Seal the day and year last above written.

My Commission Expires March 22<sup>nd</sup> 1926.

*W. F. Mathis*  
NOTARY PUBLIC.

Approved by City Engineer  
*R. L. Mc Alpine*  
City Engr.  
  
Approved by City Planning Commission  
*William Roberts*  
Secretary