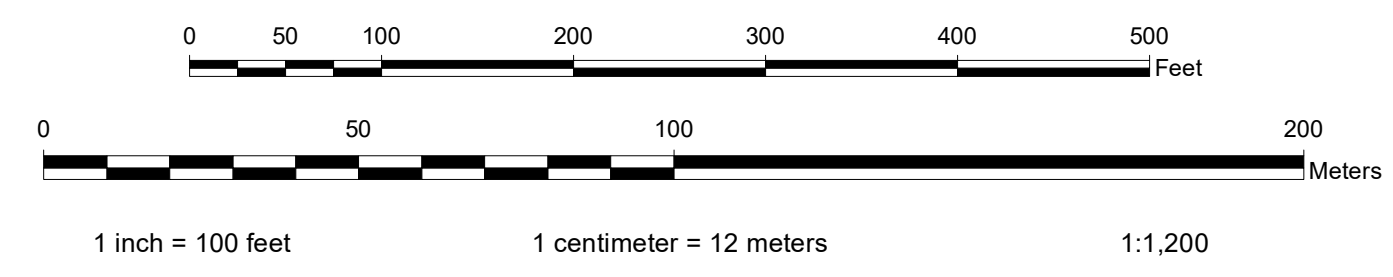
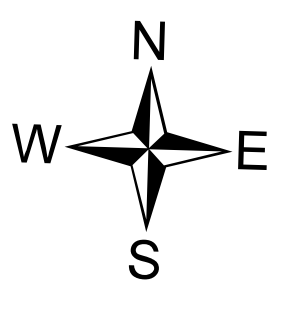


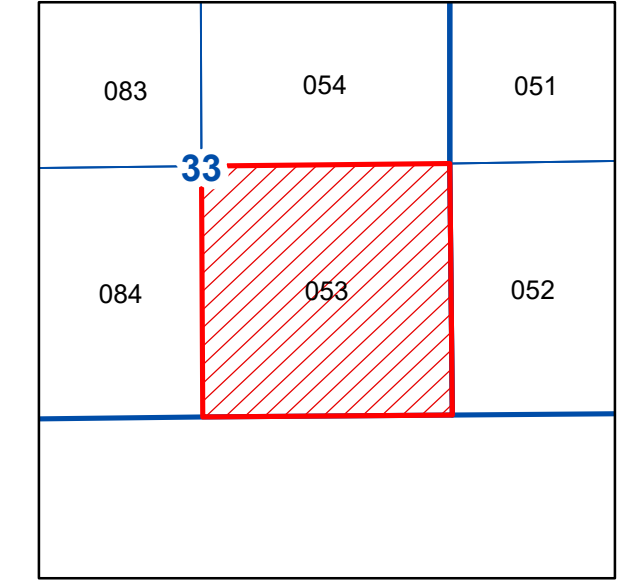
**DISCLAIMER OF WARRANTY AND ACCURACY**  
 Unified Government of Wyandotte Co., Kansas City, KS (UG) makes no representations or warranties about this map or its contents, including, without limitation, accuracy, completeness, or fitness for any purpose. Users of this map document do so at their own risk. UG will not be liable to any such user for any loss or damage whatsoever.

This QUARTER SECTION MAP of ownership parcels is maintained for administrative purposes by the Unified Government of Wyandotte County, Kansas City, Kansas. Geospatial Services Office of the Department of Technical Services. Parcels are intended to show as accurately as possible the recorded ownership parcels but are not intended to be construed as survey accurate in any manner. The topographic and bathymetric features are for reference only with respect to parcel boundaries. Parcel information is current as of publication date below; planimetric and topographic features are not maintained.

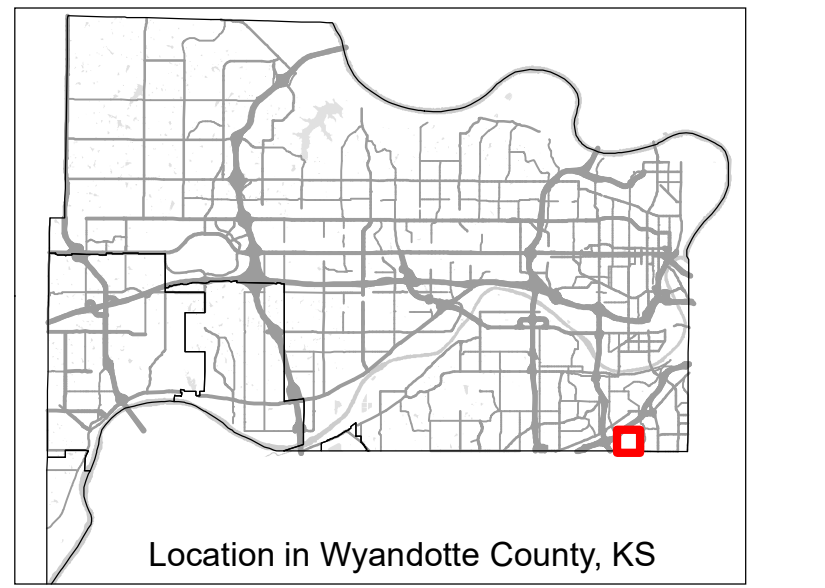
Publication Date: 12/15/2021  
 Coordinate System: NAD 1983 StatePlane Kansas North FIPS 1501 Feet Datum: North American 1983 Units: Foot US  
 2012 LIDAR-Derived Contour Interval: 2 Feet



**Quarter Section Parcel Map**  
 Wyandotte County, Kansas



**MAP NUMBER 053**  
 SE1/4 SEC33 T11S R25E



Location in Wyandotte County, KS