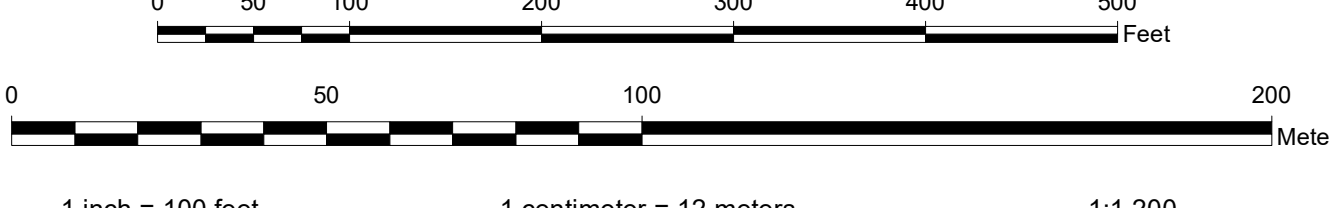
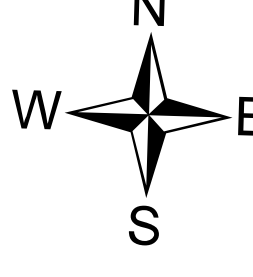


DISCLAIMER OF WARRANTY AND ACCURACY
 Unified Government of Wyandotte County, Kansas, KS (UG) makes no representations or warranties about this map or its contents, including, without limitation, accuracy, completeness, or fitness for any purpose. Users of this map document do so at their own risk. UG will not be liable to any such user for any loss or damage whatsoever.

This QUARTER SECTION MAP of ownership parcels is maintained for administrative purposes by the Unified Government of Wyandotte County, Kansas, City, Kansas. Geospatial Services Office of the Department of Technical Services. Parcels are intended to be used as a reference only. The information is not intended to be construed as a survey or other legal document. The boundaries and other information shown are for reference only with respect to parcel boundaries. Public information is shown as of publication date below; planimetric and topographic features are not maintained.

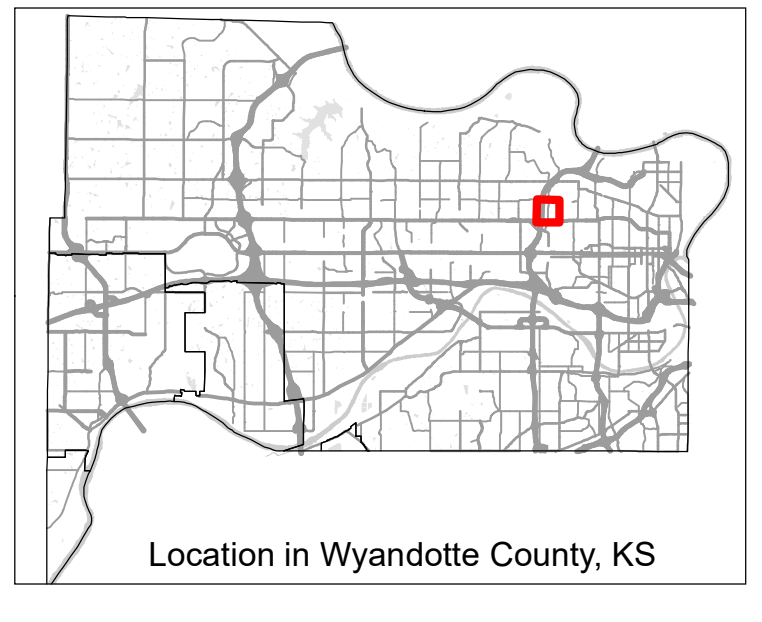
Publication Date: 12/15/2021
 Coordinate System: NAD 1983 StatePlane Kansas North FIPS 1501 Feet
 Datum: North American 1983
 Units: Foot US
 2012 LIDAR-Derived Contour Interval: 2 Feet



Quarter Section Parcel Map
 Wyandotte County, Kansas

141	132	105
142	131	106
143	130	107
144	129	108

MAP NUMBER 131
 SW1/4 SEC31 T10S R25E



Geospatial Services Division, Department of Technical Services of the Unified Government of Wyandotte County, Kansas 710 N. 7th Street, Ste. 200, Kansas City, Kansas 66101 Phone: 913.273.2041 Fax: 913.273.4108 Email: gsd@wyandotte.org