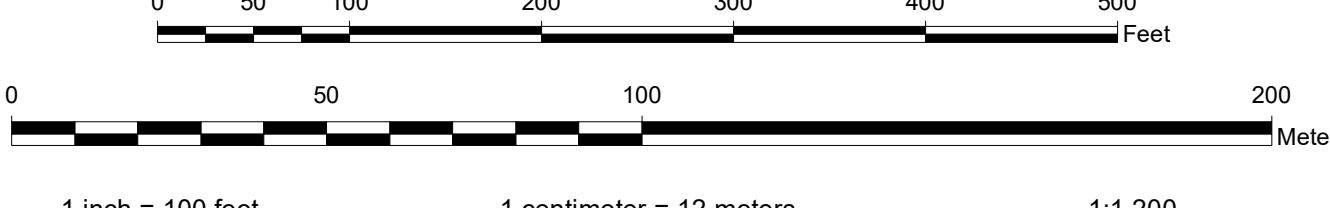
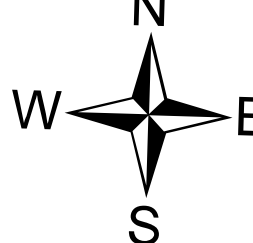




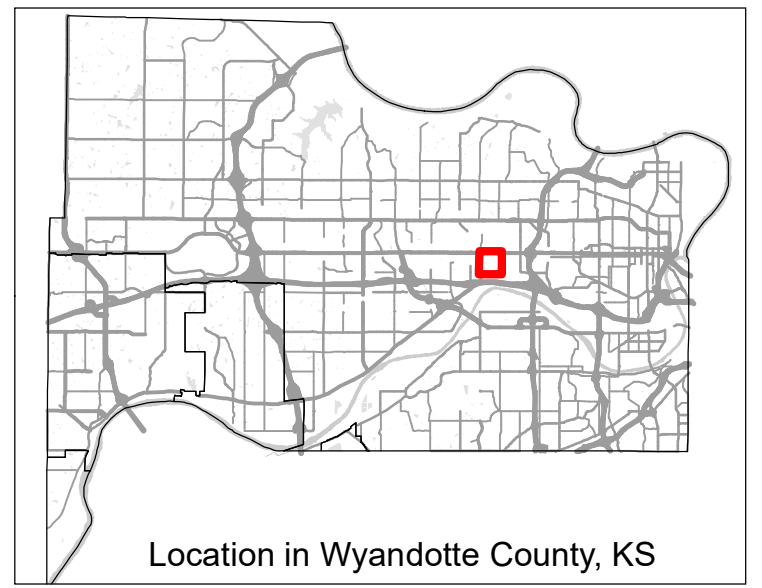
**DISCLAIMER OF WARRANTY AND ACCURACY**  
 Unified Government of Wyandotte Co., Kansas, KS (UG) makes no representations or warranties about this map or its contents, including, without limitation, accuracy, completeness, or fitness for any purpose. Users of this map document do so at their own risk. UG will not be liable to any such user for any loss or damage whatsoever.  
 This QUARTER-SECTION MAP of ownership parcels is maintained for administrative purposes by the Unified Government of Wyandotte County, Kansas City, Kansas. Geospatial Services Office of the Department of Technical Services. Parcels are intended to show as accurately as possible the reference only with respect to parcel boundaries. Public information is current as of publication date below; planimetric and topographic features are not maintained.  
 Publication Date: 12/15/2021  
 Coordinate System: NAD 1983 StatePlane Kansas North FIPS 1501 Feet  
 Datum: North American 1983  
 Units: Foot US  
 2012 LIDAR-Derived Contour Interval: 2 Feet



**Quarter Section Parcel Map**  
 Wyandotte County, Kansas

201	180	165
200	181	164
199	182	163

**MAP NUMBER 181**  
**NW1/4 SEC12 T11S R24E**



Geospatial Services Division, Department of Technical Services of the Unified Government of Wyandotte County/Kansas City, Kansas • 710 N. 7th Street, Ste. 200 • Kansas City, Kansas 66101 • Phone: 913.873.2841 Fax: 913.873.4108 Email: gsd@wyandotte.org