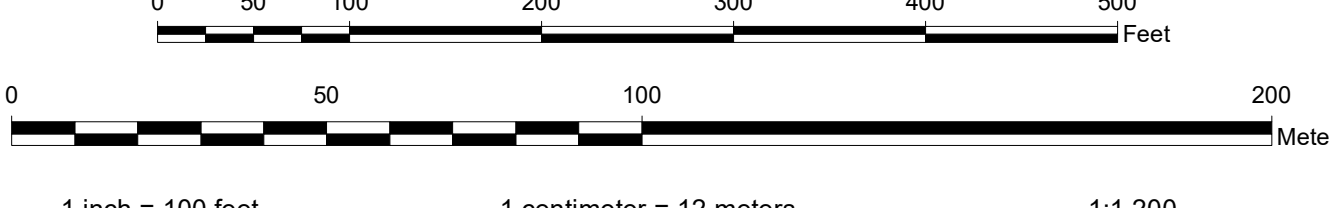
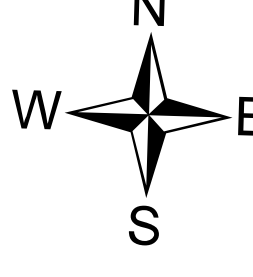


**DISCLAIMER OF WARRANTY AND ACCURACY**  
 Unified Government of Wyandotte Co., Kansas City, KS (UG) makes no representations or warranties about this map or its contents, including, without limitation, accuracy, completeness, or fitness for any purpose. Users of this map document do so at their own risk. UG will not be liable to any third party for any loss or damage whatsoever.

This QUARTER SECTION MAP of ownership parcels is maintained for administrative purposes by the Unified Government of Wyandotte County, Kansas City, Kansas. Geospatial Services Office of the Department of Technical Services. Parcels are intended to show as accurately as possible the relationship of ownership parcels but are not intended to be construed as survey accurate in any manner. The boundaries and other features are for reference only with respect to parcel boundaries. Public information is current as of publication date below; planimetric and topographic features are not maintained.

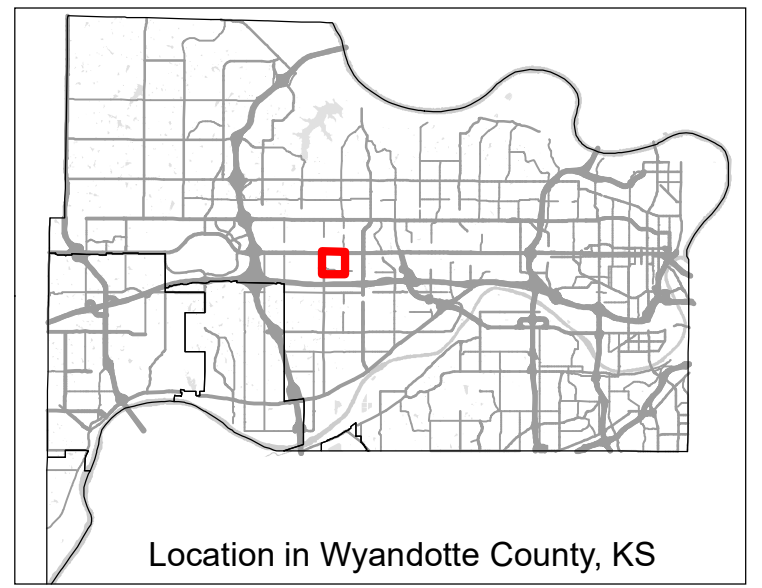
Publication Date: 12/15/2021  
 Coordinate System: NAD 1983 StatePlane Kansas North FIPS 1501 Feet  
 Datum: North American 1983  
 Units: Foot US  
 2012 LIDAR-Derived Contour Interval: 2 Feet



**Quarter Section Parcel Map**  
 Wyandotte County, Kansas

345	324	309
344	325	308
343	326	307

**MAP NUMBER 325**  
**NW1/4 SEC08 T11S R24E**



Location in Wyandotte County, KS

Geospatial Services Division, Department of Technical Services of the Unified Government of Wyandotte County, Kansas City, Kansas 710 N. 7th Street, Ste. 200, Kansas City, Kansas 66101 | Phone: 913.233.2841 Fax: 913.233.4108 Email: gsd@wyandotte.org