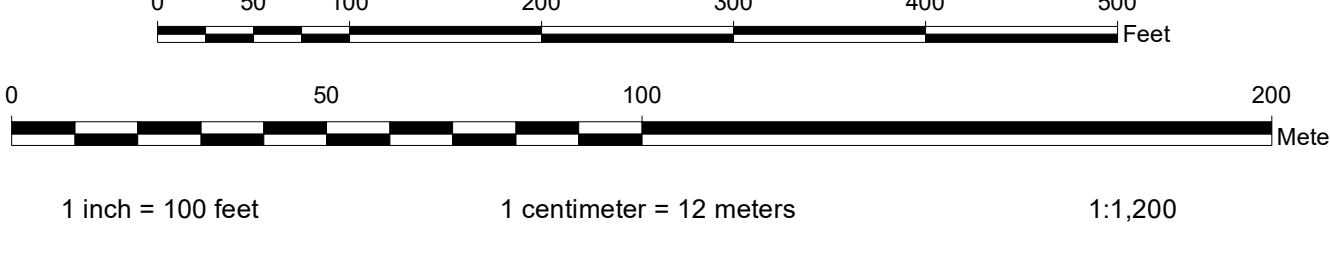
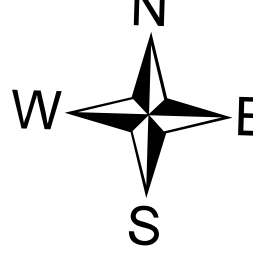


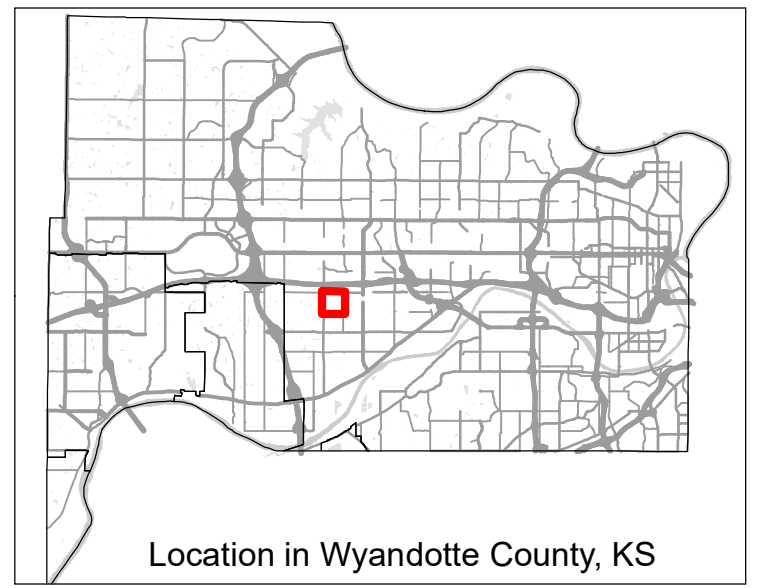
**DISCLAIMER OF WARRANTY AND ACCURACY**  
 Unified Government of Wyandotte Co., Kansas, KS (UG) makes no representations or warranties about this map or its contents, including, without limitation, accuracy, completeness, or fitness for any purpose. Users of this map document do so at their own risk. UG will not be liable to any such user for any loss or damage whatsoever.  
 This QUARTER SECTION MAP of ownership parcels is maintained for administrative purposes by the Unified Government of Wyandotte County, Kansas. The data is intended to be used as a reference only. The Department of Technical Services, Unified Government of Wyandotte County, Kansas, does not warrant the accuracy of the information shown on this map. The boundaries and other information are for reference only with respect to parcel boundaries. Parcel information is current as of publication date below. Parametric and topographic features are not maintained.  
 Publication Date: 12/15/2021  
 Coordinate System: NAD 1983 StatePlane Kansas North FIPS 1501 Feet  
 Datum: North American 1983  
 Units: Foot US  
 2012 LIDAR-Derived Contour Interval: 2 Feet



**Quarter Section Parcel Map**  
 Wyandotte County, Kansas

343	326	307
342	327	306
341	328	305

**MAP NUMBER 327**  
**NW1/4 SEC17 T11S R24E**



Geospatial Services Division, Department of Technical Services of the Unified Government of Wyandotte County, Kansas • 710 N. 7th Street, Ste. 200 • Kansas City, Kansas 66101 • Phone: (913) 233-2841 Fax: (913) 233-4108 Email: gsd@wyandotte.org