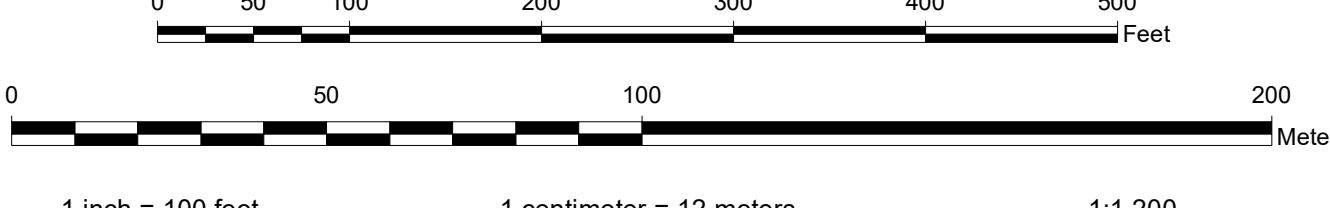
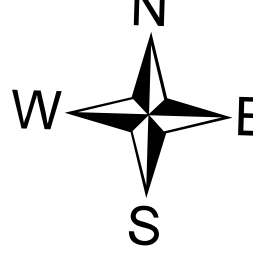


DISCLAIMER OF WARRANTY AND ACCURACY
 Unified Government of Wyandotte Co., Kansas, KS (UG) makes no representations or warranties about this map or its contents, including, without limitation, accuracy, completeness, or fitness for any purpose. Users of this map document do so at their own risk. UG will not be liable to any such user for any loss or damage whatsoever.

This QUARTER SECTION MAP of ownership parcels is maintained for administrative purposes by the Unified Government of Wyandotte County, Kansas City, Kansas. Geospatial Services Office of the Department of Technical Services. Parcels are intended to show as accurately as possible the relationship of neighboring parcels but are not intended to be construed as survey accurate in any manner. The topographic and planimetric features are for reference only with respect to parcel boundaries. Planimetric information is current as of publication date below; planimetric and topographic features are not maintained.

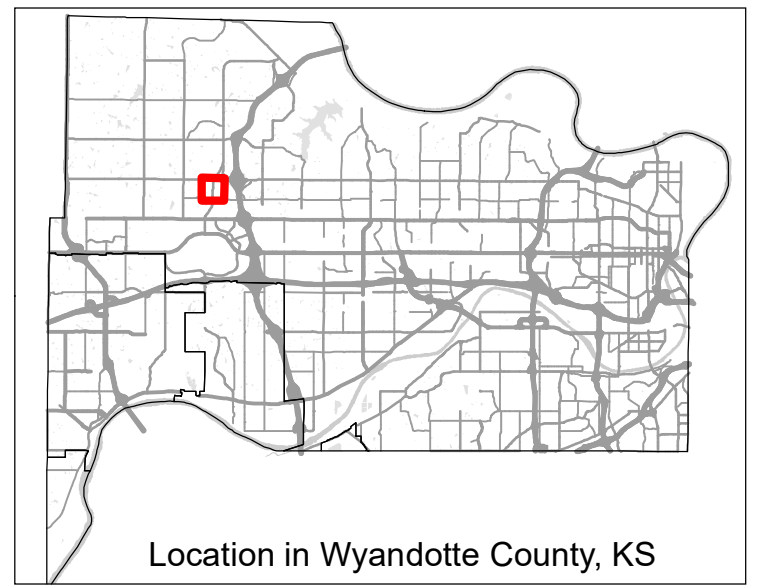
Publication Date: 12/15/2021
 Coordinate System: NAD 1983 StatePlane Kansas North FIPS 1501 Feet
 Datum: North American 1983
 Units: Foot US
 2012 LIDAR-Derived Contour Interval: 2 Feet



Quarter Section Parcel Map
 Wyandotte County, Kansas

495	469	454
494	470	453
493	471	452

MAP NUMBER 470
NE1/4 SEC34 T10S R23E



Geospatial Services Division, Department of Technical Services of the Unified Government of Wyandotte County, Kansas 710 N. 7th Street, Ste. 200, Kansas City, Kansas 66101 Phone: 913.873.2041 Fax: 913.873.4108 Email: gsd@wyandotte.org